

COPYRIGHT © 2022
TAYLOR and FRANCIS GROUP,
LONDON, UK

 **CRC Press**
Taylor & Francis Group

ISBN 978-1-032-13665-3

A BALKEMA BOOK

CRC PRESS / BALKEMA - PROCEEDINGS AND MONOGRAPHS IN ENGINEERING, WATER AND EARTH SCIENCES
WWW.CRCPRESS.COM, WWW.ROUTLEDGE.COM



Editors:
J. Amdahl
C. Guedes Soares

Developments in the Analysis and Design of Marine Structures

[help](#)

[open](#)

Help menu

Table of contents

This link will connect to the list of all articles on the CD ROM.

Search

The Search command allows you to perform a search in PDF documents. You can search for a single word or phrase, or you can expand your search query by using wild-card characters and operators. You can use the search options to further refine your search. If document and data information are provided for the documents you are searching, you can use that information to narrow your search.

For general help on Adobe Acrobat press F1

For more detailed help information see "[Search Help](#)"

Shortcut Keys

Page Up

Page Down

Ctrl + Home

Ctrl + End

Alt + Left Arrow (←)

Alt + Right Arrow (→)

Ctrl ++

Ctrl +-

Ctrl + P

Ctrl + F

Go to Previous Page

Go to Next Page

Go to First Page

Go to Last Page

Go Back to Previous View

Go Forward to Next View

Zoom In

Zoom Out

Print

Search

Author Index

A

Acanfora, M.
Adhikari, S.
Alsos, H.
Amdahl, J.
Andric, J.
Arora, V.

B

Baek, N.K.
Barbato, A.
Bekker, A.
Benson, S.
Berntsson, K.
Berstad, A.J.
Bertagna, S.
Bhardwaj, U.
Bicak, M.
Bilalis, E.P.
Bleoju, A.
Boote, D.
Braidotti, L.

C

Cai, W.
Cao, A.
Cebada, A.
Cerik, B.C.
Chatzinas, P.S.

Chen, P.

Chiritoiu, R.
Cho, S.R.
Choung, J.
Claus, R.
Coppejans, O.J.
Coppola, T.
Corigliano, P.
Crupi, V.

D

Dessi, D.
Dmitrasinovic, A.
Dorival, O.
Dow, R.S.
Dyrkolbotn, S.M.

E

Echeverry, S.

F

Fanourgakis, S.
Fasano, E.
Fathurahkman, M.
Fujikubo, M.

G

Gaggero, T.
Gaiotti, M.
Garbatov, Y.

Georgiadis, D.G.

Gudmestad, O.T.
Guedes Soares, C.
Guo, K.

H

Hernández-Garrastacho, Z.A.
Hirdaris, S.
Hosseinzadeh, S.
Hu, Z.
Hu, ZQ.
Hulsbosch Dam, C.E.C.
Hydar, V.

I

Iijima, K.
Ivaldi, L.

J

Jalasto, T.
Jang, B.S.
Jang, Y.S.
Jiang, L.
Jin, Y.L.
Juswan.

K

Katalinić, M.
Kefal, A.
Kim, D.K.

Kim, J.S.

Kim, S.J.
Körgesaar, M.
Kuznecovs, A.

L

Ladeira, Í.
Larsen, M.L.
Le Sourne, H.
Lee, D.Y.
Lehto, P.
Li, S.
Li, Z.
Liu, D.
Liu, K.
Liu, Z.
Liu, ZH.
López, M.
Lu, Y.

M

Magoga, T.
Mannacio, F.
Marchese, S.S.
Marchese, S.S.
Marinò, A.
Márquez, L.
Matthaiou, A.
Meyer, C.J.

Mikulić, A.

Mitolo, S.
Moan, T.
Mocanu, C.I.
Muis Alie, M.Z.

N

Nahshon, K.
Nepal, S.

P

Pal, S.K.
Palomba, G.
Pan, G.
Panagiotopoulos, V.
Papadakis, A.Z.
Papalambrou, G.
Park, S.H.
Parunov, J.
Passacantilli, F.
Pavletić, D.
Pavletic, S.
Pérez Fernández, R.
Petranović, T.
Pferdekamper, K.
Pineau, J.P.
Piric, K.
Pohilca, A.M.
Prasetyo, F.A.

Author Index

Prebeg, P.
Preventas, M.
Prpić-Oršić, J.

R

Rabar, D.
Ramos, N.M.
Rigo, P.
Ringsberg, J.W.
Rizzo, C.M.
Romanoff, J.

S

Sævik, S.
Sagástegui, D.O.
Samuelides, M.S.
Sha, Y.

Sha, Y.Y.
Shah, F.M.
Shen, K.
Shilling, G.
Sieber, L.
Simancas, O.
Smith, M.
Sobey, A.J.
Sohn, J.M.
Sone Oo, Y.P.
Soto, F.
Svensson, G.

T

Tabri, K.
Tabrizi, I.E.
Takami, T.

Tang, W.
Tatsumi, A.
Teixeira, A.P.
Tessler, A.
Toman Fernández, M.
Tsiourva, D.E.
Tsouvalis, N.G.

U

Umunnakwe, C.B.

V

Valčić, M.
van den Boom, S.J.
van den Brink, A.J.W.
van Dijk, T.S.J.
van Lieshout, P.S.

van Zuydam, A.
Venturini, M.
Vergassola, G.
Vredeveltdt, A.W.

W

Wang, J.
Wang, X.G.
Wang, Y.
Wang, Z.
Wen, X.
Werter, N.P.M.
Wesoly, T.

X

Xu, W.

Y

Yildiz, M.
Yu, Z.L.
Yu, ZL.

Z

Zhang, X.
Zhang, Y.
Zhu, L.

Author Index

Amdahl, J.

Experimental and numerical validation of an analytical hydro-plastic model for the prediction of structural damage in extreme water slamming

Residual ultimate strength assessment of collision-damaged steel floating bridge girders

Design against ship collisions in accordance with the new DNV RP C204

Discussions on the ductile fracture prediction of ship structures under impact loads

Ship collision against a 10 MW semi-submersible floating offshore wind turbine

Author Index

Bekker, A.

Numerical investigation of the seakeeping behavior of a polar vessel in head waves

Full-scale fatigue damage investigation of a slamming-prone vessel with unique section modulus characteristics

Benson, S.

Influence of stochastic geometric imperfection on the ultimate strength of stiffened panel in compression
A Timoshenko beam finite element formulation for thin-walled box girder considering inelastic buckling

Author Index

Bilalis, E.P.

Effect of manufacturing parameters on the mechanical properties of filament wound composite materials

Comparison of fiber content measuring methods of Filament Wound CFRPs

Author Index

Chatzinas, P.S.

Effect of manufacturing parameters on the mechanical properties of filament wound composite materials

Comparison of fiber content measuring methods of Filament Wound CFRPs

Author Index

Crupi, V.

On the potential of Robotic Additive Manufacturing platforms for marine applications

Green design of strip-planked Iroko wood for boatbuilding

Environmental impact of light-weight structures in marine applications

Author Index

Dorival, O.

Response of composite plates in air-backed and water-backed conditions subjected to a far-field underwater explosion

On the influence of buoyancy forces, failure strain and friction coefficient on the damage extent of a grounded ship

Gaiotti, M.

Analysis of the underwater explosion shock effects on a typical naval ship foundation structure: Experimental and numerical investigation

Structural surface assessment of ship structures intended for robotic inspection applications

Guedes Soares, C.

Buckling and material failure analyses on composite cylindrical shells subjected to hydrostatic pressure

Local buckling reliability assessment of corroded subsea pipelines under combined loads

Kefal, A.

Real-Time monitoring of crack propagation in fiber-reinforced composite plates using iFEM methodology

Delamination damage identification in composite shell structures based on Inverse Finite Element Method and Refined Zigzag Theory

Author Index

Körgeaar, M.

WeldInp – Method to include welded zones in large numerical ABAQUS FE models

Review of the uncertainties in load and strength modelling in ship collisions

Le Sourne, H.

Response of composite plates in air-backed and water-backed conditions subjected to a far-field underwater explosion

Assessment of the energy balance gap for ship-FOWT collision simulations with LS-DYNA/MCOL

On the influence of buoyancy forces, failure strain and friction coefficient on the damage extent of a grounded ship

Ship collisions events against reinforced concrete offshore structures

Rapid assessment of ship bottom sliding on paraboloid shaped rock

Li, S.

Influence of stochastic geometric imperfection on the ultimate strength of stiffened panel in compression
A Timoshenko beam finite element formulation for thin-walled box girder considering inelastic buckling

Author Index

Liu, K.

Experimental studies of the motion characteristics of bubble close to a flexible structure with attached air bubble

Discussions on the ductile fracture prediction of ship structures under impact loads

Pineau, J.P.

On the influence of buoyancy forces, failure strain and friction coefficient on the damage extent of a grounded ship

Rapid assessment of ship bottom sliding on paraboloid shaped rock

Author Index

Rigo, P.

Assessment of the energy balance gap for ship-FOWT collision simulations with LS-DYNA/MCOL
Ship collisions events against reinforced concrete offshore structures

Ringsberg, J.W.

A 3D ultimate limit state surface for intact and collision-damaged ship hulls

Assessment of VIV fatigue of subsea template jumper by using a time domain model

Fatigue damage analysis of dynamic power cables by laboratory testing and FE analysis

Hull structural response prediction using distortion base modes

Author Index

Rizzo, C.M.

Analysis of the underwater explosion shock effects on a typical naval ship foundation structure: Experimental and numerical investigation

Structural surface assessment of ship structures intended for robotic inspection applications

Sævik, S.

Assessment of VIV fatigue of subsea template jumper by using a time domain model

Fatigue damage analysis of dynamic power cables by laboratory testing and FE analysis

Samuelides, M.S.

Influence of stochastic geometric imperfection on the ultimate strength of stiffened panel in compression

Prediction of the ultimate strength of a stiffened plate through the investigation of a stiffener-plate element: Effect of boundary conditions

Effect of low cycle/high amplitude loads on the moment carrying capacity of a ship's hull

Corrosion detection with computer vision and deep learning

Author Index

Sha, Y.Y.

Residual ultimate strength assessment of collision-damaged steel floating bridge girders

Numerical study of the structural consequences of ship impacts on a floating bridge in a risk analysis perspective

Author Index

Tsouvalis, N.G.

Effect of manufacturing parameters on the mechanical properties of filament wound composite materials

Comparison of fiber content measuring methods of Filament Wound CFRPs

Author Index

van Dijk, T.S.J.

Improving crashworthiness calculations for safe containment of hazardous fuels

A risk based approach for equivalent safety assessment of alternative fuels for green shipping

Vredeveldt, A.W.

Improving crashworthiness calculations for safe containment of hazardous fuels

A risk based approach for equivalent safety assessment of alternative fuels for green shipping

Author Index

Wang, Z.

Discussions on the ductile fracture prediction of ship structures under impact loads

Development of a global corrosion map towards digital twin applications for marine structures

Yu, Z.L.

Residual ultimate strength assessment of collision-damaged steel floating bridge girders

Design against ship collisions in accordance with the new DNV RP C204

Yu, ZL.

Experimental and numerical validation of an analytical hydro-plastic model for the prediction of structural damage in extreme water slamming
Ship collision against a 10 MW semi-submersible floating offshore wind turbine

Author Index

Zhu, L.

Investigation of accumulated plastic damages on ship plates subjected to repeated ice impacts

Dynamic behavior of sandwich beam with metal foam under repeated impacts loadings

Conference Chairman

J. Amdahl, *Norwegian University of Science and Technology, Norway*

Technical Programme Committee

C. Guedes Soares, *IST, University of Lisbon, Portugal (Chairman)*
J. Andrić, *University of Zagreb, Croatia*
E. Begović, *University of Naples - Federico II, Italy*
D. Dessi, *INSEAN, Italy*
L. Domnisoru, *University “Dunarea de Jos” at Galati, Romania*
S. Ehlers, *Hamburg University of Technology, Germany*
Y. Garbatov, *Instituto Superior Técnico, Portugal*
A.M. Horn, *DNVGL, Norway*
Z.Q. Hu, *Newcastle University, UK*
H. Le Sourné, *ICAM, School of Engineering, France*
E. Oterkus, *University of Strathclyde, Glasgow, UK*
J. Parunov, *University of Zagreb, Croatia*
J. Peschmann DNV GL, *Germany*
J. Prpić-Oršić, *University of Rijeka, Croatia*
P. Rigo, *University of Liège, Belgium*
J.W. Ringsberg, *Chalmers University Technology, Sweden*
C.M. Rizzo, *University of Genova, Italy*
J. Romanoff, *Aalto University, Finland*
M. Samuelides, *National Technical University of Athens, Greece*
S. Sriramula, *University of Aberdeen, UK*
K. Tabri, *Tallinn University of Technology, Estonia*
M. Taczala, *West Pomeranian University of Technology, Poland*

Advisory Committee

S. Aksu, *Defence Science & Technology Organisation, Australia*
S. Chandrasekaran, *Indian Institute of Technology, Madras, India*
S.R. Cho, *University of Ulsan, Korea*
M. Collette, *University of Michigan, USA*
W.C. Cui, *Shanghai Ocean University, China*
S.F. Estefen, *Federal University of Rio de Janeiro, Brazil*
B.S. Jang, *Seoul National University, Korea*
J. Jelovica, *University of British Columbia, Canada*
H.W. Leheta, *Alexandria University, Egypt*
Y.M. Low, *National University Singapore, Singapore*
N.R. Mandal, *Indian Institute of Technology, Kharagpur, India*
A. Morandi, *Gusto MSC, USA*

L. Moro, *Memorial University, Canada*
P.T Pedersen, *DTU, Denmark*
C. Tian, *CSSRC, China*
D.Y. Wang, *Shanghai Jiao Tong University, China*
G. Wang, *Jiangsu University Technology, China*
X. Wang, *ABS, USA*
Y. Yamada, *National Maritime Research Institute, Japan*
N. Yamamoto, *ClassNK, Japan*
L. Zhu, *Wuhan University of Technology, China*

Local Organizing Committee

J. Amdahl, *Norwegian University of Science and Technology, Norway*
B. J. Leira, *Norwegian University of Science and Technology, Norway*
Z. Yu, *Norwegian University of Science and Technology, Norway*
E. Kim, *Norwegian University of Science and Technology, Norway*

Technical Programme Secretariat

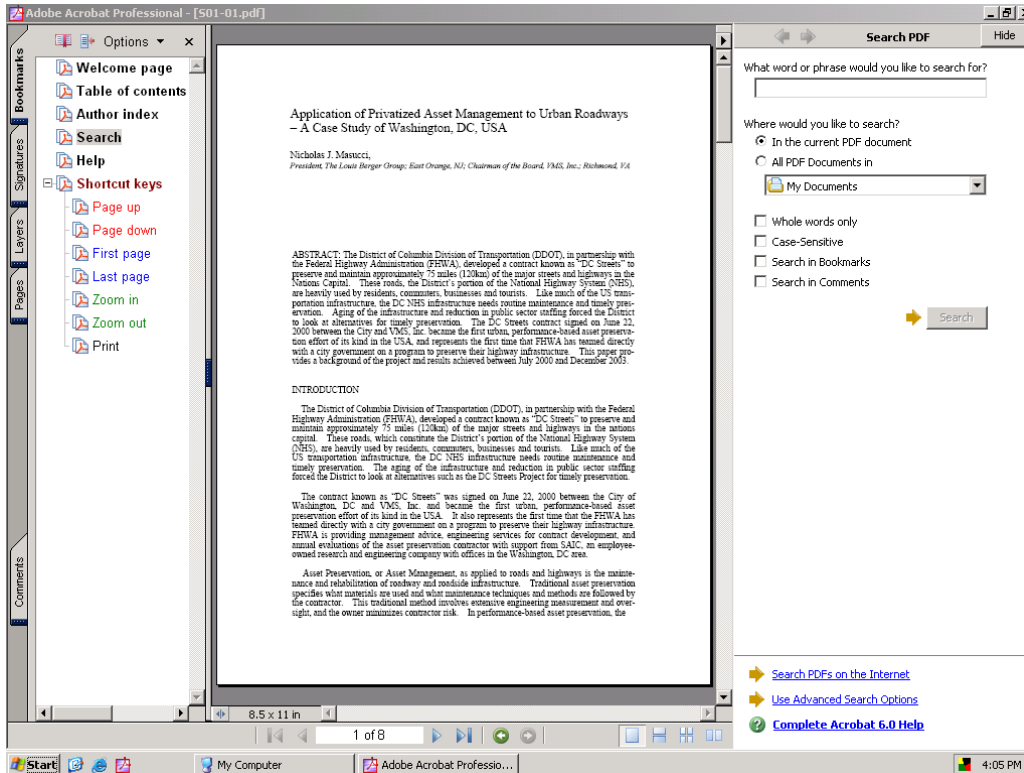
Maria de Fátima Pina, *Técnico Lisboa, University of Lisbon, Portugal*
Sandra Ponce, *Técnico Lisboa, University of Lisbon, Portugal*

Help for Search Option in Adobe Acrobat Version 6.0

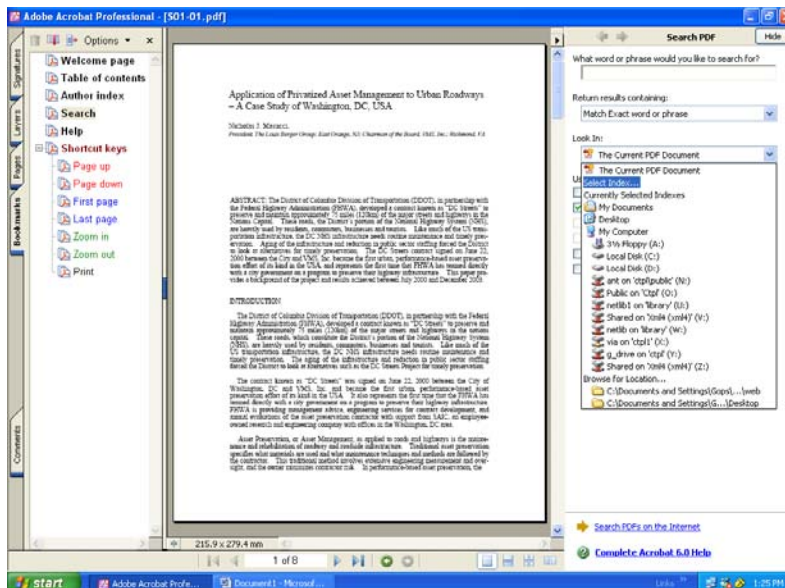
To enable the search option, please follow the screen shots below:

Step 1:

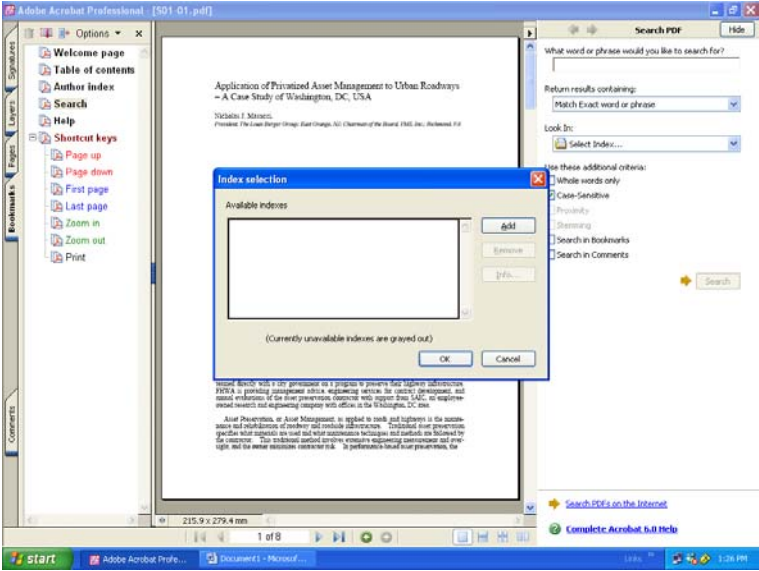
Click the "Search" option. Then you will get the menu box "Search PDF". Please click "Use Advanced Search Options" at the bottom of menu box.



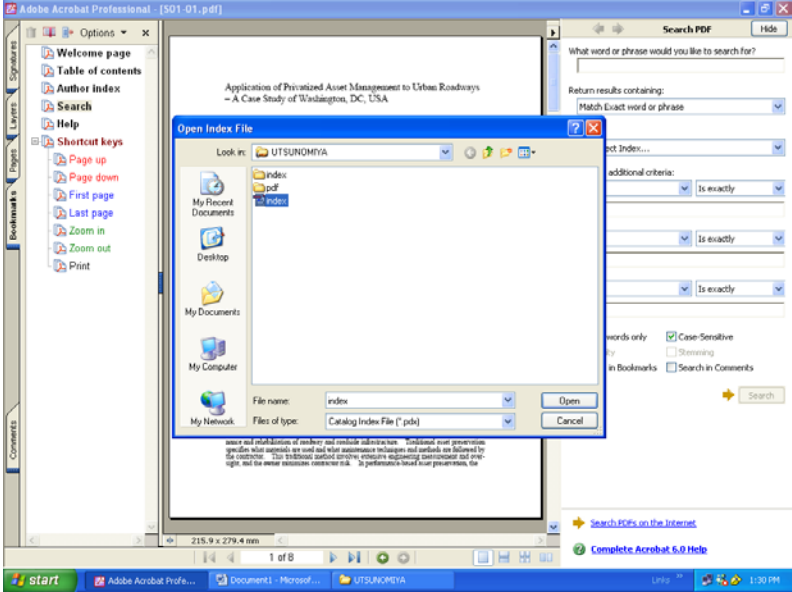
Step 2: Please select "Select Index..." in "Look in" the menu box.

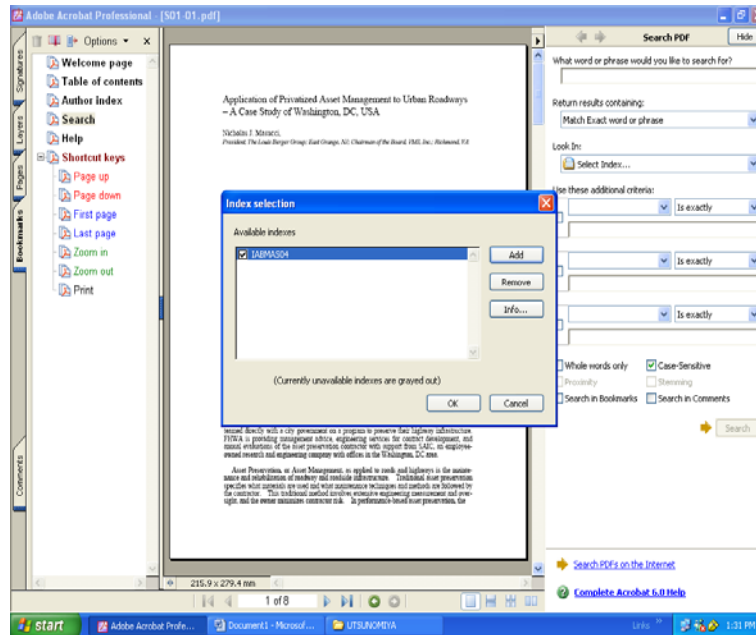


Step 3: Please click “Add” to select index .



Step 4: Select the preferred “.pdx” file and click “open”. The selected index will be added to “Index Selection” menu.





Now search the preferred Session.

Exit Help

To exit help click on “Exit”.



Exit

Table of contents

Preface

Organisation

METHODS AND TOOLS FOR LOADS AND LOAD EFFECTS

Wave loads and seakeeping

Slamming

Explosions

METHODS AND TOOLS FOR STRENGTH ASSESSMENT

Buckling and ultimate strength

Residual strength of damaged structures

Collision and grounding

Corrosion

Fatigue

Composite structures

MATERIALS AND FABRICATION OF STRUCTURES

METHODS AND TOOLS FOR STRUCTURAL DESIGN AND OPTIMISATION

Ship structural design

Tools for structural design

STRUCTURAL RELIABILITY, SAFETY AND ENVIRONMENTAL PROTECTION

Structural reliability

Risk analysis and design codes

Hull monitoring and inspection

Author index

[help](#)

[exit](#)

[main menu](#)

[search](#)

[<](#) [>](#)

METHODS AND TOOLS FOR LOADS AND LOAD EFFECTS

Wave loads and seakeeping

Estimation of rogue wave loads on ship structures by exploiting linear wave theory

M. Acanfora, T. Coppola & E. Fasano

Operability study of passenger ship in the Adriatic Sea using an hindcast database

T. Petranović, A. Mikulić, J. Parunov & M. Katalinić

Numerical investigation of the seakeeping behavior of a polar vessel in head waves

A. van Zuydam, A. Bekker & C.J. Meyer

[help](#)

[exit](#)

[main menu](#)

[search](#)

[<](#) [>](#)

Free-fall water entry of a variable deadrise angle aluminium wedge: An experimental study

S. Hosseinzadeh & K. Tabri

Experimental and numerical investigation of high frequency vibrations in segmented ship model using one-way coupling of CFD and FEM

S.K. Pal, K. Iijima, A. Tatsumi, M. Fujikubo & T. Takami

Experimental and numerical validation of an analytical hydro-plastic model for the prediction of structural damage in extreme water slamming

Z.L. Yu, A. Cao & J. Amdahl

Estimation of damage extents and evaluation of survivability of surface ships subjected to near-field explosion

B.C. Cerik & J. Choung

Analysis of the underwater explosion shock effects on a typical naval ship foundation structure: Experimental and numerical investigation

F. Mannacio, A. Barbato, C.M. Rizzo, M. Gaiotti & M. Venturini

Response of composite plates in air-backed and water-backed conditions subjected to a far-field underwater explosion

Y.P. Sone Oo, H. Le Sourne & O. Dorival

Experimental studies of the motion characteristics of bubble close to a flexible structure with attached air bubble

X. Wen, J. Wang & K. Liu

Influence of stochastic geometric imperfection on the ultimate strength of stiffened panel in compression

D.G. Georgiadis, M.S. Samuelides, S. Li, D.K. Kim & S. Benson

WeldInp – Method to include welded zones in large numerical ABAQUS FE models

M. Körgesaar, T. Jalasto & H. Alsos

A Timoshenko beam finite element formulation for thin-walled box girder considering inelastic buckling

S. Li, S. Benson & R.S. Dow

Numerical estimation of ultimate strength on double hull oil tanker cargo area

M.Z. Muis Alie, M. Fathurahkman, Juswan & F.A. Prasetyo

Prediction of the ultimate strength of a stiffened plate through the investigation of a stiffener-plate element: Effect of boundary conditions

V. Panagiotopoulos & M.S. Samuelides

Effect of low cycle/high amplitude loads on the moment carrying capacity of a ship's hull

M. Preventas, S. Fanourgakis & M.S. Samuelides

METHODS AND TOOLS FOR STRENGTH ASSESSMENT

Residual strength of damaged structures

A 3D ultimate limit state surface for intact and collision-damaged ship hulls

A. Kuznecovs & J.W. Ringsberg

Ultimate strength performance of full-scale degraded ship structures

K. Nahshon, M. Smith, G. Shilling, T. Magoga & R. Chiritoiu

Residual ultimate strength assessment of collision-damaged steel floating bridge girders

Y.Y. Sha, Z.L. Yu & J. Amdahl

[help](#)

[exit](#)

[main menu](#)

[search](#)

[<](#) [>](#)

METHODS AND TOOLS FOR STRENGTH ASSESSMENT

Collision and grounding

Design against ship collisions in accordance with the new DNV RP C204

J. Amdahl & Z.L. Yu

Investigation of accumulated plastic damages on ship plates subjected to repeated ice impacts

W. Cai & L. Zhu

Response of aluminium bridge girders subjected to shipping container impacts

S.M. Dyrkolbotn, Y. Sha & Z. Liu

Dynamic behavior of sandwich beam with metal foam under repeated impacts loadings

K. Guo, L. Zhu, X.G. Wang & D. Liu

Numerical study of the structural consequences of ship impacts on a floating bridge in a risk analysis perspective

Y.L. Jin, T. Moan & Y.Y. Sha

Review of the uncertainties in load and strength modelling in ship collisions

S.J. Kim, P. Lehto, K. Berntsson, S. Hirdaris, J. Romanoff, M. Kõrgesaar & J.M. Sohn

Assessment of the energy balance gap for ship-FOWT collision simulations with LS-DYNA/MCOL

Í. Ladeira, H. Le Sourné, S. Echeverry & P. Rigo

On the influence of buoyancy forces, failure strain and friction coefficient on the damage extent of a grounded ship

H. Le Sourné, J.P. Pineau, C.B. Ummnakwe, T. Wesoly & O. Dorival

Discussions on the ductile fracture prediction of ship structures under impact loads

Y. Lu, K. Liu, Z. Wang, W. Tang & J. Amdahl

Ship collision events against reinforced concrete offshore structures

L. Márquez, P. Rigo & H. Le Sourné

Rapid assessment of ship bottom sliding on paraboloid shaped rock

J.P. Pineau & H. Le Sourné

Improving crashworthiness calculations for safe containment of hazardous fuels

N.P.M. Werter, T.S.J. van Dijk, S.J. van den Boom, O.J. Coppejans & A.W. Vredeveltd

Ship collision against a 10 MW semi-submersible floating offshore wind turbine

Z.L. Yu & J. Amdahl

A nonlinear numerical simulation approach for the dynamic responses analysis of floating wind turbine under ship impact scenario

Y. Zhang & Z. Hu

[help](#)

[exit](#)

[main menu](#)

[search](#)

[<](#) [>](#)

METHODS AND TOOLS FOR STRENGTH ASSESSMENT

Corrosion

Corrosion detection with computer vision and deep learning

A. Matthaiou, G. Papalambrou & M.S. Samuelides

Experimental studies on the residual strength of corroded stiffened plates

S.-H. Park, J.-S. Kim, S.-R. Cho, Y.-S. Jang & N.-K. Baek

Development of a global corrosion map towards digital twin applications for marine structures

Z. Wang, Y. Wang & A.J. Sobey

[help](#)

[exit](#)

[main menu](#)

[search](#)

[<](#) [>](#)

Model testing and comparison to analysis of the closed steel aquaculture unit Aquatraz G4

A.J. Berstad

Fatigue life estimation of welded joint in a jacket leg using stochastic finite element analysis

M.L. Larsen, V. Arora & S. Adhikari

Full-scale fatigue damage investigation of a slamming-prone vessel with unique section modulus characteristics

K. Pferdekamper & A. Bekker

METHODS AND TOOLS FOR STRENGTH ASSESSMENT

Composite structures

Real-Time monitoring of crack propagation in fiber-reinforced composite plates using iFEM methodology

A. Kefal, I.E. Tabrizi & M. Yildiz

Delamination damage identification in composite shell structures based on Inverse Finite Element Method and Refined Zigzag Theory

A. Kefal & A. Tessler

Buckling and material failure analyses on composite cylindrical shells subjected to hydrostatic pressure

X. Zhang, W. Xu, Z. Li, K. Shen, L. Jiang, G. Pan & C. Guedes Soares

[help](#)

[exit](#)

[main menu](#)

[search](#)

[<](#) [>](#)

Effect of manufacturing parameters on the mechanical properties of filament wound composite materials

P.S. Chatzinas, E.P. Bilalis, A.Z. Papadakis & N.G. Tsouvalis

Comparison of fiber content measuring methods of Filament Wound CFRPs

P.S. Chatzinas, D.E. Tsiourva, E.P. Bilalis & N.G. Tsouvalis

Vessel's structure fabrication process measurement—a dry-docking case

D. Rabar & D. Pavletić

On the potential of Robotic Additive Manufacturing platforms for marine applications

S.S. Marchese, S.S. Marchese & V. Crupi

Structural design and analysis of a large RORO ship

J. Andrić, P. Prebeg, M. Bicak, S. Pavletić, A. Dmitrasinović & K. Pirić

Green design of strip-planked Iroko wood for boatbuilding

S. Bertagna, A. Marinò, P. Corigliano & V. Crupi

Structural re-design of a composite pleasure craft with direct and numerical calculations

D. Boote, G. Vergassola, V. Hydar & S. Mitolo

Environmental impact of light-weight structures in marine applications

G. Palomba, V. Crupi & Y. Garbatov

Shipbuilding Class Societies virtual approval

R. Pérez Fernández & M. Toman Fernández

Blade deformation prediction of floating wind turbine based on an AI-based SADA method

P. Chen & Z.Q. Hu

Assessment of VIV fatigue of subsea template jumper by using a time domain model

L. Sieber, S. Sævik, J.W. Ringsberg & Z.H. Liu

Fatigue damage analysis of dynamic power cables by laboratory testing and FE analysis

G. Svensson, S. Sævik & J.W. Ringsberg

Local buckling reliability assessment of corroded subsea pipelines under combined loads

U. Bhardwaj, A.P. Teixeira & C. Guedes Soares

Inland water floating debris cleanup vessel

A. Bleoju, A.M. Pohilca & C.I. Mocanu

Structural reliability of a novel offshore floating photovoltaic system to supply energy demands of ports

M. López, R. Claus, F. Soto, A. Cebada, Z.A. Hernández-Garrastacho & O. Simancas

Application of decision trees to predict damage consequences during the progressive flooding

L. Braidotti, J. Prpić-Oršić & M. Valšić

Design loads for marine facilities

O.T. Gudmestad & S. Nepal

A risk based approach for equivalent safety assessment of alternative fuels for green shipping

P.S. van Lieshout, T.S.J. van Dijk, C.E.C. Hulsbosch Dam, A.J.W. van den Brink & A.W. Vredeveltdt

Evaluation of fracture criterion based on the RVE model for evaluation of collision accidents

D. Sagástegui & N.M. Ramos

Damage identification of 1D and 2D structures based on model curvature analysis

D. Dessi & F. Passacantilli

Hull structural response prediction using distortion base modes

D-Y. Lee, B-S. Jang & J.W. Ringsberg

Structural surface assessment of ship structures intended for robotic inspection applications

F.M. Shah, T. Gaggero, M. Gaiotti, L. Ivaldi & C.M. Rizzo

Preface

This book contains the papers presented at the 8th International Conference on Marine Structures, MARSTRUCT 2021, held 7 to 9 June 2021, and organized by the Norwegian University of Science and Technology. This is the eighth event in the MARSTRUCT Conference series and follows on from previous events held in Glasgow – Scotland, Lisbon – Portugal, Hamburg – Germany, Espoo – Finland, Southampton – UK, Lisbon – Portugal, and Dubrovnik – Croatia, in 2007, 2009, 2011, 2013, 2015, 2017 and 2019 respectively.

The main objective of the MARSTRUCT Conferences is to provide a specialised forum for academics, researchers and industrial participants to discuss progress in their research directly related with structural analysis and design of marine structures. It was the intention that the MARSTRUCT Conferences be specifically dedicated to marine structures, which complements other conferences on general aspects of ships and offshore structures already available.

This series of Conferences is one of the main activities of the MARSTRUCT Virtual Institute (<http://www.marstruct-vi.com>), an association of research groups interested in cooperating in the field of marine structures, which was created in 2010 after the end of the Network of Excellence on Marine Structures (MARSTRUCT), which was funded by the European Union. The MARSTRUCT Virtual Institute was created with the same members as the EU project, but with the aim to extend that membership to other interested groups in the future.

The Conference reflects the work conducted in the current trends in analysis and design of marine structures, including the full range of methods, modelling procedures and experimental results. The aim is to promote knowledge that enables marine structures to be more efficient, environmentally friendly, reliable and safe using the latest methods and procedures for their design and optimisation.

This Conference was held amidst the difficult conditions of the COVID-19 pandemic, which has now lasted for one and a half years. This was the first time a Conference in this series was held remotely that presented a major challenge. The health situation led to uncertainties as to the best option to take and hesitations persisted for some time between postponing the Conference by one year or holding it virtually. The decision to go ahead with the Conference was made at a late stage leaving little time for authors to prepare their papers. Even so, the number of papers submitted have been good, only slightly lower than previous editions of the Conference. In the end, the online Conference did run very well and left accumulated experience for future events.

The book contains 64 papers that are categorized in the following themes and areas of research:

- Methods and tools for loads and load effects
- Methods and tools for strength assessment
- Materials and fabrication of structures
- Methods and tools for structural design and optimisation
- Structural reliability, safety and environmental protection

We hope that the overview coming from experts of different sectors will be an important contribution to the audience.

The articles in this book were accepted after a peer-review process, based on the full text of the papers. Thanks are due to the Technical Programme and Advisory Committees who had most of the responsibility for reviewing the papers. We are also grateful to the additional anonymous reviewers who helped the authors deliver better papers by providing them with constructive comments, and hope that this process contributed to a consistently good level of the papers included in the book.

J. Amdahl & C. Guedes Soares

Numerical estimation of ultimate strength on double hull oil tanker cargo area

M.Z. Muis Alie, M. Fathurahkman & Juswan

Department of Ocean Engineering, Engineering Faculty, Hasanuddin University, Makassar, Indonesia

F.A. Prasetyo

Research and Development Divison, Biro Klasifikasi Indonesia, Jakarta, Indonesia

ABSTRACT: Ship's hull consists of many elements located in deck, side shell and bottom structures. Those elements are unstiffened and stiffened plates and resist all the internal and external loads like cargos and waves. The primary element support the longitudinal strength is always to be investigated under loading conditions. The loads act perpendicular along the hull is resisted from these elements. The objective of the present study is to estimate the ultimate strength of Double Hull Oil Tanker cargo area using numerical analysis. Two Double Hull Oil Tankers are taken as the object in this study. The cargo tank is considered to be analyzed and the shell element is used to the entire model. The bending moment is connected to Multi-Point Constraint (MPC) at one side and the other side is constrained. The ultimate strength of chosen oil tanker is conducted under hogging and sagging conditions.

1 INTRODUCTION

1.1 Background

Double hull oil tanker is a special ship due to its payload contains liquid which can be flammable. The fluid also moves and press inside cargo tank so that this would be internal force along cargo area. On the other hand, the external force such as waves also have influence to ultimate strength of ship global structure. So that the cargo area of double hull oil tanker should be assessed to the ultimate strength. The ultimate strength is always considered for ship design criteria. Some methods and tools are used and implemented to analyze the ultimate strength of ship such as beam theory, simplified approach and numerical method.

1.2 Previous studies

The ultimate strength analysis of ship has been carried out by numerous research analysts, particularly for tankers and bulk carriers. Li & Tang, (2019), stated that a structural reliability analysis model in accordance with a Bayesian belief network was recommended for the hull girder collapse risk after an accident. The Bayesian belief network was used to illustrate random variables of risk events after an accident, as well as their vulnerability. In addition, the structural reliability analysis was used to evaluate the failure probability of

the hull girder after each possible undesirable condition. Subsequently, Campanile, et al (2018) carried out a study on the relative frequency of collision damage models on an oil tanker and the reliability of bulk carriers in accordance with the IACS deterministic pattern opposing the GOLADS/IMO database statistics for such events, as well as verifying the probabilistic model. In addition, the dependability of an oil tanker in intact condition was carried out to review the incidence of load combination methods on hull girder sagging or hogging time-variant failure probability Campanile, et al (2017). A simplified approach was used to analyze the ultimate strength of asymmetrically damaged ships following the critical elements subjected to sagging condition (Muis Alie, 2018).

The ultimate residual strength of ship hull plates, which are dependent on uniaxial cyclic load was also reviewed by carrying out numerical analysis using nonlinear finite element method (Xia, et al 2019). The local elements and their progressive collapse due to hogging and sagging condition were subjected to longitudinal bending moment using the nonlinear finite element method were conducted by Muis Alie & Latumahina (2019). (Wang, et al (2019) studied the maximum loading carrying capacity for Ultra-large container ship with an enormous deck opening and decreased torsional rigidity. The ultimate strength of the hull girder subjected to the three load components is carefully analyzed in this study.

In addition, Van, et al (2018) stated the effect of initial imperfection and corrosion wastage on the age-related strength degradation of bulk carriers. Parunov, et al (2017) reported that the residual strength of an Aframax-class double hull oil tanker damaged in the collision was assessed by considering the influence or effect of the rotation of the neutral axis. According to Guia, et al (2018) the probabilistic characteristics of the hull girder, tend to target the safety level of a Suesmax tanker derived from a cost-benefit analysis was also assessed. A simplified analytical method was used to examine the energy absorbed by double-hull ship structures subjected to a flat edge indenter (Liu, 2017). Furthermore, Xu, et al (2017) present a reliable and suitable FE modelling in the explicit dynamic method, which could keep the balance of the acceptable accurate results and computation resources.

Wang, et al (2020) present a similar scale model of a 10,000TEU container ship has been designed and manufactured first, in which both geometric similarity and strength similarity are taken into account. The ultimate and residual strength analyses of a double-hull tanker ship during biaxial bending moment conditions was presented by Kuznecovs, et al (2020). Wang, et al (2019a) presented the similarity between scale model and true ship in cross-section considering the height of neutral axis, the section modulus, the inertia moment about neutral axis and the polar inertia moment should fit the geometrical similarity theory, and in strength considering buckling strength and shear ultimate strength of plates and stiffened panels should fit the strength similarity theory.

The previous studies show that the ultimate strength is very important especially for double hull oil tanker. The present study focuses on the estimation of the ultimate strength on Double Hull Oil Tanker cargo area using numerical analysis. The section locate in the mid of ship's length of scantling, L , while x/L is equal to 0.5, is called as the midship section. The midship section represents the characteristics of ship's hull under longitudinal bending. The ship's hull of Double Hull Oil Tanker is modeled by using numerical method. The cargo tank is considered to be analyzed and the shell element is used to the entire model. A cargo tank that locates nearly at the midship section of the ship ($0.5 x/L$) is chosen. The bending moment is connected to Multi-Point Constraint (MPC) at one side and the other side is constrained. The MPC is placed at the neutral axis position as reference point. It is assumed that the cargo tank of chosen oil tanker remained plane during progressive collapse. The ultimate strength of chosen oil tanker is conducted under hogging and sagging conditions. The ultimate strength in term of moment-curvature curve is presented.

2 METHOD OF ANALYSIS

2.1 Simple formulation

The ship's hull may be idealized as a simple beam which is floating on the water surface. The ship hull may experience hogging and sagging conditions due to internal loads and external loads such as payload acting inside cargo tank and waves. In this case, the total vertical bending is the summation of still water bending moment and waves bending moment.

So that the Equation should be (DNVGL, 2017):

$$M_T = M_{SW} + M_W \quad (1)$$

The section modulus and section inertia are calculated in advance to obtain the neutral axis position as follow,

$$z = \frac{I}{W} \quad (2)$$

This neutral axis position is base to place the Multi-Point Constrained (MPC). The total vertical bending moment is given in this MPC as a force rotation at one side of the cargo tank of the double hull oil tanker. In the present study, the longitudinal strength of double hull oil tanker is analyzed using numerical calculation. Two double hull oil tankers are taken to be investigated. One cargo tank of two double hull oil tankers is considered. The cross section of cargo tank is assumed remain plane during progressive collapse. It should be noted that the analysis is conducted under the axial force condition along the neutral axis to obtain the magnitude of stress occur on deck and bottom part.

In the present study, two models of double hull oil tankers have same dimensions, but different in case of types, numbers and dimensions of longitudinal stiffeners are located in cargo area. Therefore, these influences become motivation in this study to know its effect to ultimate strength. The numerical method is adopted to analyze the ultimate strength of cargo area under hogging and sagging conditions.

2.2 Cross section model

Figures 1 and 2 show the cross section of double hull oil tanker of Model-1 and Model-2. It is already mentioned that both two models are different for type and number of stiffeners on the cross section. Only one side of the model is figured, but the analysis is done by considering fully cross section. Both two models have longitudinal bulkheads located in the center line consisting longitudinal stiffeners on it.

The material properties of two models are constant. There are no cracks; damages, initial imperfection and so on are considered in the analysis. Table 1 shows the material properties for two models of Double Hull Oil Tankers.

Table 1. Materials properties.

Items	Value
Type of material	AH37
Density (kg/m^3)	7850
Modulus Young (N/mm^2)	210000
Poisson's Ratio	0,3
Yield Strength (N/mm^2)	370
Tangent Modulus (N/mm^2)	675

The shell element type is used and implemented to whole cross section models of Double Hull Oil Tanker. The models use the mesh size of 1000 mm so that the total numbers of the elements are 22940. The ANSYS software for academic/student version is adopted to estimate the ultimate strength of two Double Hull Oil Tankers on cargo area under hogging and sagging conditions.

The load and boundary conditions are applied by implementing the MPC place on the neutral axis position as reference point. The analysis conditions are determined by trial and error approach. Figure 3 shows the load and boundary condition of double hull oil tanker.

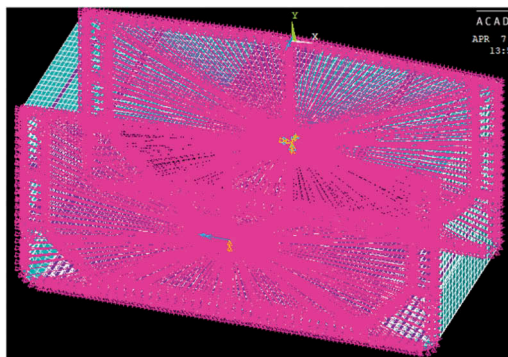


Figure 3. Load and boundary conditions.

3 RESULT AND DISCUSSION

3.1 Stress distribution

Figures 4 and 5 describe stress under hogging condition on Model-1 and Model-2 of double hull oil tanker, respectively.

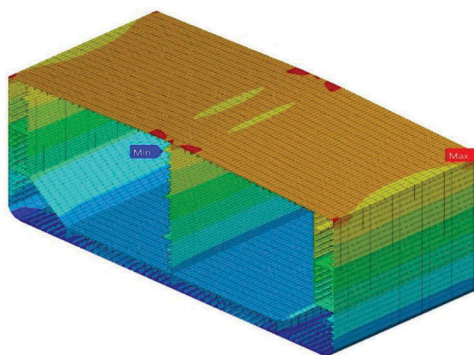


Figure 4. Stress Model-1 for hogging condition.

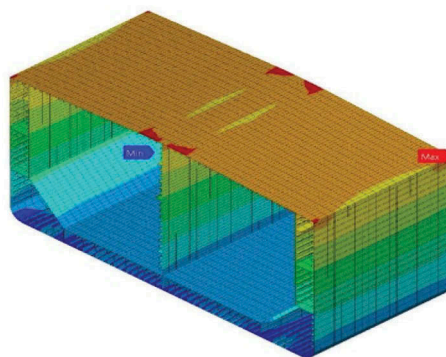


Figure 5. Stress Model-2 for hogging condition.

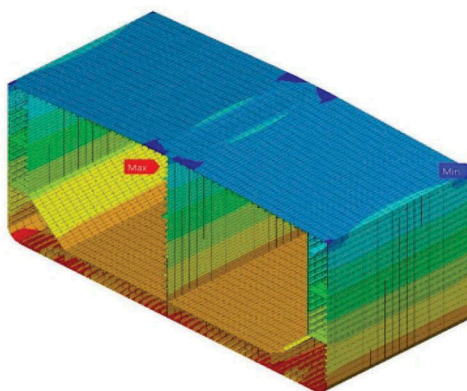


Figure 6. Stress Model-1 for sagging condition.

According to Figures 4 and 5 that the stress magnitude occurs under hogging due to tension at deck part. While the stress bottom part is under compression.

Figures 6 and 7 express stress under sagging condition of double hull oil tanker on Model-1 and Model-2, respectively. In case of sagging condition, deck part is under compression, while bottom is under tension.

The ultimate strength of cargo area of two double hull oil tankers considering the influence of difference type and number of longitudinal stiffeners are conducted using numerical method. Figure 8 express the moment-curvature relationship of double hull oil tanker for Model-1 and Model-2 under hogging condition.

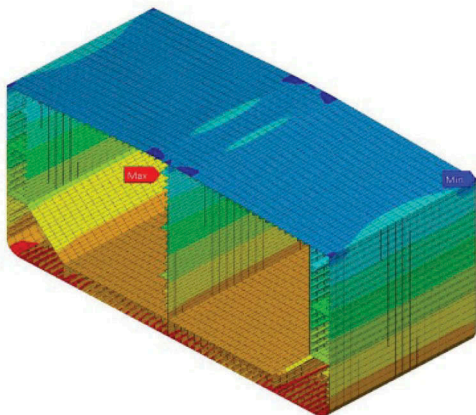


Figure 7. Stress Model-2 for sagging condition.

There are two models of double hull oil tanker namely Model-1 and Model-2 to distinguish between both of them due to the differences of type and number of longitudinal stiffeners. Model-1 is represented with dashed line and Model-2 with solid line.

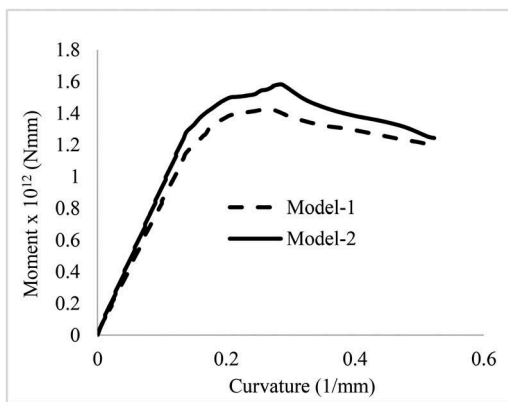


Figure 8. Moment-curvature for hogging condition.

The ultimate strength under sagging condition for Model-1 and Model-2 of double hull oil tanker is shown in Figure 9. The ultimate strength obtained by numerical method for Model-2 is larger than Model-1 both for hogging and sagging. Particularly in sagging condition, the ultimate strength of Model-2 is larger than Model-1. This is because the type and dimension of longitudinal stiffeners at the bottom part is completely different between Model-1 and Model-2 since the two model under sagging condition.

The section modulus and section inertia also influence to the ultimate strength since the ship is under tension or compression. In this regard, the neutral axis position determines the section modulus and section inertia above and under neutral axis. The second one, the section modulus and section inertia is also caused by the type, number and dimension of longitudinal stiffeners located at bottom, side shell and bottom part.

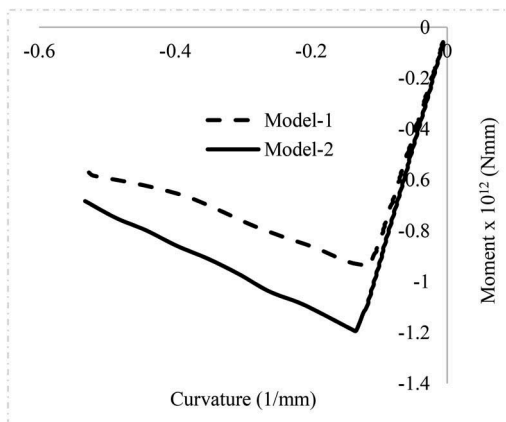


Figure 9. Moment-curvature for sagging condition.

In addition, according to Figures 8 and 9, the bending stiffnes are also different due to the effect of type, dimension and number of longitudinal stiffeners. It is found that the bending stiffnes of Model-1 is lower than Model-2 under hogging and sagging conditions.

4 CONCLUSIONS

The estimation of the ultimate strength on cargo area of two double hull oil tankers under hogging and sagging conditions has been conducted using numerical analysis. Two types of double hull oil tankers namely Model-1 and Model-2 are taken to be investigated. The ultimate strength on cargo area of Model-2 is larger than Model-1 both hogging and sagging conditions due to the influence of

properties between two models such as types, numbers and dimensions of longitudinal stiffeners on the cargo area. The section modulus and section inertia also influence to the neutral axis position where the MPC is placed.

REFERENCES

- Campanile, A., Piscopo, V. and Scamardella, A. (2017). Incidence of load combination methods on time-variant oil tanker reliability in intact conditions. *Ocean Engineering*. 130: pp. 371–384.
- Campanile, A., Piscopo, V. and Scamardella, A. (2018). Conditional reliability of bulk carriers damaged by ship collisions. *Marine Structures*. 58: pp. 321–341.
- DNV GL. 2017a. Rules for Classification
- Guia, J., Teixeira, A.P. and Guedes Soares, C. (2018). Probabilistic modelling of the hull girder target safety level of tankers. *Marine Structures*. 61: pp. 119–141.
- Kuznecovs, A. *et al.* (2020). Ultimate limit state analysis of a double-hull tanker subjected to biaxial bending in intact and collision-damaged conditions. *Ocean Engineering*. 209: pp. 107519.
- Li, X. and Tang, W. (2019). Structural risk analysis model of damaged membrane LNG carriers after grounding based on Bayesian belief networks. *Ocean Engineering*. 171: pp. 332–344.
- Liu, B. (2017). Analytical method to assess double-hull ship structures subjected to bulbous bow collision. *Ocean Engineering*. 142: pp. 27–38.
- Muis Alie, M.Z and Latumahina, S.I. (2019). Progressive collapse analysis of the local elements and ultimate strength of a Ro-Ro Ship. *International Journal of Technology*, 10(5): pp. 1065–1074.
- Muis Alie, M.Z. (2018). Simplified approach on the ultimate hull girder strength of asymmetrically damaged ships,” *International Journal of Offshore and Polar Engineering*, 28(2): pp. 200–205.
- Parunov, J., Rudan, S. and Bužančić Primorac, B. (2017). Residual ultimate strength assessment of double hull oil tanker after collision. *Engineering Structures*. 148: pp. 704–717.
- Van, T. V., Yang, P. and Van, T. D. (2018). Effect of uncertain factors on the hull girder ultimate vertical bending moment of bulk carriers. *Ocean Engineering*. 148: pp. 161–168.
- Wang, C., Wu, J. and Wang, D. (2019a). Design similar scale model of a 10,000 TEU container ship through combined ultimate longitudinal bending and torsion analysis. *Applied Ocean Research*. 88: pp. 1–14.
- Wang, C., Wu, J. and Wang, D. (2019b). Experimental and numerical investigations on the ultimate longitudinal strength of an ultra large container ship. *Ocean Engineering*. 192: pp. 106546.
- Wang, Q., Wang, C., Wu, J. and Wang, D. (2020). Experimental and numerical investigations of the ultimate torsional strength of an ultra large container ship. *Marine Structures*. 70: pp. 102695.
- Xia, T., Yang, P., Li, C. and Hu, K. (2019). Numerical research on residual ultimate strength of ship hull plates under uniaxial cyclic loads. *Ocean Engineering*. 172: pp. 385–395.
- Xu, M. C., Song, Z. J. and Pan, J. (2017). Study on influence of nonlinear finite element method models on ultimate bending moment for hull girder. *Thin-Walled Structures*. 119: pp. 282–295.