

# Diversity and use of traditional medicinal plant species in Bantimurung-Bulusaraung National Park, Indonesia

IIN PERTIWI A. HUSAINI<sup>1,3</sup>, RISMA ILLA MAULANY<sup>2,\*</sup>, NASRI NASRI<sup>2</sup>, PUTU OKA NGAKAN<sup>2</sup>

<sup>1</sup>Faculty of Forestry, Universitas Hasanuddin. Jl. Perintis Kemerdekaan Km. 10, Makassar 90245, South Sulawesi, Indonesia. Tel./fax.: +62-411-588566, \*email: risma.maulany@unhas.ac.id

<sup>2</sup>Forest Conservation Department, Forestry Faculty, Universitas Hasanuddin. Jl. Perintis Kemerdekaan Km. 10, Makassar 90245, South Sulawesi, Indonesia

<sup>3</sup>Research Center for Plant Conservation, Botanic Gardens and Forestry-National Research and Innovation Agency. Jl. Ir. H. Juanda No.13, Bogor 16122, West Java, Indonesia

Manuscript received: 24 August 2022. Revision accepted: 24 October 2022.

**Abstract.** Husaini IPA, Maulany RI, Nasri N, Ngakan PO. 2022. Diversity and use of traditional medicinal plant species in Bantimurung-Bulusaraung National Park, Indonesia. *Biodiversitas* 23: 5539-5550. The people of Minasatene (Pangkep District) in Bantimurung-Bulusaraung National Park, South Sulawesi (Indonesia) have used traditional medicinal plants for many centuries. However, this local knowledge has not been recorded. This study aims to examine the diversity of plant species used to treat various ailments in the area. A set of semi-structured questionnaires was distributed to 60 respondents, consisting of traditional healers, elderly people, herb sellers and local people of Minasatene. This was used to obtain a demographic profile, vernacular names of plants and their uses, plant parts used, modes of preparation and methods of application. The diversity and use of the medicinal plant species in a traditional context were descriptively analyzed. The data were further extrapolated using *Use Value* (UV) to analyze the relative importance of plant species based on the number of uses; *Fidelity Level* (FL) to determine the specific uses of each plant species and preference over other species, and *Informant Consensus Factor* (ICF) to investigate an agreement between each group of diseases and related remedies. The study reveals that there were 74 species of medicinal plants belonging to 65 genera and 44 families being used as traditional medicines, which have been known to treat 54 ailments. Among the plant species, soursop (*Annona muricata*) had the highest UV (0,95), while the fig tree species, *Ficus septica* (100%) had the highest FL with the most frequent citation. From the data gained, it was found that skeletomuscular disorders had the highest ICF value (0,92).

**Keywords:** Bantimurung-Bulusaraung National Park, diversity, ethnobotany, Minasatene, traditional medicinal plants

## INTRODUCTION

Indonesia is a mega-biodiversity country known for its rich flora with 30,000-40,000 species identified (Ministry of National Development Planning 2016; Atik et al. 2019). Of these, only tiny percentages are known for their potential and benefits to the community, of which, medicinal herbs are the one. About 6,000 plant species in Indonesia are known to have potential as herbal medicine (Elfahmi et al. 2014). Recently, the use of medicinal plants has been increasing in the community and has become one of the alternative treatments (Rahayu et al. 2020). People tend to use medicinal plants due to the lack of negative side effects (Karimi et al. 2015) and their accessibility and low cost (Mahomoodally 2013; Malini et al. 2017), compared to modern drugs.

Medicinal plants have been found as an important contributor to the pharmaceutical, agricultural and food industries (Krishnan 2016). Plants were used as a basis of some of the most important drugs, such as diuretic activity in *Mangifera indica*, antiparasitic activity in *Carica papaya*, and anti-inflammatory activity in *Curcuma longa* (Yudharaj et al. 2016). During the COVID-19 pandemic, medicinal plants were also chosen as one of many interventions and explored across the world to find an

effective as well as a complimentary cure for the disease alongside conventional treatments (Lim et al. 2021). Many studies have revealed that the use of medicinal plants for COVID-19 cases has assisted in prevention, reducing the severity of the disease and alleviating its effects (Chan et al. 2020; Panyod et al. 2020; Vellingiri et al. 2020). Here, the role of medicinal plants should not be underestimated.

Ethnobotany knowledge about medicinal plants has long been inherited from generation to generation (Yuan et al. 2016; Zikri et al. 2018; Li et al. 2020; Rastogi et al. 2020). But this traditional knowledge is currently facing the threat of disappearance due to loss of use in a society competing with modern drugs. This shift is related to changes in communities going through modernization (Malini et al. 2017), the death of the holders of knowledge of medicinal plants, which belongs only to older persons (>60 years) and traditional shamans or healers (Silalahi et al. 2015), as well as the lack of people who cultivate medicinal plants (Syamsiah et al. 2016).

Many people around the world still depend on the use of medicinal plants for their primary healthcare, in particular around Africa, some parts of Asia and Central and South America (Allkin 2017). Different tribes across the world have different medicinal plant species. This has caused differences in procedures for the utilisation of

medicinal plants, species of plants used as medicinal herbs, parts of plants used, diseases treated, plant processing and application (Syamsiah et al. 2016). As many have attempted to open doors for the use of medicinal plants, few plant species have been identified and explored. Like other regions, people in Sulawesi (Indonesia) also have a traditional medicine system known as *Lontaraq Pabbura* (Lukman et al. 2014). And, people in Sulawesi use plants from the forest as traditional medicines to maintain their health and treat a number of diseases (Mustofa et al. 2020; Azis et al. 2020; Pandiangan et al. 2019). However, there has been no documented data that reports on TMPs being used in treating ailments among the people of Minasatene.

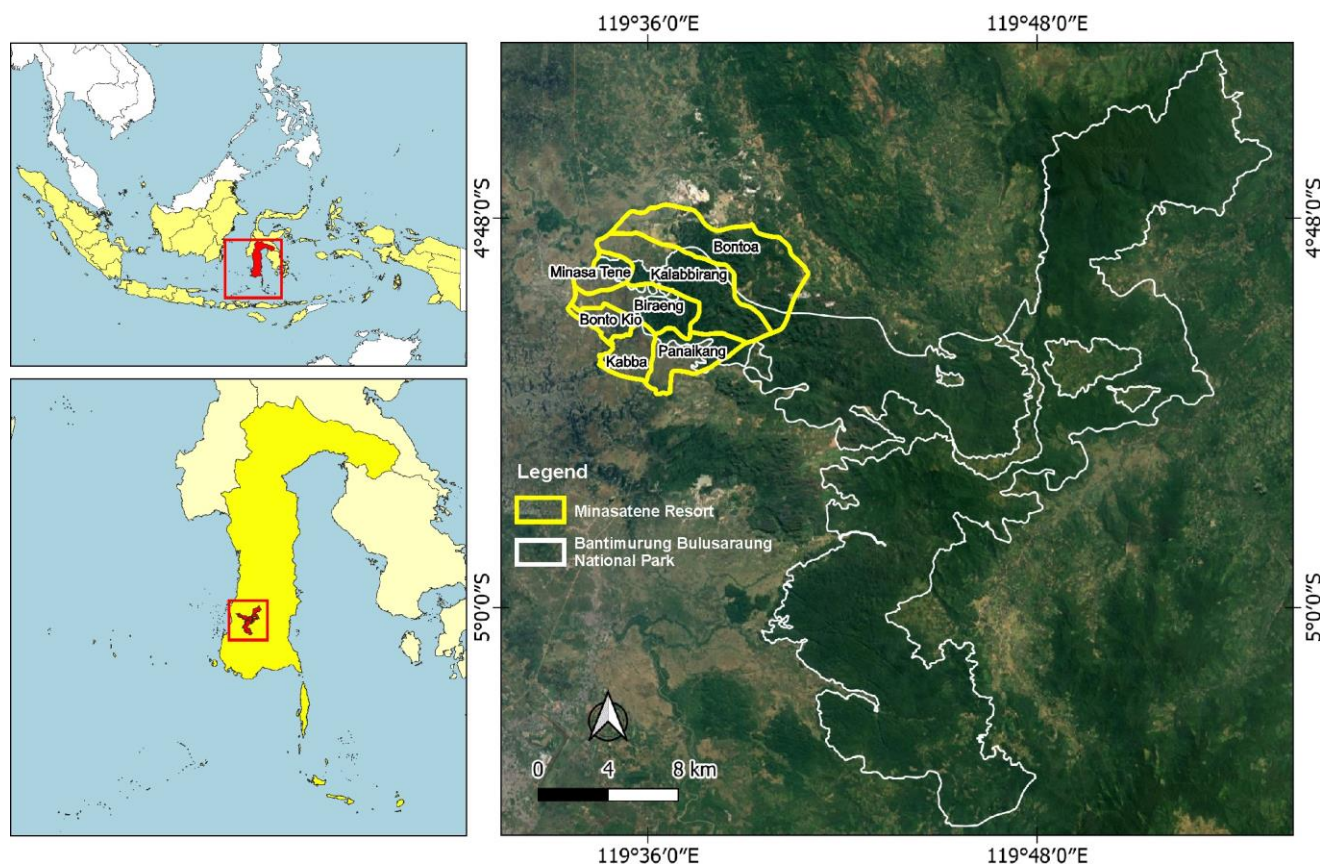
Bantimurung-Bulusaraung National Park is located in the unique karst formation and is known as the second-largest karst area after China, with a width of more than 40,000 ha. The national park was established in 2004 by the Ministry of Forestry (Siburian 2010). The presence of a karst ecosystem has become a distinct feature of this region (Puspitaningtyas 2017). It is also known for the diversity, uniqueness and beauty of its plants; there are 709 species of plants derived from 100 families that have been identified (Ministry of Environment and Forestry 2016). As one potential habitat for medicinal plants, the national park has not been widely explored. This study aims to examine the diversity and use of traditional medicinal plants by the local community living adjacent to Bantimurung-

Bulusaraung National Park. It is expected that the results of the study will provide essential answers related to the knowledge and use of medicinal plants for curing certain diseases by the locals obtained in the forest but these could also be further used to initiate and promote forest conservation efforts in the area through community empowerment.

## MATERIALS AND METHODS

### Study area

This study focused on the community living in the buffer area of Bantimurung-Bulusaraung National Park. The Minasatene area, as part of the national park, is a buffer area and is located in the Pangkajene Kepulauan (Pangkep) District, South Sulawesi Province, Indonesia (Figure 1). The area is situated between  $4^{\circ} 47'33''$  to  $4^{\circ} 53'24''$  south latitudes and  $119^{\circ} 33'30''$  to  $119^{\circ} 40'55''$  east longitudes. The distance between the study area and the capital city of South Sulawesi Province (Makassar) is approximately 55 km. The total area of Minasatene is 79.15 km<sup>2</sup> and is the district with the highest population density compared to other buffer areas of the national park, with 39,364 people (Ministry of Environment and Forestry, 2016).



**Figure 1.** Location of Minasatene Resort, Bantimurung Bulusaraung National Park, South Sulawesi, Indonesia

## Procedures

In this study, 60 respondents were interviewed, consisting of traditional healers, elderly people, herb sellers, and local people of Minasatene in Bantimurung-Bulusaraung National Park. A traditional healer is a person who uses traditional medicine to cure people who are ill or injured. An elderly person is a person 60 years of age or older who understands the use of medicinal plants. A herb seller is a person who sells herbs, especially medicinal herbs. Local people in this study are defined as the people who live in Minasatene Resort, are aged 30-80 years old and have used medicinal plants. Informant selection, in particular the healers, was based on the snowball sampling technique. The subsequent informants are determined by the directions given by the previous respondents.

Ethnobotanical data were collected from November 2021 to January 2022 using semi-structured interviews. The collected ethnobotanical data included the demographic profiles of respondents, diversity of plant species (vernacular names of plants), use of medicinal plant species (type of ailments, plant parts used, modes of preparation, and methods of application) and plant origins. The scientific name and family of each medicinal plant mentioned were later checked using different websites of plant databases such as <http://www.theplantlist.org>, and <http://www.powo.science.kew.org>.

Medicinal plants reported by the respondents were grouped into seven categories, according to Jadid et al. (2020). The seven categories were 1) gastrointestinal disorders (ulcers, constipation, flatulence, nauseous, diarrhea, food poisoning and worm infection); 2) dermatological diseases (wounds, bruises, scars, smallpox, hair care, ringworm, skin rash, boils and burns); 3) urogenital and gynecological problems (menstrual cramps, urinary tract infection, kidney disease, leucorrhoea and aphrodisiacs); 4) skeletomuscular disorders (gout, muscle pain, rheumatism, arthritis, back pain and bone pain); 5) internal medical diseases (high cholesterol, cancer, fever, malaria, dengue fever, chills, hemorrhoids, diabetes, hypertension, liver, typhus and heart disease); 6) respiratory, nose, ear, oral, eye and throat problems (coughs, colds, toothache, sprue, sore eyes, asthma, bronchitis, tonsils, stye, mumps and oral thrush); and 7) other (magical and spiritual problems, body odor issues, increase in appetite and breast milk booster).

## Data analysis

The demographic profiles of respondents were processed using Microsoft office excel to find the number of medicinal plant species known to each respondent. The respondents who knew >20 medicinal plant species and respondents who knew ≤20 medicinal plant species were compared based on their gender, age, education, and occupation using chi-square tests (*p*-values).

The diversity and use of medicinal plant data were also processed by excel software and the obtained results were processed by quantitative ethnobotanical indices consisting of *Use Value* (UV), *Fidelity Level* (FL), and *Informant Consensus Factors* (ICF). These three indices are further elaborated on:

### *UV (Use Value)*

To further analyze the relative importance of a medicinal species based on the variety of recorded uses, the UV index was deployed using the formula:

$$UV = \sum U_i / N$$

Where:  $U_i$  is the number of different uses mentioned by each respondent for a given species and  $N$  is the total number of participants (Zenderland et al. 2019).

### *Fidelity Level (FL)*

FL determines the specific uses of each plant species and its preference over other species. Meanwhile, a limitation of this index is that if a plant species has a low number of uses (one use), the FL can be high (100%). In contrast, a plant species with a higher number of uses may have a lower FL (Ceto and Heinrich 2011). In this study, we used frequency of citation (FC) to determine the number of informants who mention the use of a plant species. The resulting FC value can then be correlated with FL to identify a species with high fidelity. FLs were calculated using the following equation:

$$FL = \sum N_p / n$$

Where:  $N_p$  is the number of respondents who mentioned the use of the given species for medicinal treatment and  $n$  is the total number of respondents who cited the plant species for any medicinal treatment (Jadid et al. 2020).

### *Informant Consensus Factor (ICF)*

ICF was determined to investigate the agreement between each group of diseases and reported remedies. ICF was calculated as follows:

$$ICF = (N_{ur} - N_t) / (N_{ur} - 1)$$

Where:  $N_{ur}$  is the number of valuable reports in each ailment category and  $N_t$  is the number of species used for this ailments category (Heinrich et al. 1998).

## RESULTS AND DISCUSSION

### **Demographic profile of study respondents**

This study involved 60 respondents, consisting of 19 traditional healers, 7 elderly people, 4 herb sellers, and 30 local people of Minasatene in Bantimurung-Bulusaraung National Park. These respondents were categorized based on their socio-demographic data (Table 1). Among the 60 respondents, 58% were female and 60% were over 50 years old and 40% were below 40 years old. Most respondents had graduated from high school (31%). The respondents consisted of 25% traditional healers, 22% unemployed/housewives, 13% laborers/farmers, 13% civil servants, 10% private employees and 17% sellers/traders.

**Table 1.** Demographic profile of study respondents (n=60)

Characteristic	No. of respondents	
	Frequency	%
<b>Gender</b>		
Male	25	42
Female	35	58
<b>Age group (years old)</b>		
31-40	8	13
41-50	16	27
51-60	18	30
61-70	9	15
71-80	9	15
<b>Education</b>		
Uneducated	6	10
Elementary	13	22
Secondary school	13	22
High school	19	31
University	9	15
<b>Main occupation</b>		
Traditional healer	15	25
Unemployment/housewife	13	22
Laborer/farmer	8	13
Civil servant	8	13
Private employee	6	10
Seller/trader	10	17
<b>Respondents</b>		
Traditional healer	19	32
Elderly	7	12
Herb seller	4	6
Local people	30	50

**Table 2.** Families of medicinal plants with two or more species

Families	Number of species
Acanthaceae	3
Amaryllidaceae	2
Anacardiaceae	2
Annonaceae	2
Asteraceae	4
Euphorbiaceae	4
Fabaceae	4
Lamiaceae	2
Moraceae	3
Myrtaceae	3
Oxalidaceae	2
Phyllanthaceae	3
Piperaceae	2
Poaceae	3
Rubiaceae	2
Rutaceae	2
Zingiberaceae	4
Others	27

### Diversity of medicinal plants

The result shows that in Minasatene (Bantimurung-Bulusaraung National Park), there were 74 plant species belonging to 65 genera and 44 families listed as medicinal

plants among the Minasatene people were reported. Out of these, 61 species of plants had more than one usage, while the remaining had just one usage.

Out of the 44 plant families, 17 had more than one species of medicinal plant (Table 2). The top families mentioned by respondents belonged to the families of Asteraceae, Euphorbiaceae, Fabaceae and Zingiberaceae, with four species in each, followed by species belonging to families Acanthaceae, Moraceae, Myrtaceae, Phyllanthaceae and Poaceae with three plant species. The plant genus with the highest number of mentioned species was *Jatropha*, with three species of medicinal plant.

A total of 54 medicinal uses (remedies) were recorded in this study. Thirteen ailments were reported to be treated by a single medicinal plant, while the remaining were by at least two medicinal plants. Various ailments with five or more plant species can be seen in Figure 2 Diabetes is treated by 11 species, including *Andrographis paniculata*, *Tinospora crispa*, and *Vernonia amygdalina*, which have a bitter taste. Followed by coughs and hypertension by 9 species, hypertension by 7 species. This high number of species was used to treat fairly common ailments, such as diarrhea, fever, ulcers, diabetes and respiratory problems (colds and coughs). Some medicinal plants used to treat respiratory problems, such as ginger and lemongrass, are also believed to treat COVID-19.

This study recorded 12 different usable parts (Figure 3A) with leaves as the most dominant part used (47%) followed by fruits (11%). Barks and whole parts (8% each), rhizomes and sap (6% each) were also used to treat human ailments. Seeds (5%), stems (3%), bulbs and roots (2%, each) and flowers and shoots (1%, each) were parts that were occasionally used. The results showed that the majority of remedies were prepared through decoction (51%), and this method was reported to have a higher level of efficacy (Penecilla and Magno 2011). Prior to the application of medicinal plants, turning plants and parts into pastes (16%) and juices (10%), brewing (4%), creating powders (3%) and cooking (2%) were also reported as other processing methods. A few plant species (14%) were identified to be directly consumed without prior handling and processing. However, the application methods of obtained TMPs in this study varied with the type of disease treated. The most frequently reported mode of administration was oral intake (68%), followed by an external application (24%) and rubbing (7%), while only one species (1%) were given by inhalation. Among all the plant species in this study, 46 of them (62%) were collected from the wild, 19 species (26%) from cultivated land and 9 species (12%) from both wild and cultivated land.

### Relationship between knowledge of medicinal plants and socio-demographic factors

To describe the relationship between knowledge of medicinal plants gained by the community and socio-demographic factors, a test of chi-square was applied. The result revealed there is no significant correlation between knowledge of medicinal plant species and gender ( $p = 0.700$ ), age ( $p = 0.669$ ), education ( $p = 0.845$ ) or occupation ( $p = 0.794$ ) of respondents.

*Use Value (UV)*

The UV of each medicinal plant was determined to assess the commonness in the use of each plant in the study area. Results of the study revealed that the UV ranged from 0.02 to 0.95. The 10 highest values of UV are indicated in Figure 4, including *Annona muricata* (0.95), *Chromolaena odorata* (0.93), *Curcuma longa* (0.90), *Zingiber officinale* (0.82), *Orthosiphon aristatus* (0.77), *Phyllanthus niruri* and *Ficus septica* (0.72 for each), *Carica papaya*, *Lannea coromandelica* and *Psidium guajava* (0.70 for each).

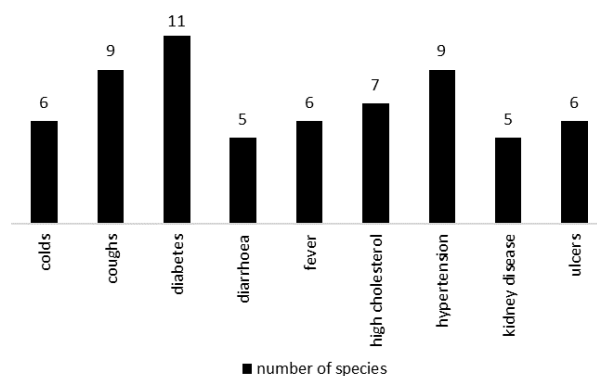
*Fidelity Level (FL)*

To determine the highly preferred medicinal plant species for specific uses FL was employed and the results showed that the FL for each plant species ranged from 35% to 100% (Table 3). Information provided by informants on a particular plant's medical usefulness was regarded as a frequency of citation (FC). Plant species with the highest FL and FC can be seen in Figure 5. *Ficus septica* (toboto) had the highest value based on the number of respondents who indicated the use of this plant species (mentioned by 43 out of 60 respondents).

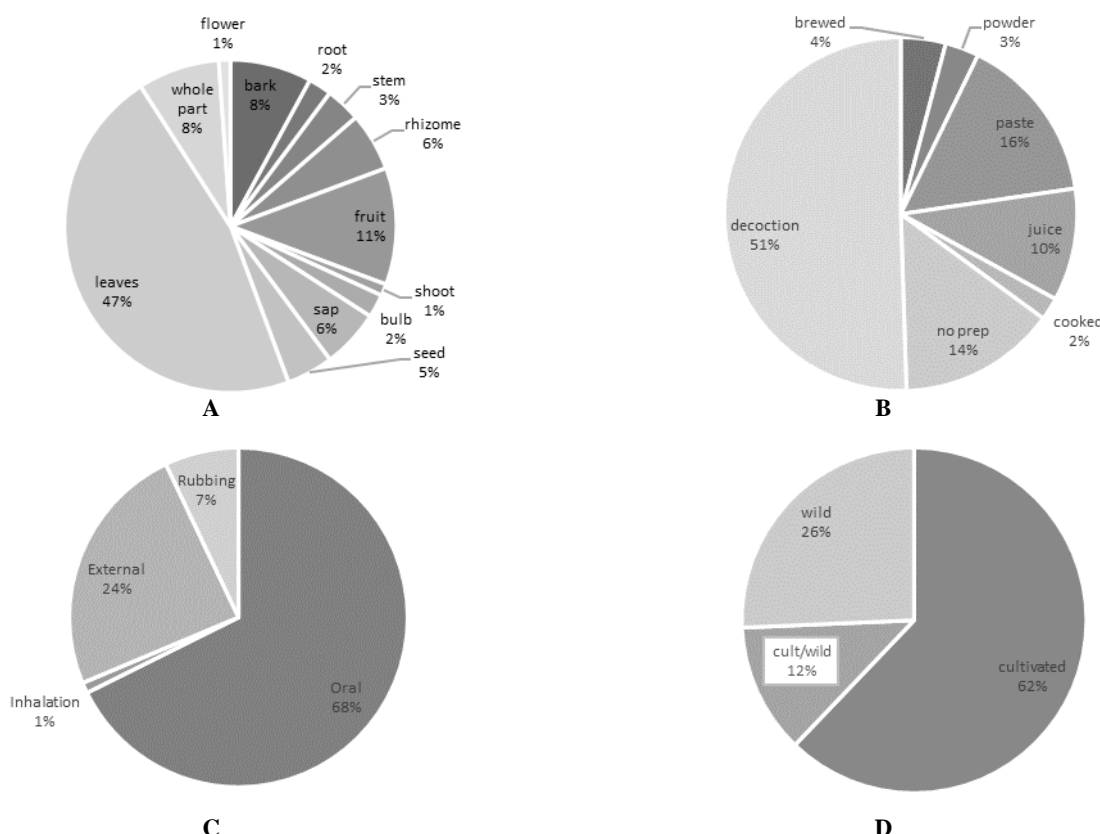
*Informant Consensus Factor (ICF)*

The 54 medicinal uses (remedies) were classified into seven ailment categories (Table 4). The ICF was calculated to determine the level of homogeneity among respondents that used plants to treat each ailment category. This study indicated ICF values ranging from 0,86 to 0,92 per each

ailment category that showed a high level of consensus among the 60 respondents in the multiple uses of the 74 medicinal plant species. The highest ICF value was found in skeletomuscular disorders (0,92), while internal medical diseases were the most frequently treated ailments, with 501 reported from the answers given by the interviewed respondents and 50 medicinal plant species. Meanwhile, the lowest ICF values (0,86) was other diseases (magical and spiritual problems, body odor issue, increase in appetite and breast milk booster).  $N_{ur}$  refers to the number of use reports per ailment, while  $N_i$  is explained as the number of plant species that were reported to address a particular plant-use category.



**Figure 2.** Various ailments with five or more species of medicinal plants in Minasatene (Bantimurung-Bulusaraung National Park), South Sulawesi, Indonesia



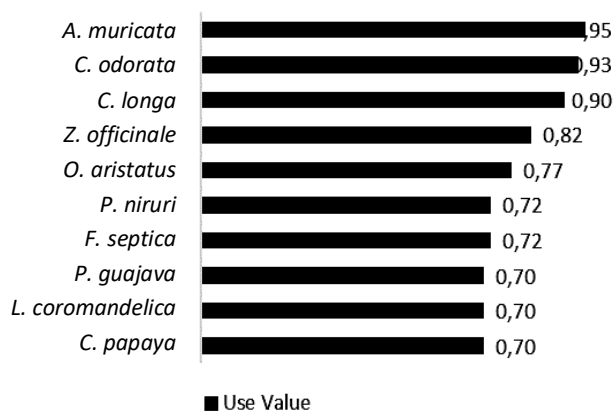
**Figure 3.** Summary of information on medicinal plants used by the local people in Minasatene, Bantimurung-Bulusarung National Park, South Sulawesi, Indonesia based on: A. Plant parts used; B. Modes of preparation; C. Methods of application, and D. Plant origins

**Table 3.** Medicinal Plants used for treating various ailments in Minasatene-Bantimurung Bulusaraung National Park, South Sulawesi, Indonesia. (Ba: bark; Bu: bulb; Fl: flower; Fr : fruit; Le: leaves; Rh: rhizome; Ro: root; Sa: sap; Se: seed; Sh: shoot; St: stem; Wp: whole part; Bre: brewed; Co: cooked, Dec: decoction; Jui: juice; Pas: paste; Raw: no preparation; Ext: external application; Inh: inhalation; Ora: oral intake; Rub: rubbing; C: cultivated; W: wild; MoP: mode of preparation; MoA: method of application; UV: *Use Value*; FL: *Fidelity Level*; Ori: Plant's origins)

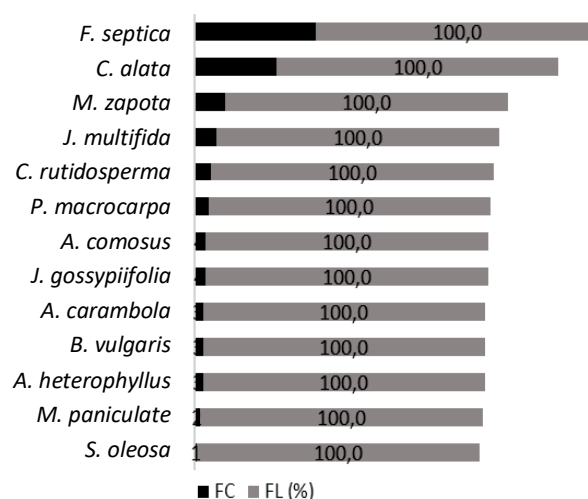
Family	Scientific name	Vernacular name	Type of ailments treated	Part used	MoP	MoA	UV	FL	Ori			
Acanthaceae	<i>Acanthus illicifolius</i> (L.)	Kalli-kalli	Mumps	Le	Dec	Ora	0.38	52.2	C			
			Worm infection	Se	Pow	Ora						
Acoraceae	<i>Andrographis paniculata</i> (Burm.f.) Ness <i>Strobilanthes crispus</i> Blume	Sambiloto Keci beling	Coughs, diabetes, colds	Le	Dec	Ora	0.37	45.5	C			
			Urinary tract infection, back pain	Le	Dec	Ora				0.50	56.7	W
			Diarrhoea	Rh	Dec	Ora						
Amaryllidaceae	<i>Allium ascalonicum</i> (L.) <i>Allium sativum</i> (L.)	Bawang merah Bawang putih	Diarrhoea	Rh	Dec	Ora	0.08	60.0	C/W			
			Magical/spiritual problems	Wp	Raw	Ext						
Anacardiaceae	<i>Lannea coromandelica</i> (Houtt.) Merr.	Tammate	Fever	Bu	Pas	Rub	0.47	75.0	C			
			Colds	Bu	Pas	Inh						
Annonaceae	<i>Mangifera indica</i> (L.) <i>Annona muricata</i> (L.)	Taipa Sirsak	Hypertion	Bu	Dec	Ora	0.32	89.5	C			
			Stye	Bu	Raw	Ext						
Annonaceae	<i>Lannea coromandelica</i> (Houtt.) Merr.	Tammate	Wounds	Ba	Jui	Ext	0.70	50	W			
			Ulcers, haemorrhoids	Ba	Dec	Ora						
Annonaceae	<i>Mangifera indica</i> (L.) <i>Annona muricata</i> (L.)	Taipa Sirsak	High cholesterol, diabetes	Le, Ba	Dec	Ora	0.15	66.7	C			
			High cholesterol, back pain	Le	Dec, Raw	Ora, Ext				0.95	71.9	C
Annonaceae	<i>Annona squamosa</i> (L.)	Serikaya	Cancer	Le	Dec, Raw	Ora	0.17	55.6	C			
			Diarrhoea	Le	Dec	Ora						
Apiaceae	<i>Centella asiatica</i> (L.) Urb.	Tungke-tungke	Hair care	Se	Pow	Rub	0.32	36.8	W			
			Typhus, arthritis, bonchitis	Wp	Dec	Ora						
Apocynaceae	<i>Alstonia scholaris</i> (L.) R. Br.	Rita	Malaria	Ba	Dec	Ora	0.30	55.6	C			
Arecaceae	<i>Cocos nucifera</i> (L.)	Kaluku	Food poisoning	Fr	Raw	Ora	0.30	72.2	C			
			Hair care	Fr	Jui	Rub						
Asphodelaceae	<i>Aloe vera</i> (L.) Burm. f	Lidah buaya	Hair care, burns	Le	Pas	Rub	0.28	82.4	C			
Asteraceae	<i>Chromolaena odorata</i> (L.) R.M.King & H.Rob.	Lahuna	Wounds	Le	Pas	Ext	0.93	83.9	W			
			Ulcers	Le	Dec	Ora						
Asteraceae	<i>Elephantopus scaber</i> (L.) <i>Pluchea indica</i> (L.) Less. <i>Vernonia amygdalina</i> Delile	Lisu-lisu tanah Lamutasa Daun afrika	Ulcers, smallpox, cancer	Wp	Dec	Ora	0.13	50	W			
			Body odor, high cholesterol	Le	Dec	Ora, Rub				0.32	84.2	C/W
			High cholesterol, diabetes	Le	Dec	Ora						
Basellaceae	<i>Anredera cordifolia</i> (Ten.) Steenis	Binahong	Hypertension, ulcers	Le	Dec, Raw	Ora	0.33	35.0	C			
			Bruise	Le	Pas	Ext						
Bromeliaceae	<i>Ananas comosus</i> (L.) Merr.	Nenas	Tonsils	Fr	Jui	Ora	0.07	100	C			
Capparaceae	<i>Cleome rutidosperma</i> DC.	Birosa	Sore eyes	Wp	Pas	Ext	0.10	100	W			
Caricaceae	<i>Carica papaya</i> (L.)	Pepaya	Dengue fever, chills	Le	Dec	Ora	0.70	66.7	C			
Crassulaceae	<i>Bryophyllum pinnatum</i> (Lam.) Oken	Cocor bebek	Fever, boils	Le	Pas	Ext	0.45	74.1	C/W			
Cucurbitaceae	<i>Momordica charantia</i> (L.)	Paria	Coughs	Le	Jui	Ora	0.37	68.2	C;			
			Smallpox	Le	Jui	Ext						

Euphorbiaceae	<i>Aleurites moluccanus</i> (L.) Willd.	Kemiri	Constipation	Se	Dec	Ora	0.10	66.7	C
	<i>Jatropha curcas</i> (L.)	Tangan-tangan kanjoli	Hair care	Se	Dec	Rub			
			Toothache, sprue, oral thrush	Sa	Raw	Ora	0.68	51.2	C
			Magical/spiritual problems	St	Raw	Ext			
	<i>Jatropha gossypifolia</i> (L.)	Jarak merah	Wounds	Sa	Raw	Ext	0.07	100	C
	<i>Jatropha multifida</i> (L.)	Pinisilin	Wounds	Sa	Raw	Ext	0.13	100	C
Fabaceae	<i>Mimosa pudica</i> (L.)	Jabe-jabe	Diabetes, aphrodisiac	Le	Dec	Ora	0.27	50.0	W
			Haemorrhoids	Ro	Pas	Ext			
	<i>Leucaena leucocephala</i> (Lam.) de Wit	Langtoro	Diabetes, worm infection	Ba	Dec	Ora	0.07	50	C/W
	<i>Pterocarpus indicus</i> Willd.	Angsana	Kidney disease	Le	Dec	Ora	0.08	60.0	C/W
			Sprue	Sa	Raw	Ext			
	<i>Senna alata</i> (L.) Roxb.	Kitti-kitti balanda	Ringworm	Le	Pas	Rub	0.48	100	W
Lamiaceae	<i>Orthosiphon aristatus</i> (Blume) Miq.	Kumis kucing	Urinary tract infection, gout	Le	Dec	Ora	0.77	73.9	C
	<i>Plectranthus scutellarioides</i> (L.) R.Br	Miana	Coughs, asthma	Le	Bre	Ora	0.50	80.0	C
Lauraceae	<i>Persea americana</i> Mill.	Alpukat	Hypertension, kidney disease	Le	Dec	Ora	0.20	58.3	C
Malvaceae	<i>Abelmoschus manihot</i> (L.) Medik	Gedi	Cancer, high cholesterol	Le	Dec	Ora	0.38	52.2	C
Meliaceae	<i>Swietenia macrophylla</i> King	Mahoni	Malaria, diabetes	Se	Pow	Ora	0.20	58.3	C
Menispermaceae	<i>Tinospora crispa</i> (L.) Hook. f. & Thomson	Tambara kaleleng	Bone pain, diabetes	St	Dec	Ora	0.25	53.3	W
Moraceae	<i>Artocarpus altilis</i> (Parkinson ex F.A.Zorn) Fosberg	Bakara	Diabetes, high cholesterol	Le	Dec	Ora	0.18	54.5	C
	<i>Artocarpus heterophyllus</i> Lam.	Nangka	Boils	Le	Pas	Ext	0.05	100	C
	<i>Ficus septica</i> Burm.f.	Tobo-tobo	Fever	Le	Raw	Ext	0.72	100	W
Moringaceae	<i>Moringa oleifera</i> Lam.	Keloro	Gout	Le	Dec	Ext	0.60	38.9	C
			Breast milk booster, eyes	Le	Coo	Ora			
Muntingiaceae	<i>Muntingia calabura</i> (L.)	Kersen	Diabetes, hypertension	Le	Dec	Ora	0.68	51.2	W
Musaceae	<i>Musa x paradisiaca</i> (L.)	Unti	Fever	Le	Pas	Ext	0.15	62.5	C/W
			Diarrhoea	Fr	Raw	Ora			
Myrtaceae	<i>Psidium guajava</i> (L.)	Jambu-jambu	Diarrhoea	Fr, Le	Raw	Ora	0.70	92.9	C
			Bronchitis	Fr, Le	Dec	Ora			
	<i>Syzygium cumini</i> (L.) Skeels	Coppeng	Diabetes, diarrhoe	Le, Ba	Dec	Ora	0.15	55.6	C/W
	<i>Syzygium polyanthum</i> (Wight) Walp.	Leko salam	Goat, hypertension	Le	Dec	Ora	0.43	57.7	C
Oxalidaceae	<i>Averrhoa bilimbi</i> (L.)	Belimbing	Fever, hypertension	Fl, Le	Dec	Ora	0.42	56.0	C/W
	<i>Averrhoa carambola</i> (L.)	Belimbing bintang	Heart disease	Fr	Raw	Ora	0.05	100	C
Pandanaceae	<i>Pandanus amaryllifolius</i> Roxb.	Pandan	Nauseous, menstrual cramps, rheumatism	Le	Dec	Ora	0.15	60	C
Phyllanthaceae	<i>Phyllanthus acidus</i> (L.) Skeels	Caramele	Hypertension, nauseous	Le	Dec	Ora	0.07	75.0	C
	<i>Phyllanthus niruri</i> (L.)	Camba-camba sibokoi	Arthritis, kidney disease	Wp	Dec	Ora	0.72	55.8	W
	<i>Sauropus androgynous</i> (L.) Merr.	Katu'	Breast milk booter, fever	Le	Coo	Ora	0.18	54.5	C
			Smallpox	Le	Pas	Ext			
Piperaceae	<i>Peperomia pellucida</i> (L.) Kunth	Lawi-lawi darat	Muscle pain	Wp	Dec	Ora	0.57	55.9	W
			Bruise	Wp	Pas	Ext			
	<i>Piper betle</i> (L.)	Sirih	Leucorrhoea, sore eyes, toothache, coughs	Le	Dec, Bre	Ora, Ext	0.67	37.5	C
Poaceae	<i>Bambusa vulgaris</i> Schrad.	Bambu kuning	Liver	Sh	Dec	Ora	0.05	100	C
	<i>Cymbopogon citratus</i> (DC.) Stapf	Sereh	Arthritis, flatulence, colds	St	Dec	Ora	0.52	45.2	C
	<i>Imperata cylindrica</i> (L.) Raeusch.	Alang-alang	Kidney disease, coughs	Ro	Dec	Ora	0.05	66.7	W

Portulacaceae	<i>Portulaca oleracea</i> L.	Alo	Skin rash	Wp	Pas	Ext	0.13	62.5	W
			Heart disease	Wp	Dec	Ora			
Rhamnaceae	<i>Ziziphus mauritiana</i> Lam.	Bidara	Colds, ulcers	Le	Dec	Ora	0.20	58.3	C
Rubiaceae	<i>Ixora coccinea</i> (L.)	Asoka	Increase in appetite, diarrhoe	Le, Ba	Dec	Ora	0.03	50	C/W
	<i>Morinda citrifolia</i> L.	Baja'	High cholesterol, body odor, arthritis	Fr	Dec, Jui	Ora	0.57	38.2	W
Rutaceae	<i>Citrus aurantiifolia</i> (Christm.) Swingle	Jeruk lemo	Coughs, sprue	Fr	Jui	Ora	0.23	64.3	C
	<i>Murraya paniculata</i> (L.) Jack	Kemuning	Rheumatism	Le	Dec	Ora	0.03	100	C
Sapindaceae	<i>Schleichera oleosa</i> (Lour.) Merr.	Ba'do	Diabetes	Le, Ba	Dec	Ora	0.02	100	
Sapotaceae	<i>Manilkara zapota</i> (L.) P.Royen	Sawo manila	Typhus	Fr	Jui	Ora	0.18	100	C
Solanaceae	<i>Physalis angulata</i> (L.)	Lappo-lappo	Kidney disease, heart disease	Fr, Le	Bre	Ora	0.17	60.0	W
Sterculiaceae	<i>Kleinhovia hospita</i> (L.)	Paliasak	Hypertension, liver	Le	Dec	Ora	0.35	52.4	C
Thymelaeaceae	<i>Phaleria macrocarpa</i> (Scheff.) Boerl.	Mahkota dewa	Colds	Fr	Bre	Ora	0.08	100	C
Verbenaceae	<i>Lantana camara</i> L.	Tai jangang	Skin rash	Le	Pas	Ext	0.55	42.4	W
			Hypertension, coughs, asthma	Le	Dec	Ora			
Zingiberaceae	<i>Kaempferia galanga</i> (L.)	Cakkuru	Increase in appetite, coughs	Rh	Jui	Ora	0.12	71.4	C
	<i>Curcuma longa</i> (L.)	Kunyi	Ulcers, menstrual cramps, constipation	Rh	Jui	Ora	0.90	50	C
			Scars	Rh	Pas	Ext			
	<i>Curcuma xanthorrhiza</i> Roxb.	Temmu	Increase in appetite, liver	Rh	Jui	Ora	0.42	64	C
	<i>Zingiber officinale</i> Roscoe	Jahe	Muscle pain, nauseous, coughs, colds	Rh	Dec	Ora	0.82	36.7	C



**Figure 4.** Medicinal plant species with the highest Use Value (UV) in Minasatene (Bantimurung-Bulusaraung National Park), South Sulawesi, Indonesia



**Figure 5.** Frequency of citation with the highest Fidelity Level of plant species in Minasatene (Bantimurung-Bulusaraung National Park), South Sulawesi, Indonesia

**Table 4.** ICF values by categories for treating ailments in Minasatene (Bantimurung-Bulusaraung National Park), South Sulawesi, Indonesia

Ailment categories	No. of species (N <sub>i</sub> )	No. of use reports (N <sub>ur</sub> )	Informant Consensus Factor (ICF)
Gastrointestinal disorders	18	155	0,89
Dermatological diseases	20	224	0,91
Urogenital and gynaecological problems	11	114	0,91
Skeletomuscular disorders	14	167	0,92
Internal medical diseases	50	501	0,90
Respiratory-nose, ear, oral, eyes, throat problems	32	258	0,88
Others	12	77	0,86

## Discussion

All respondents in this study were indigenous inhabitants of Minasatene who were familiar with medicinal plants and their uses. These respondents were categorized based on their socio-demographic data. Compared with men, women were more interested in medicinal plants, which indicated women were more familiar with the knowledge and utilization of medicinal plants. This is similar to other ethnobotanical research (Nahdi and Kurniawan 2019; Nguyen et al. 2019; Chaachouay et al. 2021), where women were the majority of respondents. This is because women are usually in charge of health care in their households (Nguyen et al. 2019). The proportions in age categories indicated that older people tended to have more experience in the use of medicinal plants. Older women in the Amazon are also known to be more familiar with and use more medicinal plants compared to younger women (Wayland and Walker 2014). Most of the respondents had graduated from high school, while their occupations were traditional healers, unemployed/housewives, laborers/farmers, civil servants, private employees and sellers/traders.

Table 3 shows that there were 74 species belonging to 65 genera and 44 families listed as medicinal plants. The highest number of plants belonged to the genus *Jatropha*

with three species of medicinal plants. Of these species, *J. curcas* had the most reported one for treating ailments, one of which was for magical or spiritual problems. The stem of the plant is believed to exorcise demons. Other species of the genus *Jatropha* was *J. gossypifolia* and *J. multifida*, which were used for wound healing. The importance of *Jatropha* was also reported to have biological benefits such as anti-microbial, anti-infectious and healing properties by other study reports (Xavier-Santos et al. 2018; Vieira et al. 2021).

A total of 54 medicinal uses (remedies) were recorded in this study. Diabetes had the highest number of plant species because local people believed that plants with bitter tastes were effective at reducing blood sugar levels. This is similar to research by Chen et al. (2015), which stated that herbal medicines with bitter flavor and cold properties have multiple anti-diabetic mechanisms. A large number of species were used to treat respiratory problems (colds and coughs) which were believed to be symptoms of COVID-19. Respondents believe that *Zingiber officinale* (ginger) can be used to treat COVID-19 symptoms, such as colds and coughs. This is similar to another study carried out in Peru (Villena et al. 2021) and Thailand (Phumthum et al. 2021). Another medicinal plant that was used to treat COVID-19 was *Cymbopogon citratus* (lemongrass). It has

been reported to contain immune-boosting properties (Oladel et al. 2020).

In ethnobotanical studies, different plant parts are used to treat different diseases because the components in each part may have different effects (Nguyen et al. 2019). Plant parts can accumulate diverse and exciting natural components that act as factories, producing and offering substantial pharmaceutical potential (Jadid et al. 2020). Figure 3A shows that leaves were the most common plant material used in Minasatene (Bantimurung-Bulusaraung National Park). Leaves are the major plant component commonly used in herbal medicine in Indonesia (Mustofa et al. 2020; Fathir et al. 2021) and other countries (Chaachouay et al. 2020; Islam et al. 2020), as this part can be easily found in tropical regions. It's also known to be easy to handle and more sustainable compared to other parts of plants in terms of preservation. Removing the leaves within reasonable limits does not risk the plant's life compared to collecting the stem and root (Jadid et al. 2020). For some plants, only one part can be used, but for some other plants, all parts can be used. For example, the flower and leaves of starfruit (*Averrhoa bilimbi*) can be used to treat fever. Also, for *Alstonia scholaris*, the sap produced can treat toothaches, while the bark is used for treating malaria.

There were various modes of preparation before using plants as remedies in Minasatene. Plants were brewed, cooked, made into decoctions, juices, pastes and powders or as fresh. The results showed that the majority of remedies were prepared from decoction (Figure 3B). This method has been reported to have a higher level of efficacy due to its fast absorption process (Penecilla and Magno 2011). Some people ingested decoctions orally, but some were smeared on the body. A unique mode of preparation was recorded for *Cleome rutidosperma*. The plant parts were kneaded or crushed and the resulting paste was put in a bottle and brought close to the eye. The plants would secrete oil that would heal the eyes, according to respondents. This method was also reported in Sumatra (Ministry of Environment and Forestry, 2015).

The application methods in this study varied with the type of disease treated. The most frequent was oral ingestion (Figure 3C). This is similar to previous studies (Nguyen et al. 2019; Chaachouay et al. 2021; Fathir et al. 2021). *Allium cepa* was discovered to be inhaled to treat colds. Extracts of *A. cepa* have been shown to have relieving effects on obstructive respiratory diseases (Beigoli et al. 2021).

The plant species in Minasatene were collected from the wild, cultivated or a combination of both (Figure 3D). Medicinal plants collected in the wild, such as from forests, fields and ponds, were available to any local people who wanted to use them. However, medicinal plants obtained from yards or home gardens were grown for respondents' own use. This is similar to another study in Vietnam, where the medicinal plants obtained from home gardens (cultivated) were primarily grown for food preparation and for marketing, such as stimulants and ornaments (Nguyen et al. 2019).

In this study, there was no significant relationship between socio-demographic factors and knowledge of medicinal plants. This might be related to the length of exposure to experiences, where most respondents had inherited knowledge of medicinal plants from using them in the same ways as their ancestors. Therefore, data was not differentiated in terms of gender, age, education and occupation. In contrast, however, several studies have indicated that gender (Bano et al. 2014; Wiryono et al. 2019), age (Bano et al. 2014; Pérez-Nicolás et al. 2017; Wiryono et al. 2019), education (Bano et al. 2014; Pérez-Nicolás et al. 2017; Rahayu et al. 2020) and occupation (Moke et al. 2021; Rahayu et al. 2020) do influence the transmission of traditional knowledge about medicinal plants' therapeutic uses in many ethnic communities.

The plant species with the highest UV was commonly known and available in the study area, while plants had lower UVs if respondents had less knowledge about them. In the study area, *A. muricata* is used to treat high cholesterol, back pain and cancer. Its extracts and phytochemicals have been characterized as antioxidant, anti-microbial, anti-inflammatory, insecticidal, larvicidal and cytotoxic to cancer cells (Gavamukulya et al. 2017). *Curcuma longa* is used to treat wounds and ulcers. The leaves of this plant are a rich source of flavonoids and have been proven to help enhance wound-healing activities. Therefore, its activity as a wound-healing agent for superficial and internal wounds, such as ulcers, should be further investigated (Bhuyan et al. 2019). *Curcuma longa* or turmeric is one species in the genus *Curcuma*, widely known as a valuable material in modern pharmacy. Curcumin is the main phenolic constituent of the genus, especially in the turmeric rhizome. It has anti-inflammatory, anti-mutagenic, anti-bacterial, anti-cancer, expectorant and hepatoprotective properties (Gupta et al. 2012; Krup et al. 2013; Mondal et al. 2015). This study found that local people use turmeric to treat ulcers, menstrual cramps, constipation and scars. We also found that people in Minasatene use *Z. officinale* for respiratory disease (colds and coughs), nausea and muscle pain. It has been reported to have similar use in Yogyakarta and Vietnam (Nahdi and Kurniawan 2019; Nguyen et al. 2019). The use of *O. aristatus* to treat urinary tract infections is in line with the research of Nisa et al. (2021), who found that *O. aristatus* is the plant most often used to treat urinary tract infections in several areas of eastern Indonesia.

*Fidelity Level* is useful in determining which plants are most commonly utilized to treat specific diseases (Khan et al. 2014). The higher the FL, the more people can be said to trust a medicinal plant to treat specific diseases; on the other hand, the lower the FL, the fewer people seem to trust medicinal plants. Figure 5 shows that *Ficus septica* (tobo-tobo) gets the highest value, based on the number of respondents who indicated the use of a plant species (mentioned by 43 out of 60 respondents). Respondents believe tobo-tobo can treat fever. Huang et al. (2017) described a variety of uses for tobo-tobo, including treating dengue fever.

The *Informant Consensus Factor* was used to evaluate the homogeneity of the use of medicinal plants. Higher values suggested that respondents utilized certain plant species to treat a particular disease, whereas low values indicated low agreement on plant use for a specific disease (Elfrida et al. 2021). The highest ICF value was found in skeletomuscular disorders. This is quite different from other study results, where gastrointestinal was the most cited disease category (Nguyen et al. 2019; Bhagawan and Kusumawati 2021).

In summary, the present ethnobotanical study of medicinal plant species among traditional healers, elderly people, herb sellers and local people in Minasatene (Bantimurung-Bulusaraung National Park) reveals a rich diversity of medicinal plants. The people in the area reported using 74 species of medicinal plants derived from 65 genera and 44 families. The plant species were believed to treat 54 different ailments in seven categories. Leaves were the most popular plant part used. The most common methods of preparation and application of medicinal plants were decoction and oral intake. During data analysis, it was discovered that the application of ethnobotanical indices such as *Use Value* (UV), *Fidelity Level* (FL), and *Informant Consensus Factor* (ICF) validated the effectiveness of the ethnobotanical practices of local people; as such, they may be used to further support plant conservation and pharmacological studies for new drug discovery. Furthermore, medicinal plants with high scores of UV and FL in this study warrant future additional biochemical analysis to determine their bioactive substances, whereas those with low scores can be promoted more. Finally, the information we gathered may assist local communities in producing, market and profit from medicinal plants, thereby significantly increasing the local society's collective revenue.

## ACKNOWLEDGEMENTS

We would like to thank all the people from Minasatene Resort for participating in this study and sharing all their information. We would also like to thank the National Research and Innovation Agency Republic of Indonesia (BRIN) and P2CIKU Universitas Hasanuddin, Indonesia, for funding the study.

## REFERENCES

- Allkin B. 2017. Useful Plants-Medicines. In: Willis KJ (ed). State of the World's Plants 2017. Royal Botanical Gardens, Kew. London.
- Azis S, Zubaidah S, Mahanal S, Batoro J, Sumitro SB. 2020. Local knowledge of traditional medicinal plants use and education system on their young of Ammatoa Kajang Tribe in South Sulawesi, Indonesia. *Biodiversitas* 21 (9): 3989-4002. DOI: 10.13057/biodiv/d210909.
- Bano A, Ahmad M, Hadda TB, Saboor A, Sultana S, Heinrich M, Ankli A, Frei B, Weimann C, Sticher O. 1998. Medicinal plants in Mexico Healers' consensus and cultural importance. *Social Science & Medicine* 47(11): 1859-1871. DOI: 10.1016/s0277-9536-00181-6.
- Beigoli S, Behrouz S, Memarzia A, Ghasemi SZ, Boskabady M, Marefati N, Kiania F, Khazdair MR, El-Seedi H, Boskabady MS. 2021. Effect of *Allium cepa* and its constituents on respiratory and allergic disorders: A comprehensive review of experimental and clinical evidence. *Evid-Based Complement Altern Med* 5554259. DOI: 10.1155/2021/5554259.
- Bhagawan WS, Kusumawati D. 2021. Ethnobotanical medicinal plant study of Tengger Tribe in Ranu Pani Village, Indonesia. Proceedings of the the 3rd International Conference on Education & Social Science Research (ICESRE). DOI: 10.2139/ssrn.3865725.
- Bhuyan M, Deb P, Dasgupta D. 2019. *Chromolaena odorata*: As nature's wound healer. *Intl J Curr Pharm Res* 11 (4): 63-65. DOI: 10.22.159/ijcpr.2019v11i4.34955.
- Chaachouay N, Douira A, Zidane L. 2021. Herbal Medicine Used in the Treatment of Human Diseases in the Riff, Northern Morocco. *Arab J Sci Eng* 47(1): 131-153. DOI: 10.1007/s13369-021-05501-1.
- Ceto AA, Heinrich M. 2011. From the field into the lab: useful approaches to selecting species based on local knowledge. *Front Pharmacol* 2 (20). DOI: 10.3389/fphar.2011.00020.
- Chaachouay N, Douira A, Zidane L. 2021. Herbal medicine used in the treatment of human diseases in the Riff, Northern Morocco. *Arab J Sci Eng* 47 (1): 131-153. DOI: 10.1007/s13369-021-05501-1.
- Chan KW, Wong VT, Tang SCW. 2020. COVID-19: An update on the epidemiological, clinical, preventive and therapeutic evidence and guidelines of integrative Chinese-Western medicine for the management of 2019 novel coronavirus disease. *Am J Chin Med* 48 (3): 737-762. DOI: 10.1142/S0192415X20500378.
- Chen H, Jing G, Pang B, Zhao L, Tong X. 2015. Review Article: Application of herbal medicines with bitter flavor and cold property on treating diabetes mellitus. *Evid-Based Complement Altern Med*. DOI: 10.1155/2015/529491.
- Elfahmi, Woerdenbag HJ, Kayser O. 2014. Jamu: Indonesian traditional herbal medicine towards rational phytopharmacological use. *J Herbal Med* 4 (2): 51-73. DOI: 10.106/j.hermed.2014.01.002.
- Elfrida, Tarigan NS, Suwardi AB. 2021 Ethnobotanical study of medicinal plants used by community in Jambur Labu Village, East Aceh, Indonesia. *Biodiversitas* 22 (7): 2893-2900. DOI: 10.13057/biodiv/d220741.
- Fathir A, Haikal M, Wahyudi D. 2021. Ethnobotanical study of medicinal plants used for maintaining stamina in Madura ethnic, East Java, Indonesia. *Biodiversitas* 22 (1): 386-392. DOI: 10.13057/biodiv/d220147.
- Gavamukulya Y, Wamunyokoli F, El-Shemy HA. 2017. *Annona muricata*: Is the natural therapy to most disease conditions including cancer growing backyard? A systematic review of its research history and future prospects. *Asian Pac J Trop Med* 10 (9): 835-848. DOI: 10.1016/j.apjtm.
- Gupta SC, Patchva S, Koh W, Aggaewal BB. 2012. Discovery of *curcumin*, a component of golden spice, and its miraculous biological activities. *Clin Exp Pharmacol Physiol* 39: 283-299. DOI: 10.1111/j.1440-1681-2011-05648.x.
- Heinrich M, Ankli A, Frei B, Weimann C, Sticher O. 1998. Medicinal plants in Mexico: Healers' consensus and cultural importance. *Soc Sci Med* 47 (11): 1859-1871. DOI: 10.1016/S0277-9536(98)00181-6.
- Huang NC, Hung WT, Tsai WL, Lain FY, Lin YS, Huang MS, Chen JJ, Lin WY, Weng JR, Chang TH. 2017. *Ficus septica* plant extracts for treating Dengue virus in vitro. *PeerJ* 5: e3448. DOI: 10.7717/peerj.3448.
- Islam ATMR, Hasan M, Islam T, Rahman A, Mitra S, Das SK. 2020. Ethnobotany of medicinal plants used by Rkaghine indigenous communities in Patuakhali and Barguna District of Southern Bangladesh. *J Evid Based Integr Med* 25: 1-27. DOI: 10.1177/2515690X20971586.
- Jadid N, Kurniawan E, Himayani C, Andriyani, Prasetyowati I, Purwani KI, Muslihatin W, Hidayati D, Tjahjaningrum I. 2020. An ethnobotanical study of medicinal plants used by the Tengger Tribe in Ngadisari Village, Indonesia. *PLoS one* 15 (7): e0235886. DOI: 10.1371/journal.pone.0235886.
- Karimi A, Majlesi M, Rafieian KM. 2015. Herbal versus synthetic drugs: beliefs and facts. *J Nephroarmacol* 4 (1): 27-30.
- Khan I, Abdelsalam NM, Fouad H, Tariq A, Ullah R, Adnan M. Application of ethnobotanical indices on the use of traditional medicines against common diseases. *Evid Based Complement Alternat Med* 635371. DOI: 10.1155/2014/635371.
- Krishnan S. 2016. Traditional herbal medicines-A review. *IJRAR* 5 (4): 611-614.
- Krup V, Prakash HL, Harini. 2013. Pharmacological activities of turmeric (*Curcuma longa* L.). A review. *J Tradit Med Clin Naturopathy* 2: 133. DOI: 10.4172/2167-1206.1000133.

- Li Y, Liu X, Guo L, Zhong D, Zhang Y, Clark M, Jin R. 2020. Traditional Chinese herbal medicine for treatment novel coronavirus (COVID-19) pneumonia: protocol for a systematic review and meta-analysis. *Systematic Reviews* 9(1):75. DOI: 10.1186/s13643-020-01343-4.
- Lim XY, The BP, Tan TYC. 2021. Medicinal plants in COVID-19: potential and limitations. *Front Pharmacol* 12: 611408. DOI: 10.3389/fphar.2021.611408.
- Lukman M, Wahyuddin E, Subehan, Manggau MA. 2014. Cytotoxic effect of four Makassar medicinal plants on human cervical cell lines and its selectivity. *Journal of Chemical and Pharmaceutical Research* 6(10): 851-855.
- Mahomoodally MF. 2013. Traditional medicines in Africa: An Appraisal of ten potent African medicinal plants. *Evid Based Complement Altern Med* 617459. DOI: 10.1155/2013/617459.
- Malini DM, Madihah M, Kusmoro J, Kamilawati F, Iskandar J. 2017. Ethnobotanical study of medicinal plants in Karawangi, Distric of Cianjur, West Java. *Biosaintifika* 9 (2): 345-356. DOI: 10.15294/biosaintifika.v9i2.5756.
- Ministry of Environment and Forestry. 2015. A guide book for invasive alien plant species in Indonesia. Research, Development and Agency, Bogor. [Indonesian]
- Ministry of Environment and Forestry. 2016. Rencana Pengelolaan Jangka Panjang Taman Nasional Bantimurung Bulusaraung Periode Tahun 2016-2025. Maros. [Indonesian]
- Ministry of Forestry. 2004. Ministry of Forestry Regulation Number SK.398/Menhut-II/2004 concerning Land Use Change. Ministry of Forestry, Jakarta. [Indonesian]
- Ministry of National Development planning. 2016. Indonesian Biodiversity Strategy and Action Plan 2015-2020. Indonesian Government, Jakarta. [Indonesian]
- Moke EG, Umukoro EK, Asiwe JN, Omogbiya AI, Erhirhie EO, Ben-Azu B, Anieh FU. 2021. Herbal medicine: Education and occupation influences its practice among residents of Port Harcourt, South Nigeria. *Intl J Pharm Phytopharm Res* 11 (2): 38-44. DOI: 10.51847/ojxVsCMh9y.
- Mondal K, Arghya P, Salman H. 2015. Ethnobiological and traditional medicine practices in Burdwan District, West Bengal, India. *Intl J Ethnobiol Ethnomed* 19 (1): 1-8.
- Mustofa FI, Rahmawati N, Aminullah. 2020. Medicinal plants and practices of Rongkong traditional healers in South Sulawesi, Indonesia. *Biodiversitas* 21 (2): 642-651. DOI: 10.13057/biodiv/d210229.
- Nahdi MS, Kurniawan AP. 2019. Ethnobotanical study of medicinal plants in karst environment in Gunung Kidul, Yogyakarta, Indonesia. *Nusantara Biosci* 11 (2): 133-141. DOI: 10.13057/nusbiosci/n110204.
- Nguyen TS, Xia NH, Chu TV, Sam HV. 2019. Ethnobotanical study on medicinal plants in traditional markets of Son La Province, Vietnam. *For Soc* 3 (2): 171-192. DOI: 10.24259/fs.v3i2.6005.
- Nisa U, Astana PR, Triyono A, Ardiyanto D, Fitriani U, Zulkarnain Z, Novianto F, Jannah WV. 2021. Ethnobotanical study of medicinal plants used for treating urinary tract problems in eastern Indonesia. *IOP Conf. Ser.: Earth Environ. Sci* Vol 905 012119.
- Oladel JO, Ajayi EI, Oyeleke OM, Oladele OT, Olowookere BD, Adeniyi BM, Oyewole OI, Oladiji AT. 2020. A systematic review on COVID-19 pandemic with soecial emphasis on curative potentials of Nigeria based medicinal plants. *Heliyon* 6 (9): e04897. DOI: 10.1016/j.heliyon.2020.e04897.
- Pandiangan D, Silalahi M, Dapas F, Kandau F. 2019. Diversity of medicinal plants and their uses by the Sanger Tribe of Sangihe Islands, North Sulawesi, Indonesia. *Biodiversitas* 20 (3): 611-621. DOI: 10.13057/biodiv/d200301.
- Panyod S, Ho CT, Sheen LY. 2020. Dietary therapy and herbal medicine for COVID-19 prevention: A review and perspective. *J Tradit Complement Med* 10: 420-427.
- Penecilla GL, Magno CP. 2011. Antibacterial activity of extracts of twelve common medicinal plants from the Philipphines. *J Med Plants Res* 5 (16): 3975-3981. DOI: 10.5897/JMPR/.
- Pérez-Nicolás M, Vibrans H, Manzanares AR, Saynes-Vasquez A, Luna-Cavazos M, Flores-Criz M, Lira-Saade R. 2017. Patterns of knowledge and use of medicinal plants in Santiago Camotlan, Oaxaca, Mexico. *Econ Bot* 71: 209-223. DOI: 10.1007/s12231-017-9384-0.
- Phumthum M, Nguanchoo V, Balsev H. 2021. Medicinal plants used for treating mild Covid-19 symptoms among Thai Karen and Hmong. *Front Pharmacol* 12: 699897. DOI: 10.3389/fphar.2021.699897.
- Puspitaningtyas DM. 2017. Orchid inventory in Bantimurung Bulusaraung National Park, South Sulawesi, Indonesia. *Biodiversitas* 18 (1): 341-350. DOI: 10.13057/biodiv/d180144.
- Rahayu YYS, Araki T, Rosleine D. 2020. Factors affecting the use of herbal medicines in universal health coverage system in Indonesia. *J Ethnopharmacol* 260: 112974. DOI: 10.1016/j.jep.2020.112974.
- Rastogi S, Pandey DN, Singh RH. 2022. COVID-19 pandemic: A pragmatic plan for Ayurveda intervention. *J Ayurveda Integr Med* 13(1): 100312. DOI: 10.1016/j.jaim.2020.04.002.
- Siburian R. 2010. Pengelolaan Taman Nasional Bantimurung-Bulusaraung dan dampaknya terhadap masyarakat lokal. *Jurnal Masyarakat dan Budaya* 12 (1): 119-144. [Indonesian]
- Silalahi M, Supriatna J, Walujo EB, Nisyawati. 2015. Local knowledge of medicinal plants in sub-ethnic Batak Simalungun of North Sumatra, Indonesia. *Biodiversitas* 16 (1): 44-54. DOI: 10.13057/biodiv/d160106.
- Syamsiah SFH, Mu'nisa A, Jumadi O. 2016. Study on medicinal plants used by Ethnic Mamuju in West Sulawesi. *J Trop Crop Sci* 3 (2): 42-48. DOI: 10.29244/jtcs.3.2.43-48.
- Vellingiri B, Jayaramayya K, Iyer M, Narayanasamy A, Govindasamy V, Giridharan B, Ganesan S, Venugopal A, et al. 2020. COVID-19: A promising cure for the global panic. *Sci Total Environ* 10 (725): 138277. DOI: 10.1016/j.scitotenv.2020.138277.
- Vieira DS, Oliveira FT, Garcia SJA, Silva DP, Bernardo THL, Bastos MLA. 2021. Biological activities: anti-infectious, antioxidant and healing of the vegetable species *Jatropha multifida*. *Ref Bras Enferm* 74 (2): 1-9. DOI: 10.1590/0034-7167-2020-0451.
- Wayland C, Walker LS. 2014. Length of residence, age and patterns of medicinal plant knowledge and use among women in the urban Amazon. *J Ethnobiol Ethnomed* 10 (1): 25. DOI: 10.1186/1746-4269-10-25.
- Wiryo, Wanandi Y, Ilahi AK, Deselina, Senoaji G, Siswahyono. 2019. The local knowledge of the plant names and uses by Semende tribe people in Kaur District, Bengkulu Province, Indonesia. *Biodiversitas* 20 (3): 754-761. DOI: 10.13057/biodiv/d200320.
- Xavier-Santos JB, Félix-Silva J, Passos JGR, Gomes JAS, Fernandes JM, Garcia VB, de Araujo-Junior RF, Zucolotto SM, Silva-Junior AA, Fernandes-Pedrosa MF. 2018. Development of an effective and safe topical anti-inflammatory gel containing *Jatropha gossypifolia* leaf extract: Results from a pre-clinical trial in mice. *J Ethnopharmacol* 227: 268-278. DOI: 10.1016/j.jep.2018.09.007.
- Yuan H, Ma Q, Ye L, Piau G. 2016. The Traditional Medicine and Modern Medicine from Natural Products. *Molecules* 21(5):559. DOI:10.3390/molecules21050559.
- Yudharaj P, Shankar M, Sowjanya R, Sireesha B. 2016. Importance and Use of Medicinal Plants-An overview. *Intl J Preclinical Pharm Res* 7 (2): 67-73.
- Zenderland JRH, Rainer WB, Narel YPZ, Shalva S, Zaal K, David K, David T, Manana K, Ketevan B. 2019. The use of "Use Value": Quantifying importance in ethnobotany. *Econ Bot* 73: 293-303. DOI: 10.1007/s12231-019-09480-1.
- Zikri M, Sumartono E, Novanda RR, Parwito, Purnomo A, Busro, Supriyono. 2018. Ethnobotany of medical plants by Rejang Selupu Ethnic. *J Phys: Conf* 1114: 012130. DOI: 10.1088/1742-6569/1114/1/012130.



Search: biodiversitas



99+

Compose

Mail

Inbox 334

Chat

Starred

Spaces

Snoozed

Sent

Meet

Drafts 3

More

Labels

Manajemen satwa ... 14

Rekam Jejak\_Exchange ...



... payment. With this email, we attach the proof of payment and the revised article through on line system. Thank you very much and looking forward to hearing from you soon.

Best regards,  
Risma Maulany

2 Attachments • Scanned by Gmail



Reply Forward



Q biodiversitas



99+

Compose

Mail

Inbox 343

Chat

Starred

Snoozed

Spaces

Sent

Drafts 3

Meet

More

Labels

Manajemen satwa ... 14

Rekam Jejak\_Exchange ...

[biodiv] Editor Decision External Inbox x



Smujo Editors <support@mail.smujo.id>  
to IIN, me, NASRI, PUTU

Wed, Nov 16, 2022, 5

IIN PERTIWI A. HUSAINI, RISMA ILLA MAULANY, NASRI NASRI, PUTU OKA NGAKAN:

The editing of your submission, "Diversity and use of traditional medicinal plant species in Bantimurung-Bulusaraung N complete. We are now sending it to production.

Submission URL: <https://smujo.id/biodiv/authorDashboard/submission/12038>

[Biodiversitas Journal of Biological Diversity](#)



Risma Maulany <risma.maulany@unhas.ac.id>  
to Smujo, IIN, NASRI, PUTU

Wed, Nov 16, 2022, 8:



Q biodiversitas



99+

Compose

Mail

Inbox 343

Chat

Starred

Spaces

Snoozed

Sent

Meet

Drafts 3

More

Labels

Manajemen satwa ... 14

Rekam Jejak\_Exchange ...

[biodiv] Editor Decision External Inbox x



Nor Liza <smujo.id@gmail.com>  
to IIN, me, NASRI, PUTU

Tue, Nov 1, 2022, 10:

IIN PERTIWI A. HUSAINI, RISMA ILLA MAULANY, NASRI NASRI, PUTU OKA NGAKAN:

We have reached a decision regarding your submission to Biodiversitas Journal of Biological Diversity, "Diversity and u plant species in Bantimurung-Bulusaraung National Park, Indonesia".

Our decision is to: Accept Submission

[Biodiversitas Journal of Biological Diversity](#)

Thank you for informing me.

Thank you for your response.

Thank you for the information.



Q biodiversitas



99+

Compose

Mail

Inbox 343

Chat

Starred

Spaces

Snoozed

Sent

Meet

Drafts 3

More

Labels

Manajemen satwa ... 14

Rekam Jejak\_Exchange ...

[biodiv] Editor Decision External Inbox x



Smujo Editors <smujo.id@gmail.com>  
to Iin, me, Oka, Nasri

Thu, Sep 22, 2022, 8

Iin Pertiwi A. Husaini, Risma, Oka, Nasri:

We have reached a decision regarding your submission to Biodiversitas Journal of Biological Diversity, "Diversity and u  
plant species in Bantimurung-Bulusaraung National Park, Indonesia".

Our decision is: Revisions Required

-----  
Reviewer A:

Dear Editor,

I have come through the manuscript and commented on a few of them so that the author/s correct it as per my sugges

# 39\_Maulany\_lin\_Biodiversitas\_2 022.pdf

*by*

---

**Submission date:** 01-Jan-2023 07:51AM (UTC+0700)

**Submission ID:** 1987693519

**File name:** 39\_Maulany\_lin\_Biodiversitas\_2022.pdf (964.5K)

**Word count:** 8594

**Character count:** 45216

## Diversity and use of traditional medicinal plant species in Bantimurung-Bulusaraung National Park, Indonesia

IIN PERTIWI A. HUSAINI<sup>1,3</sup>, RISMA ILLA MAULANY<sup>2,\*</sup>, NASRI NASRI<sup>2</sup>, PUTU OKA NGAKAN<sup>2</sup>

<sup>1</sup>Faculty of Forestry, Universitas Hasanuddin. Jl. Perintis Kemerdekaan Km. 10, Makassar 90245, South Sulawesi, Indonesia. Tel./fax.: +62-411-588566,

\*email: risma.maulany@unhas.ac.id

<sup>2</sup>Forest Conservation Department, Forestry Faculty, Universitas Hasanuddin. Jl. Perintis Kemerdekaan Km. 10, Makassar 90245, South Sulawesi, Indonesia

<sup>3</sup>Research Center for Plant Conservation, Botanic Gardens and Forestry-National Research and Innovation Agency. Jl. Ir. H. Juanda No.13, Bogor 16122, West Java, Indonesia

Manuscript received: 24 August 2022. Revision accepted: 24 October 2022.

**Abstract.** Husaini IPA, Maulany RI, Nasri N, Ngakan PO. 2022. Diversity and use of traditional medicinal plant species in Bantimurung-Bulusaraung National Park, Indonesia. *Biodiversitas* 23: 5539-5550. The people of Minasatene (Pangkep District) in Bantimurung-Bulusaraung National Park, South Sulawesi (Indonesia) have used traditional medicinal plants for many centuries. However, this local knowledge has not been recorded. This study aims to examine the diversity of plant species used to treat various ailments in the area. A set of semi-structured questionnaires was distributed to 60 respondents, consisting of traditional healers, elderly people, herb sellers and local people of Minasatene. This was used to obtain a demographic profile, vernacular names of plants and their uses, plant parts used, modes of preparation and methods of application. The diversity and use value of the medicinal plant species in a traditional context were descriptively analyzed. The data were further extrapolated using Use Value (UV) to analyze the relative importance of plant species based on the number of uses; Fidelity Level (FL) to determine the specific uses of each plant species and preference over other species, and Informant Consensus Factor (ICF) to investigate an agreement between each group of diseases and related remedies. The study reveals that there were 74 species of medicinal plants belonging to 65 genera and 44 families being used as traditional medicines, which have been known to treat 54 ailments. Among the plant species, soursop (*Annona muricata*) had the highest UV (0.95), while the fig tree species, *Ficus septica* (100%) had the highest FL with the most frequent citation. From the data gained, it was found that skeletomuscular disorders had the highest ICF value (0.92).

**Keywords:** Bantimurung-Bulusaraung National Park, diversity, ethnobotany, Minasatene, traditional medicinal plants

### INTRODUCTION

Indonesia is a mega-biodiversity country known for its rich flora with 30,000-40,000 species identified (Ministry of National Development Planning 2016; Atik et al. 2019). Of these, only tiny percentages are known for their potential and benefits to the community, of which, medicinal herbs are the one. About 6,000 plant species in Indonesia are known to have potential as herbal medicine (Elfahmi et al. 2014). Recently, the use of medicinal plants has been increasing in the community and has become one of the alternative treatments (Rahayu et al. 2020). People tend to use medicinal plants due to the lack of negative side effects (Karimi et al. 2015) and their accessibility and low cost (Mahomoodally 2013; Malini et al. 2017), compared to modern drugs.

Medicinal plants have been found as an important contributor to the pharmaceutical, agricultural and food industries (Krishnan 2016). Plants were used as a basis of some of the most important drugs, such as diuretic activity in *Mangifera indica*, antiparasitic activity in *Carica papaya*, and anti-inflammatory activity in *Curcuma longa* (Yudharaj et al. 2016). During the COVID-19 pandemic, medicinal plants were also chosen as one of many interventions and explored across the world to find an

effective as well as a complimentary cure for the disease alongside conventional treatments (Lim et al. 2021). Many studies have revealed that the use of medicinal plants for COVID-19 cases has assisted in prevention, reducing the severity of the disease and alleviating its effects (Chan et al. 2020; Panyod et al. 2020; Vellingiri et al. 2020). Here, the role of medicinal plants should not be underestimated.

Ethnobotany knowledge about medicinal plants has long been inherited from generation to generation (Yuan et al. 2016; Zikri et al. 2018; Li et al. 2020; Rastogi et al. 2020). But this traditional knowledge is currently facing the threat of disappearance due to loss of use in a society competing with modern drugs. This shift is related to changes in communities going through modernization (Malini et al. 2017), the death of the holders of knowledge of medicinal plants, which belongs only to older persons (>60 years) and traditional shamans or healers (Silalahi et al. 2015), as well as the lack of people who cultivate medicinal plants (Syamsiah et al. 2016).

Many people around the world still depend on the use of medicinal plants for their primary healthcare, in particular around Africa, some parts of Asia and Central and South America (Ailkin 2017). Different tribes across the world have different medicinal plant species. This has caused differences in procedures for the utilisation of

medicinal plants, species of plants used as medicinal herbs, parts of plants used, diseases treated, plant processing and application (Syamsiah et al. 2016). As many have attempted to open doors for the use of medicinal plants, few plant species have been identified and explored. Like other regions, people in Sulawesi (Indonesia) also have a traditional medicine system known as *Lontaraq Pabbura* (Lukman et al. 2014). And, people in Sulawesi use plants from the forest as traditional medicines to maintain their health and treat a number of diseases (Mustofa et al. 2020; Azis et al. 2020; Pandiangan et al. 2019). However, there has been no documented data that reports on TMPs being used in treating ailments among the people of Minasatene.

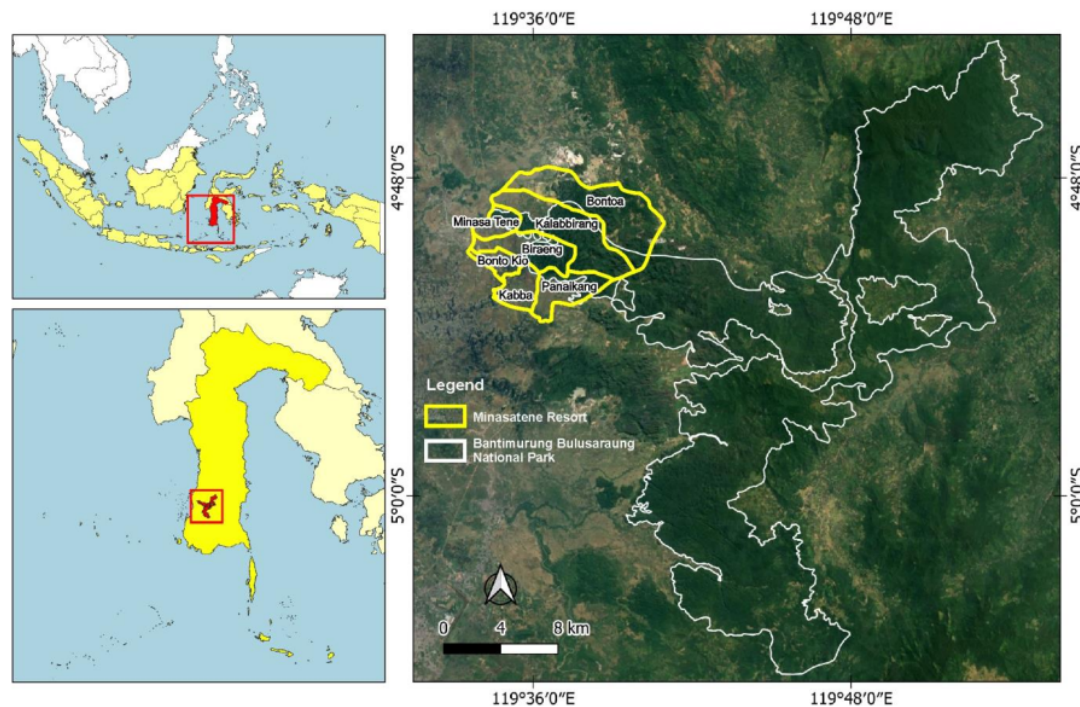
Bantimurung-Bulusaraung National Park is located in the unique karst formation and is known as the second-largest karst area after China, with a width of more than 40,000 ha. The national park was established in 2004 by the Ministry of Forestry (Siburian 2010). The presence of a karst ecosystem has become a distinct feature of this region (Puspitaningtyas 2017). It is also known for the diversity, uniqueness and beauty of its plants; there are 709 species of plants derived from 100 families that have been identified (Ministry of Environment and Forestry 2016). As one potential habitat for medicinal plants, the national park has not been widely explored. This study aims to examine the diversity and use of traditional medicinal plants by the local community living adjacent to Bantimurung-

Bulusaraung National Park. It is expected that the results of the study will provide essential answers related to the knowledge and use of medicinal plants for curing certain diseases by the locals obtained in the forest but these could also be further used to initiate and promote forest conservation efforts in the area through community empowerment.

## MATERIALS AND METHODS

### Study area

This study focused on the community living in the buffer area of Bantimurung-Bulusaraung National Park. The Minasatene area, as part of the national park, is a buffer area and is located in the Pangkajene Kepulauan (Pangkep) District, South Sulawesi Province, Indonesia (Figure 1). The area is situated between 4° 47'33" to 4° 53'24" south latitudes and 119° 33'30" to 119° 40'55" east longitudes. The distance between the study area and the capital city of South Sulawesi Province (Makassar) is approximately 55 km. The total area of Minasatene is 79.15 km<sup>2</sup> and is the district with the highest population density compared to other buffer areas of the national park, with 39,364 people (Ministry of Environment and Forestry, 2016).



**Figure 1.** Location of Minasatene Resort, Bantimurung Bulusaraung National Park, South Sulawesi, Indonesia

### Procedures

In this study, 60 respondents were interviewed, consisting of traditional healers, elderly people, herb sellers, and local people of Minasatene in Bantimurung-Bulusaraung National Park. A traditional healer is a person who uses traditional medicine to cure people who are ill or injured. An elderly person is a person 60 years of age or older who understands the use of medicinal plants. A herb seller is a person who sells herbs, especially medicinal herbs. Local people in this study are defined as the people who live in Minasatene Resort, are aged 30-80 years old and have used medicinal plants. Informant selection, in particular the healers, was based on the snowball sampling technique. The subsequent informants are determined by the directions given by the previous respondents.

Ethnobotanical data were collected from November 2021 to January 2022 using semi-structured interviews. The collected ethnobotanical data included the demographic profiles of respondents, diversity of plant species (vernacular names of plants), use of medicinal plant species (type of ailments, plant parts used, modes of preparation, and methods of application) and plant origins. The scientific name and family of each medicinal plant mentioned were later checked using different websites of plant databases such as <http://www.theplantlist.org>, and <http://www.powo.science.kew.org>.

Medicinal plants reported by the respondents were grouped into seven categories, according to Jadid et al. (2020). The seven categories were 1) gastrointestinal disorders (ulcers, constipation, flatulence, nauseous, diarrhea, food poisoning and worm infection); 2) dermatological diseases (wounds, bruises, scars, smallpox, hair care, ringworm, skin rash, boils and burns); 3) urogenital and gynecological problems (menstrual cramps, urinary tract infection, kidney disease, leucorrhoea and aphrodisiacs); 4) skeletomuscular disorders (gout, muscle pain, rheumatism, arthritis, back pain and bone pain); 5) internal medical diseases (high cholesterol, cancer, fever, malaria, dengue fever, chills, hemorrhoids, diabetes, hypertension, liver, typhus and heart disease); 6) respiratory, nose, ear, oral, eye and throat problems (coughs, colds, toothache, sprue, sore eyes, asthma, bronchitis, tonsils, stye, mumps and oral thrush); and 7) other (magical and spiritual problems, body odor issues, increase in appetite and breast milk booster).

### Data analysis

The demographic profiles of respondents were processed using Microsoft office excel to find the number of medicinal plant species known to each respondent. The respondents who knew >20 medicinal plant species and respondents who knew ≤20 medicinal plant species were compared based on their gender, age, education, and occupation using chi-square tests (*p*-values).

The diversity and use of medicinal plant data were also processed by excel software and the obtained results were processed by quantitative ethnobotanical indices consisting of Use Value (UV), Fidelity Level (FL), and Informant Consensus Factors (ICF). These three indices are further elaborated on:

### UV (Use Value)

To further analyze the relative importance of a medicinal species based on the variety of recorded uses, the UV index was deployed using the formula:

$$UV = \sum U_i / N$$

Where:  $U_i$  is the number of different uses mentioned by each respondent for a given species and  $N$  is the total number of participants (Zenderland et al. 2019).

### Fidelity Level (FL)

FL determines the specific uses of each plant species its preference over other species. Meanwhile, a limitation of this index is that if a plant species has a low number of uses (one use), the FL can be high (100%). In contrast, a plant species with a higher number of uses may have a low FL (Ceto and Heinrich 2011). In this study, used frequency of citation (FC) to determine the number of informants who mention the use of a plant species. The resulting FC value can then be correlated with FL to identify a species with high fidelity. FLs were calculated using the following equation:

$$FL = \sum Np / n$$

Where:  $Np$  is the number of respondents who mentioned the use of the given species for medicinal treatment and  $n$  is the total number of respondents who cited the plant species for any medicinal treatment (Jadid et al. 2020).

### Informant Consensus Factor (ICF)

ICF was determined to investigate the agreement between each group of diseases and reported remedies. ICF was calculated as follows:

$$ICF = (Nur - Nt) / (Nur - 1)$$

Where:  $Nur$  is the number of valuable reports in each ailment category and  $Nt$  is the number of species used for this ailments category (Heinrich et al. 1998).

## RESULTS AND DISCUSSION

### Demographic profile of study respondents

This study involved 60 respondents, consisting of 19 traditional healers, 7 elderly people, 4 herb sellers, and 30 local people of Minasatene in Bantimurung-Bulusaraung National Park. These respondents were categorized based on their socio-demographic data (Table 1). Among the 60 respondents, 58% were female and 60% were over 50 years old and 40% were below 40 years old. Most respondents had graduated from high school (31%). The respondents consisted of 25% traditional healers, 22% unemployed/housewives, 13% laborers/farmers, 13% civil servants, 10% private employees and 17% sellers/traders.

**Table 1.** Demographic profile of study respondents (n=60)

Characteristic	No. of respondents	
	Frequency	%
<b>Gender</b>		
Male	25	42
Female	35	58
<b>Age group (years old)</b>		
31-40	8	13
41-50	16	27
51-60	18	30
61-70	9	15
71-80	9	15
<b>Education</b>		
Uneducated	6	10
Elementary	13	22
Secondary school	13	22
High school	19	31
University	9	15
<b>Main occupation</b>		
Traditional healer	15	25
Unemployment/housewife	13	22
Laborer/farmer	8	13
Civil servant	8	13
Private employee	6	10
Seller/trader	10	17
<b>Respondents</b>		
Traditional healer	19	32
Elderly	7	12
Herb seller	4	6
Local people	30	50

**Table 2.** Families of medicinal plants with two or more species

Families	Number of species
Acanthaceae	3
Amaryllidaceae	2
Anacardiaceae	2
Annonaceae	2
Asteraceae	4
Euphorbiaceae	4
Fabaceae	4
Lamiaceae	2
Moraceae	3
Myrtaceae	3
Oxalidaceae	2
Phyllanthaceae	3
Piperaceae	2
Poaceae	3
Rubiaceae	2
Rutaceae	2
Zingiberaceae	4
Others	27

### Diversity of medicinal plants

The result shows that in Minasatene (Banting-Bulusaraung National Park), there were 74 plant species belonging to 65 genera and 44 families listed as medicinal

plants among the Minasatene people were reported. Out of these, 61 species of plants had more than one usage, while the remaining had just one usage.

Out of the 44 plant families, 17 had more than one species of medicinal plant (Table 2). The top families mentioned by respondents belonged to the families of Asteraceae, Euphorbiaceae, Fabaceae and Zingiberaceae, with four species in each, followed by species belonging to families Acanthaceae, Moraceae, Myrtaceae, Phyllanthaceae and Poaceae with three plant species. The plant genus with the highest number of mentioned species was *Jatropha*, with three species of medicinal plant.

A total of 54 medicinal uses (remedies) were recorded in this study. Thirteen ailments were reported to be treated by a single medicinal plant, while the remaining were by at least two medicinal plants. Various ailments with five or more plant species can be seen in Figure 2. Diabetes is treated by 11 species, including *Andrographis paniculata*, *Tinospora crispa*, and *Vernonia amygdalina*, which have a bitter taste. Followed by coughs and hypertension by 9 species, hypotension by 7 species. This high number of species was used to treat fairly common ailments, such as diarrhea, fever, ulcers, diabetes and respiratory problems (colds and coughs). Some medicinal plants used to treat respiratory problems, such as ginger and lemongrass, are also believed to treat COVID-19.

This study recorded 12 different usable parts (Figure 3A) with leaves as the most dominant part used (47%) followed by fruits (11%). Barks and whole parts (8% each), rhizomes and sap (6% each) were also used to treat human ailments. Seeds (5%), stems (3%), bulbs and roots (2%, each) and flowers and shoots (1%, each) were parts that were occasionally used. The results showed that the majority of remedies were prepared through decoction (51%), and this method was reported to have a higher level of efficacy (Penecilla and Magno 2011). Prior to the application of medicinal plants, turning plants and parts into pastes (16%) and juices (10%), brewing (4%), creating powders (3%) and cooking (2%) were also reported as other processing methods. A few plant species (14%) were identified to be directly consumed without prior handling and processing. However, the application methods of obtained TMPs in this study varied with the type of disease treated. The most frequently reported mode of administration was oral intake (68%), followed by an external application (24%) and rubbing (7%), while only one species (1%) were given by inhalation. Among all the plant species in this study, 46 of them (62%) were collected from the wild, 19 species (26%) from cultivated land and 9 species (12%) from both wild and cultivated land.

### Relationship between knowledge of medicinal plants and socio-demographic factors

To describe the relationship between knowledge of medicinal plants gained by the community and socio-demographic factors, a test of chi-square was applied. The result revealed there is no significant correlation between knowledge of medicinal plant species and gender ( $p = 0.700$ ), age ( $p = 0.669$ ), education ( $p = 0.845$ ) or occupation ( $p = 0.794$ ) of respondents.

**Use Value (UV)**

The UV of each medicinal plant was determined to assess the commonness in the use of each plant in the study area. Results of the study revealed that the UV ranged from 0.02 to 0.95. The 10 highest values of UV are indicated in Figure 4, including *Annona muricata* (0.95), *Chromolaena odorata* (0.93), *Curcuma longa* (0.90), *Zingiber officinale* (0.82), *Orthosiphon aristatus* (0.77), *Phyllanthus niruri* and *Ficus septica* (0.72 for each), *Carica papaya*, *Lannea coromandelica* and *Psidium guajava* (0.70 for each).

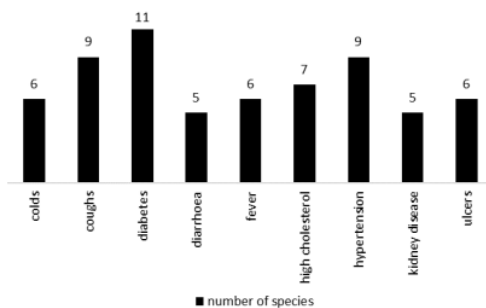
**Fidelity Level (FL)**

To determine the highly preferred medicinal plant species for specific uses FL was employed and the results showed that the FL for each plant species ranged from 35% to 100% (Table 3). Information provided by informants on a particular plant's medical usefulness was regarded as a frequency of citation (FC). Plant species with the highest FL and FC can be seen in Figure 5. *Ficus septica* (toboto) had the highest value based on the number of respondents who indicated the use of this plant species (mentioned by 43 out of 60 respondents).

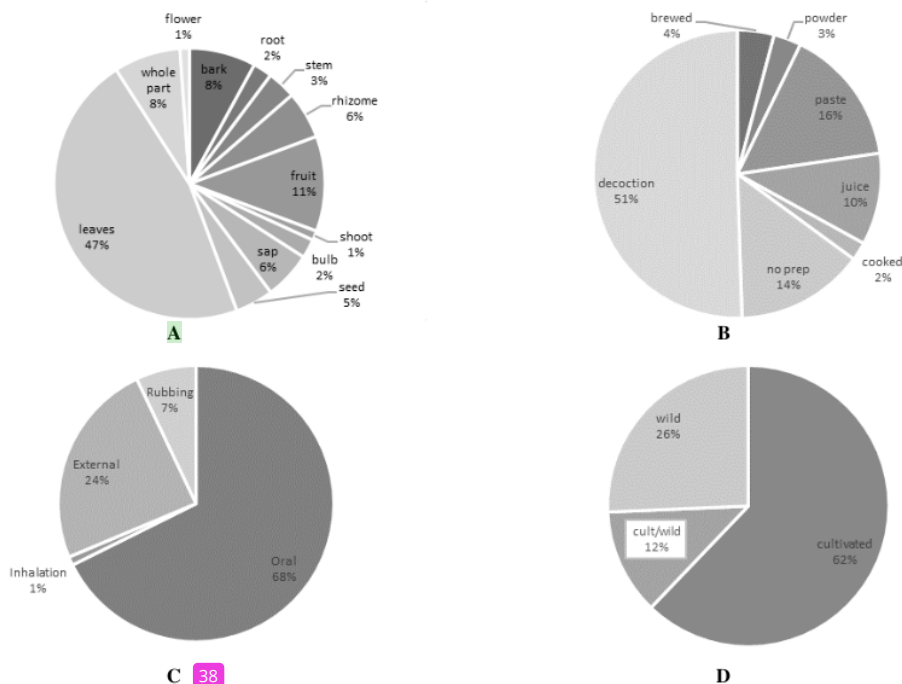
**Informant Consensus Factor (ICF)**

The 54 medicinal uses (remedies) classified into seven ailment categories (Table 4). The ICF was calculated to determine the level of homogeneity among respondents that used plants to treat each ailment category. This study indicated ICF values ranging from 0.86 to 0.92 per each

ailment category that showed a high level of consensus among the 60 respondents in the multiple uses of the 74 medicinal plant species. The highest ICF value was found in skeletomuscular disorders (0.92), while internal medical diseases were the most frequently treated ailments, with 501 reported from the answers given by the interviewed respondents and 50 medicinal plant species. Meanwhile, the lowest ICF values (0.86) was other diseases (magical and spiritual problems, body odor issue, increase in appetite and breast milk booster).  $N_{ur}$  refers to the number of use reports per ailment, while  $N_t$  is explained as the number of plant species that were reported to address a particular plant-use category.



**Figure 2.** Various ailments with five or more species of medicinal plants in Minasatene (Bantimurung-Bulusaraung National Park), South Sulawesi, Indonesia



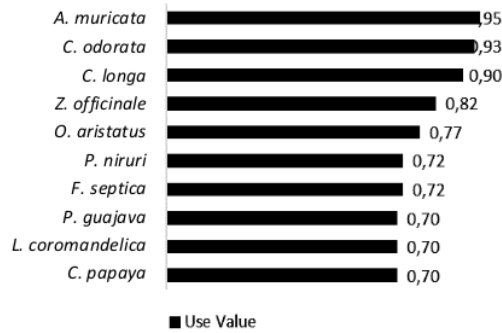
**Figure 3.** Summary of information on medicinal plants used by the local people in Minasatene, Bantimurung-Bulusaraung National Park, South Sulawesi, Indonesia based on: A. Plant parts used; B. Modes of preparation; C. Methods of application, and D. Plant origins

**Table 3.** Medicinal Plants used for treating various ailments in Minasatene-Bantimurung Bulusaung National Park, South Sulawesi, Indonesia. (Ba: bark; Bu: bulb; FI: flower; Fr : fruit; Le: leaves; Rh: rhizome; Ro: root; Sa: sap; Se: seed; Sh: shoot; St: stem; Wp: whole part; Bre: brewed; Coo: cooked; Dec: decoction; Jui: juice; Pas: paste; Raw: no preparation; Ext: external application; Inh: inhalation; Ora: oral intake; Rub: rubbing; C: cultivated; W: wild; MoP: mode of preparation; MoA: method of application; UV: *Use Value*; FL: *Fidelity Level*; Ori: Plant's origins)

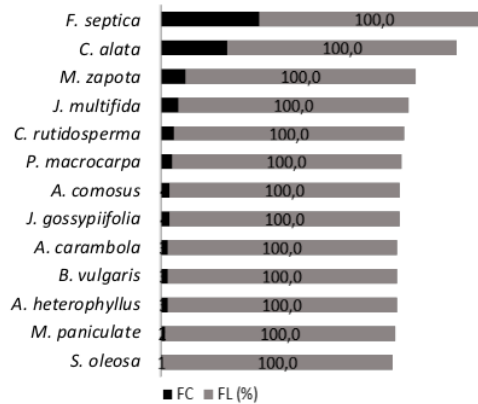
Family	Scientific name	Vernacular name	Type of ailments treated	Part used	MoP	MoA	UV	FL	Ori
Acanthaceae	<i>Acanthus illicifolius</i> (L.)	Kalli-kalli	Mumps	Le	Dec	Ora	0.38	52.2	C
	<i>Andropogon paniculata</i> (Burm.f.) Ness	Sambiloto	Worm infection	Se	Pow	Ora	0.37	45.5	C
	<i>Strobilanthes crispus</i> Blume	Keci beling	Coughs, diabetes, colds	Le	Dec	Ora	0.50	56.7	W
Acoraceae	<i>Acorus Calamus</i> (L.)	Kareango	Urinary tract infection, back pain	Rh	Dec	Ora	0.08	60.0	C/W
	<i>Allium ascalonicum</i> (L.)	Bawang merah	Diarrhoea	Wp	Raw	Ext	0.47	75.0	C
	<i>Allium sativum</i> (L.)	Bawang putih	Magical/spiritual problems	Bu	Pas	Rub	0.32	89.5	C
	<i>Lansea coromandelica</i> (Hout.) Merr.	Tammate	Colds	Bu	Pas	Inh	0.70	50	W
Anacardiaceae	<i>Mangifera indica</i> (L.)	Taipa	Hypertion	Bu	Dec	Ora	0.15	66.7	C
	<i>Annona muricata</i> (L.)	Sirsak	Stye	Bu	Dec	Ora	0.95	71.9	C
	<i>Annona squamosa</i> (L.)	Serikaya	Wounds	Ba	Jui	Ext	0.17	55.6	C
	<i>Centella asiatica</i> (L.) Urb.	Tungke-tungke	Ulcers, haemorrhoids	Se	Pow	Rub	0.32	36.8	W
Apiaceae	<i>Astonia scholaris</i> (L.) R. Br.	Rita	High cholesterol, diabetes	Le, Ba	Dec	Ora	0.30	55.6	C
Apocynaceae	<i>Cocos nucifera</i> (L.)	Kaluku	High cholesterol, back pain	Ba	Dec	Ora, Ext	0.30	72.2	C
	<i>Aloe vera</i> (L.) Burm. f	Lidah buaya	Cancer	Fr	Raw	Ora	0.28	82.4	C
Asphodelaceae	<i>Chromolaena odorata</i> (L.) R.M.King & H.Rob.	Lahuna	Diarrhoea	32	Jui	Rub	0.93	83.9	W
Asteraceae	<i>Elephantopus scaber</i> (L.)	Lisu-lisu tanah	Hair care	Le	Pas	Ext	0.13	50	W
	<i>Pluchea indica</i> (L.) Less.	Lanutasa	Hair care, burns	Le	Pas	Ext	0.32	84.2	C/W
	<i>Vernonia amygdalina</i> Delile	Daun afrika	Wounds	Le	Pas	Ext	0.47	60.7	C
Basellaceae	<i>Anredera cordifolia</i> (Ten.) Steenis	Binahong	Ulcers	Le	Dec	Ora	0.33	35.0	C
	<i>Ananas comosus</i> (L.) Merr.	Nenas	Ulcers, smallpox, cancer	Le	Pas	Ext	0.07	100	C
Bromeliaceae	<i>Cleome rutidosperma</i> DC.	Birosa	Body odor, high cholesterol	Wp	Pas	Ext	0.10	100	W
Capparaceae	<i>Carica papaya</i> (L.)	Pepaya	Hypertension, ulcers	Le	Dec	Ora	0.70	66.7	C
Caricaceae	<i>Bryophyllum pinnatum</i> (Lam.) Oken	Cocor bebek	Bruise	Le	Dec, Raw	Ora	0.45	74.1	C/W
Crassulaceae	<i>Momordica charantia</i> (L.)	Paria	Tonsils	Le	Pas	Ext	0.37	68.2	C;
Cucurbitaceae			Sore eyes	Le	Jui	Ora			
			Dengue fever, chills	Le	Pas	Ext			
			Fever, boils	Le	Pas	Ext			
			Coughs	Le	Jui	Ora			
			Smallpox	Le	Jui	Ext			

Euphorbiaceae	<i>Aleurites moluccanus</i> (L.) Willd.	Kemiri	Constipation	Se	Dec	Ora	0.10	66.7	C
	<i>Jatropha curcas</i> (L.)	Tangan-tangan kanjoli	Hair care Toothache, sprue, oral thrush Magical/spiritual problems	Se Sa	Dec Raw	Rub Ora	0.68	51.2	C
	<i>Jatropha gossypifolia</i> (L.)	Jarak merah	Wounds	St	Raw	Ext	0.07	100	C
	<i>Jatropha multifida</i> (L.)	Pinisilin	Wounds	Sa	Raw	Ext	0.13	100	C
Fabaceae	<i>Mimosa pudica</i> (L.)	Jabe-jabe	Diabetes, aphrodisiac	Le	Dec	Ora	0.27	50.0	W
	<i>Leucaena leucocephala</i> (Lam.) de Wit	Langoro	Haemorrhoids	Ro	Pas	Ext	0.07	50	C/W
	<i>Pterocarpus indicus</i> Willd.	Angsana	Kidney disease	Ba	Dec	Ora	0.08	60.0	C/W
	<i>Senna alata</i> (L.) Roxb.	Kiti-kiti balanda	Sprue	Sa	Raw	Ext	0.48	100	W
Lamiaceae	<i>Orthosiphon aristatus</i> (Blume) Miq.	Kumis kucing	Ringsworm	Le	Pas	Fr, b	0.77	73.9	C
	<i>Plectranthus scutellaroides</i> (L.) R.Br	Miana	Urinary tract infection, gout	Le	Dec	Ora	0.50	80.0	C
Lauraceae	<i>Persea americana</i> Mill.	Alpukat	Coughs, asthma	Le	Bre	Ora	0.20	58.3	C
Malvaceae	<i>Abelmoschus manihot</i> (L.) Medik	Gedi	Hypertension, kidney disease	Le	Dec	Ora	0.38	52.2	C
Meliaceae	<i>Swietenia macrophylla</i> King	Mahoni	Cancer, high cholesterol	Se	Pow	Ora	0.20	58.3	C
Menispermaceae	<i>Tinospora crispa</i> (L.) Hook. f. & Thomson	Tambara kaleleng	Malaria, diabetes	St	Dec	Ora	0.25	53.3	W
Moraceae	<i>Artocarpus altilis</i> (Parkinson ex F.A.Zorn) Fosberg	Bakara	Bone pain, diabetes	Le	Dec	Ora	0.18	54.5	C
	<i>Artocarpus heterophyllus</i> Lam.	Nangka	Diabetes, high cholesterol	Le	Pas	Ext	0.05	100	C
	<i>Ficus septica</i> Burm.f.	Tobo-tobo	Boils	Le	Raw	Ext	0.72	100	W
Moringaceae	<i>Moringa oleifera</i> Lam.	Keloro	Fever	Le	Dec	Ext	0.60	38.9	C
	<i>Muntingia calabura</i> (L.)	Kersen	Breast milk booster, eyes	Le	Coo	Ora	0.68	51.2	W
Musaceae	<i>Musa x paradisiaca</i> (L.)	Unti	Diabetes, hypertension	Le	Dec	Ext	0.15	62.5	C/W
	<i>Psidium guajava</i> (L.)	Jambu-jambu	Fever	Le	Pas	Ext	0.70	92.9	C
Myrtaceae	<i>Syzygium cumini</i> (L.) Skeels	Coppeng	Diarrhoea	Fr, Le	Raw	Ora	0.15	55.6	C/W
	<i>Syzygium polyanthum</i> (Wight) Walp.	Leko salam	Diarrhoea	Fr, Le	Dec	Ora	0.43	57.7	C
Oxalidaceae	<i>Avr-hoa bilimbi</i> (L.)	Belimbing	Bronchitis	Le, Ba	Dec	Ora	0.42	56.0	C/W
	<i>Avr-hoa carambola</i> (L.)	Belimbing bintang	Diabetes, diarrhoe	Le	Dec	Ora	0.05	100	C
Pandanaceae	<i>Pandanus amaryllifolius</i> Roxb.	Pandan	Coat, hypertension	Fr, Le	Dec	Ora	0.15	60	C
Phyllanthaceae	<i>Phyllanthus acidus</i> (L.) Skeels	Caramela	Fever, hypertension	Le	Dec	Ora	0.07	75.0	C
	<i>Phyllanthus niruri</i> (L.)	Camba-camba sibokoi	Heart disease	Fr	Raw	Ora	0.72	55.8	W
	<i>Sauropus androgynous</i> (L.) Merr.	Katu'	Nauseous, menstrual cramps, rheumatism	Le	Dec	Ora	0.18	54.5	C
	<i>Peperomia pellucida</i> (L.) Kunth	Lawi-lawi darat	Hypertension, nauseous	Le	Dec	Ora	0.57	55.9	W
Piperaceae	<i>Piper betle</i> (L.)	Sirih	Arthritis, kidney disease	Wp	Dec	Ora	0.67	37.5	C
	<i>Bambusa vulgaris</i> Schrad.	Bambu kuning	Breast milk booter, fever	Le	Coo	Ora	0.05	100	C
	<i>Cymbopogon citratus</i> (DC.) Stapf	Sereh	Smallpox	Le	Pas	Ext	0.52	45.2	C
	<i>Imperata cylindrica</i> (L.) Raeusch.	Alang-alang	Muscle pain	Le	Pas	Ext	0.05	66.7	W
			Bruise	Wp	Dec	Ext			
			Leucorrhoea, sore eyes, toothache, coughs	Le	Dec, Bre	Ora, Ext			
			Liver	Sh	Dec	Ora			
			Arthritis, flatulence, colds	St	Dec	Ora			
			Kidney disease, coughs	Ro	Dec	Ora			

Portulacaceae	<i>Portulaca oleracea</i> L.	Alo		Wp	Pas	5 t	0.13	62.5	W
Rhamnaceae	<i>Ziziphus mauritiana</i> Lam.	Bidara		Wp	Dec	Ora	0.20	58.3	C
Rubiaceae	<i>Ixora coccinea</i> (L.) <i>Morinda citrifolia</i> L.	Asoka Baja'		Le	Dec	Ora	0.03	50	C/W
Rutaceae	<i>Citrus aurantiifolia</i> (Christm.) Swingle <i>Murraya paniculata</i> (L.) Jack	Jeruk lemo Keruning		Fr	Dec, Jui	Ora	0.57	38.2	W
Sapindaceae	<i>Schleichera oleosa</i> (Lour.) Merr.	Ba'do		Le	Dec	Ora	0.23	64.3	C
Sapotaceae	<i>Manilkara zapota</i> (L.) P.Royen	Sawo manila		Le, Ba	Dec	Ora	0.02	100	C
Solanaceae	<i>Physalis angulata</i> (L.)	Lappo-lappo		Fr	Jui	Ora	0.18	100	C
Sterculiaceae	<i>Kleinhovia hospita</i> (L.)	Paliasak		Fr, Le	Bre	Ora	0.17	60.0	W
Thymelaeaceae	<i>Phaleria macrocarpa</i> (Scheff.) Boerl.	Maikota dewa		Le	Dec	Ora	0.35	52.4	C
Verbenaceae	<i>Lantana camara</i> L.	Tai jangang		Le	Pas	Ext	0.55	42.4	W
Zingiberaceae	<i>Kaempferia galanga</i> (L.) <i>Curcuma longa</i> (L.)	Cakkuru Kunyi		Le	Dec	Ora	0.12	71.4	C
				Rh	Jui	Ora	0.90	50	C
				Rh	Jui	Ext			
				Rh	Pas	Ext			
	<i>Curcuma xanthorrhiza</i> Roxb. <i>Zingiber officinale</i> Roscoe	Temnu Jahe		Rh	Jui	Ora	0.42	64	C
				Rh	Dec	Ora	0.82	36.7	C



**Figure 4.** Medicinal plant species with the highest Use Value (UV) in Minasatene (Bantimurung-Bulusaraung National Park), South Sulawesi, Indonesia



**Figure 5.** Frequency of citati (54) with the highest Fidelity Level of plant species in Minasatene (Bantimurung-Bulusaraung National Park), South Sulawesi, Indonesia

**Table 4.** ICF values by categories for treating ailments in Minasatene (Bantimurung-Bulusaraung National Park), South Sulawesi, Indonesia

Ailment categories	No. of species (N <sub>i</sub> )	No. of use reports (N <sub>ur</sub> )	Informant Consensus Factor (ICF)
Gastrointestinal disorders	18	155	0,89
Dermatological diseases	20	224	0,91
Urogenital and gynaecological problems	11	114	0,91
Skeletomuscular disorders	14	167	0,92
Internal medical diseases	50	501	0,90
Respiratory-nose, ear, oral, eyes, throat problems	32	258	0,88
Others	12	77	0,86

**Discussion**

All respondents in this study were indigenous inhabitants of Minasatene who were familiar with medicinal plants and their uses. These respondents were categorized based on their socio-demographic data. Compared with men, women were more interested in medicinal plants, which indicated women were more familiar with the knowledge and utilization of medicinal plants. This is similar to other ethnobotanical research (Nahdi and Kurniawan 2019; Nguyen et al. 2019; Chaachouay et al. 2021), where women were the majority of respondents. This is because women are usually in charge of health care in their households (Nguyen et al. 2019). The proportions in age categories indicated that older people tended to have more experience in the use of medicinal plants. Older women in the Amazon are also known to be more familiar with and use more medicinal plants compared to younger women (Wayland and Walker 2014). Most of the respondents had graduated from high school, while their occupations were traditional healers, unemployed/housewives, laborers/farmers, civil servants, private employees and sellers/traders.

Table 3 shows that there were 74 species belonging to 65 genera and 44 families listed as medicinal plants. The highest number of plants belonged to the genus *Jatropha*

with three species of medicinal plants. Of these species, *J. curcas* had the most reported one for treating ailments, one of which was for magical or spiritual problems. The stem of the plant is believed to exorcise demons. Other species of the genus *Jatropha* was *J. gossypifolia* and *J. multifida*, which were used wound healing. The importance of *Jatropha* was also reported to have biological benefits such as anti-microbial, anti-infectious and healing properties by other study reports (Xavier-Santos et al. 2018; Vieira et al. 2021).

A total of 54 medicinal uses (remedies) were recorded in this study. Diabetes had the highest number of plant species because local people believed that plants with bitter tastes were effective at reducing blood sugar levels. This is similar to research by Chen et al. (2015), which stated that herbal medicines with bitter flavor and analgesic properties have multiple anti-diabetic mechanisms. A large number of species were used to treat respiratory problems (colds and coughs) which were believed to be symptoms of COVID-19. Respondents believe that *Zingiber officinale* (ginger) can be used to treat COVID-19 symptoms, such as colds and coughs. This is similar to another study carried out in Peru (Villena et al. 2021) and Thailand (Phumthum et al. 2021). Another medicinal plant that was used to treat COVID-19 was *Cymbopogon citratus* (lemongrass). It has

been reported to contain immune-boosting properties (Oladel et al. 2020).

In ethnobotanical studies, different plant parts are used to treat different diseases because the components in each part may have different effects (Nguyen et al. 2019). Plant parts can accumulate diverse and exciting natural components that act as factories, producing and offering substantial pharmaceutical potential (Jadid et al. 2020). Figure 3A shows that leaves were the most common plant material used in Minasatene (Bantimurung-Bulusaraung National Park). Leaves are the major plant component commonly used in herbal medicine in Indonesia (Mustofa et al. 2020; Fathir et al. 2021) and other countries (Chaachouay et al. 2020; Islam et al. 2020), as this part can be easily found in tropical regions. It's also known to be easy to handle and more sustainable compared to other parts of plants in terms of preservation. Removing the leaves within reasonable limits does not risk the plant's life compared to collecting the stem and root (Jadid et al. 2020). For some plants, only one part can be used, but for some other plants, all parts can be used. For example, the flower and leaves of starfruit (*Averrhoa bilimbi*) can be used to treat fever. Also, for *Alstonia scholaris*, the sap produced can treat toothaches, while the bark is used for treating malaria.

There were various modes of preparation before using plants as remedies in Minasatene. Plants were brewed, cooked, made into decoctions, juices, pastes and powders or as fresh. The results showed that the majority of remedies were prepared from decoction (Figure 3B). This method has been reported to have a higher level of efficacy due to its fast absorption process (Penecilla and Magno 2011). Some people ingested decoctions orally, but some were smeared on the body. A unique mode of preparation was recorded for *Cleome ruidosperma*. The plant parts were kneaded or crushed and the resulting paste was put in a bottle and brought close to the eye. The plants would secrete oil that would heal the eyes, according to respondents. This method was also reported in Sumatra (Ministry of Environment and Forestry, 2015).

The application methods in this study varied with the type of disease treated. The most frequent was oral ingestion (Figure 3C). This is similar to previous studies (Nguyen et al. 2019; Chaachouay et al. 2021; Fathir et al. 2021). *Allium cepa* was discovered to be inhaled to treat colds. Extracts of *A. cepa* have been shown to have relieving effects on obstructive respiratory diseases (Beigoli et al. 2021).

The plant species in Minasatene were collected from the wild, cultivated or a combination of both (Figure 3D). Medicinal plants collected in the wild, such as from forests, fields and ponds, were available to any local people who wanted to use them. However, medicinal plants obtained from yards or home gardens were grown for respondents' own use. This is similar to another study in Vietnam, where the medicinal plants obtained from home gardens (cultivated) were primarily grown for food preparation and for marketing, such as stimulants and ornaments (Nguyen et al. 2019).

In this study, there was no significant relationship between socio-demographic factors and knowledge of medicinal plants. This might be related to the length of exposure to experiences, where most respondents had inherited knowledge of medicinal plants from using them in the same ways as their ancestors. Therefore, data was not differentiated in terms of gender, age, education and occupation. In contrast, however, several studies have indicated that gender (Bano et al. 2014; Wiryono et al. 2019), age (Bano et al. 2014; Pérez-Nicolás et al. 2017; Wiryono et al. 2019), education (Bano et al. 2014; Pérez-Nicolás et al. 2017; Rahayu et al. 2020) and occupation (Moke et al. 2021; Rahayu et al. 2020) do influence the transmission of traditional knowledge about medicinal plants' therapeutic uses in many ethnic communities.

The plant species with the highest UV was commonly known and available in the study area, while plants had lower UVs if respondents had less knowledge about them. In the study area, *A. muricata* is used to treat high cholesterol, back pain and cancer. Its extracts and phytochemicals have been characterized as antioxidant, anti-microbial, anti-inflammatory, insecticidal, larvicidal and cytotoxic to cancer cells (Gavamukulya et al. 2017). *Curcuma longa* is used to treat wounds and ulcers. The leaves of this plant are a rich source of flavonoids and have been proven to help enhance wound-healing activities. Therefore, its activity as a wound-healing agent for superficial and internal wounds, such as ulcers, should be further investigated (Bhuyan et al. 2019). *Curcuma longa* or turmeric is one species in the genus *Curcuma*, widely known as a valuable material in modern pharmacy. Curcumin is the main phenolic constituent of the genus, especially in the turmeric rhizome. It has anti-inflammatory, anti-mutagenic, anti-bacterial, anti-cancer, expectorant and hepatoprotective properties (Gupta et al. 2012; Krup et al. 2013; Mondal et al. 2015). This study found that local people use turmeric to treat ulcers, menstrual cramps, constipation and scars. We also found that people in Minasatene use *Z. officinale* for respiratory disease (colds and coughs), nausea and muscle pain. It has been reported to have similar use in Yogyakarta and Vietnam (Nahdi and Kurmiawan 2019; Nguyen et al. 2019). The use of *O. aristatus* to treat urinary tract infections is in line with the research of Nisa et al. (2021), who found that *O. aristatus* is the plant most often used to treat urinary tract infections in several areas of eastern Indonesia.

Fidelity Level is useful in determining which plants are most commonly utilized to treat specific diseases (Khan et al. 2014). The higher the FL, the more people can be said to trust a medicinal plant to treat specific diseases; on the other hand, the lower the FL, the fewer people seem to trust medicinal plants. Figure 5 shows that *Ficus optica* (tobo-tobo) gets the highest value, based on the number of respondents who indicated the use of a plant species (mentioned by 43 out of 60 respondents). Respondents believe tobo-tobo can treat fever. Huang et al. (2017) described a variety of uses for tobo-tobo, including treating dengue fever.

The Informant Consensus Factor was used to evaluate the homogeneity of the use of medicinal plants. Higher values suggested that respondents utilized certain plant species to treat a particular disease, whereas low values indicated low agreement on plant use for a specific disease (Elfrida et al. 2021). The highest ICF value was found in skeletomuscular disorders. This is quite different from other study results, where gastrointestinal was the most cited disease category (Nguyen et al. 2019; Bhagawan and Kusumawati 2021).

In summary, the present ethnobotanical study of medicinal plant species among traditional healers, elderly people, herb sellers and local people in Minasatene (Bantimurung, Tulusaraung National Park) reveals a rich diversity of medicinal plants. The people in the area reported using 74 species of medicinal plants derived from 65 genera and 44 families. The plant species were believed to treat 54 different ailments in seven categories. Leaves were the most popular plant part used. The most common methods of preparation and application of medicinal plants were decoction and oral intake. During data analysis, it was discovered that the application of ethnobotanical indices such as Use Value (UV), Fidelity Level (FL), and Informant Consensus Factor (ICF) validated the effectiveness of the ethnobotanical practices of local people; as such, they may be used to further support plant conservation and pharmacological studies for new drug discovery. Furthermore, medicinal plants with high scores of UV and FL in this study warrant future additional biochemical analysis to determine their bioactive substances, whereas those with low scores can be promoted more. Finally, the information we gathered may assist local communities in producing, market and profit from medicinal plants, thereby significantly increasing the local society's collective revenue.

#### ACKNOWLEDGEMENTS

We would like to thank all the people from Minasatene Resort for participating in this study and sharing all their information. We would also like to thank the National Research and Innovation Agency Republic of Indonesia (BRIN) and P2CIKU Universitas Hasanuddin, Indonesia, for funding the study.

#### REFERENCES

- Allkin B. 2017. Useful Plants-Medicines. In: Willis KJ (ed). State of the World's Plants 2017. Royal Botanical Gardens, Kew, London.
- Azis S, Zubaidah S, Mahanal S, Batoro J, Sumitro SB. 2020. Local knowledge of traditional medicinal plants use and education system on their young of Ammatoa Kajang Tribe in South Sulawesi, Indonesia. *Biodiversitas* 21 (9): 3989-4002. DOI: 10.13057/biodiv/d210909.
- Bano A, Ahmad M, Hadda TB, Saboor A, Sultana S, Heinrich M, Ankli A, Frei B, Weimann C, Sticher O. 1998. Medicinal plants in Mexico: Healers' consensus and cultural importance. *Soc Sci Med* 47(11): 1859-1871. DOI: 10.1016/S0277-9536-00181-6.
- Beigoli S, Behrouz S, Memarzia A, Ghasemi SZ, Boskabady M, Marefati N, Kiania F, Khazdair MR, El-Seedi H, Boskabady MS. 2021. Effect of *Allium cepa* and its constituents on respiratory and allergic disorders: A comprehensive review of experimental and clinical evidence. *Evid-Based Complement Altern Med* 5554259. DOI: 10.1155/2021/5554259.
- Bhagawan WS, Kusumawati D. 2021. Ethnobotanical medicinal plant study of Tengger Tribe in Ranu Pani Village, Indonesia. Proceedings of the 3rd International Conference on Education & Social Science Research (ICESRE). DOI: 10.2139/ssrn.3865725.
- Bhuyan M, Deb P, Dasgupta D. 2019. *Chromolaena odorata*: As nature's wound healer. *Intl J Curr Pharm Res* 11 (4): 63-65. DOI: 10.22.159/ijcpr.2019v11i4.34955.
- Chaachouay N, Douira A, Zidane L. 2021. Herbal Medicine Used in the Treatment of Human Diseases in the Rif, Northern Morocco. *Arab J Sci Eng* 47(1): 131-153. DOI: 10.1007/s13369-021-05501-1.
- Ceto AA, Heinrich M. 2011. From the field into the lab: useful approaches to selecting species based on local knowledge. *Front Pharmacol* 2 (20). DOI: 10.3389/fphar.2011.00020.
- Chaachouay N, Douira A, Zidane L. 2021. Herbal medicine used in the treatment of human diseases in the Rif, Northern Morocco. *Arab J Sci Eng* 47 (1): 131-153. DOI: 10.1007/s13369-021-05501-1.
- Chan KW, Wong VT, Tang SCW. 2020. COVID-19: An update on the epidemiological, clinical, preventive and therapeutic evidence and guidelines of integrative Chinese-Western medicine for the management of 2019 novel coronavirus disease. *Am J Chin Med* 48 (3): 737-762. DOI: 10.1142/S0192415X20500378.
- Chen H, Jing G, Pang B, Zhao L, Tong X. 2015. Review Article: Application of herbal medicines with bitter flavor and cold property on treating diabetes mellitus. *Evid-Based Complement Altern Med*. DOI: 10.1155/2015/529491.
- Elfahmi, Woerdenbag HJ, Kayser O. 2014. Jamu: Indonesian traditional herbal medicine towards rational phytopharmacological use. *J Herbal Med* 4 (2): 51-73. DOI: 10.106/j.hermed.2014.01.002.
- Elfrida, Tarigan NS, Suwardi AB. 2021 Ethnobotanical study of medicinal plants used by community in Jambur Labu Village, East Aceh, Indonesia. *Biodiversitas* 22 (7): 2893-2900. DOI: 10.13057/biodiv/d220741.
- Fathir A, Haikal M, Wahyudi D. 2021. Ethnobotanical study of medicinal plants used for maintaining stamina in Madura ethnic, East Java, Indonesia. *Biodiversitas* 22 (1): 386-392. DOI: 10.13057/biodiv/d220147.
- Gavamukulya Y, Wamunyokoli F, El-Shemy HA. 2017. *Ammonia muricata*: Is the natural therapy to most disease conditions including cancer growing backyard? A systematic review of its research history and future prospects. *Asian Pac J Trop Med* 10 (9): 835-848. DOI: 10.1016/j.apjtm.
- Gupta SC, Patchva S, Koh W, Aggaewal BB. 2012. Discovery of *curcumin*, a component of golden spice and its miraculous biological activities. *Clin Exp Pharmacol Physiol* 39: 283-299. DOI: 10.1111/j.1440-1681-2011-05648.x.
- Heinrich M, Ankli A, Frei B, Weimann C, Sticher O. 1998. Medicinal plants in Mexico: Healers' consensus and cultural importance. *Soc Sci Med* 47 (11): 1859-1871. DOI: 10.1016/S0277-9536(98)00181-6.
- Huang NC, Hung WT, Tsai WL, Lain FY, Lin YS, Huang MS, Chen JJ, Lin WY, Weng JR, Chang TH. 2017. *Ficus septica* plant extracts for treating Dengue virus in vitro. *PeerJ* 5: e3448. DOI: 10.7717/peerj.3448.
- Islam ATMR, Hasan M, Islam T, Rahman A, Mitra S, Das SK. 2020. Ethnobotany of medicinal plants used by Rkazine indigenous communities in Patuakhali and Barguna District of Southern Bangladesh. *J Evid Based Integr Med* 25: 1-27. DOI: 10.1177/2515690X20971586.
- Jadid N, Kurniawan E, Himayani C, Andriyani, Prasetyowati I, Purwani KI, Muslihatin W, Hidayati D, Tjahjaningrum I. 2020. An ethnobotanical study of medicinal plants used by the Tengger Tribe in Ngadisari Village, Indonesia. *PLoS one* 15 (7): e0235886. DOI: 10.1371/journal.pone.0235886.
- Karimi A, Majlesi M, Rafieian KM. 2015. Herbal versus synthetic drugs: beliefs and facts. *J Nephropharmacol* 4 (1): 27-30.
- Khan I, AbdEl Salam NM, Fouad H, Tariq A, Ullah R, Adnan M. Application of ethnobotanical indices on the use of traditional medicines against common diseases. *Evid Based Complement Alternat Med* 635371. DOI: 10.1155/2014/635371.
- Krishnan S. 2016. Traditional herbal medicines-A review. *IJRAR* 5 (4): 611-614.
- Krup V, Prakash HL, Harini. 2013. Pharmacological activities of turmeric (*Curcuma longa* L.) A review. *J Tradit Med Clin Naturopathy* 2: 133. DOI: 10.4172/2167-1206.1000133.

- Li Y, Liu X, Guo L, Zhong D, Zhang Y, Clark M, Jin R. 2020. Traditional Chinese herbal medicine for treatment novel coronavirus (COVID-19) pneumonia: protocol for a systematic review and meta-analysis. *Systematic Reviews* 9(1):75. DOI: 10.1186/s13643-020-01343-4.
- Lim XY, The BP, Tan TYC. 2021. Medicinal plants in COVID-19: potential and limitations. *Front Pharmacol* 12: 611408. DOI: 10.3389/fphar.2021.611408.
- Lukman M, Wahyuddin E, Subehan, Manggau MA. 2014. Cytotoxic effect of four Makassar medicinal plants on human cervical cell lines and its selectivity. *Journal of Chemical and Pharmaceutical Research* 6(10): 851-855.
- Mahomoodally MF. 2013. Traditional medicines in Africa: An Appraisal of ten potent African medicinal plants. *Evid Based Complement Altern Med* 617459. DOI: 10.1155/2013/617459.
- Malini DM, Madihah M, Kusmoro J, Kamilawati F, Iskandar J. 2017. Ethnobotanical study of medicinal plants in Karawang, Distric of Cianjur, West Java. *Biosaintifika* 9 (2): 345-356. DOI: 10.15294/biosaintifika.v9i2.5756.
- Ministry of Environment and Forestry. 2015. A guide book for invasive alien plant species in Indonesia. Research, Development and Agency, Bogor. [Indonesian]
- Ministry of Environment and Forestry. 2016. Rencana Pengelolaan Jangka Panjang Taman Nasional Bantimurung Bulusaraung Periode Tahun 2016-2025. Maros. [Indonesian]
- Ministry of Forestry. 2004. Ministry of Forestry Regulation Number SK.398/Menhut-II/2004 concerning Land Use Change. Ministry of Forestry, Jakarta. [Indonesian]
- Ministry of National Development planning. 2016. Indonesian Biodiversity Strategy and Action Plan 2015-2020. Indonesian Government, Jakarta. [Indonesian]
- Moke EG, Umukoro EK, Asiwe JN, Omogbiya AI, Erhirhie EO, Ben-Azu B, Anieh FU. 2021. Herbal medicine: Education and occupation influences its practice among residents of Port Harcourt, South Nigeria. *Intl J Pharm Phytopharm Res* 11 (2): 38-44. DOI: 10.51847/ojxVsCMh9y.
- Mondal K, Arghya P, Salman H. 2015. Ethnobiological and traditional medicine practices in Burdwan District, West Bengal, India. *Intl J Ethnobiol Ethnomed* 19 (1): 1-8.
- Mustofa FI, Rahmawati N, Aminullah. 2020. Medicinal plants and practices of Rongkong traditional healers in South Sulawesi, Indonesia. *Biodiversitas* 21 (2): 642-651. DOI: 10.13057/biodiv/d210229.
- Nahdi MS, Kurniawan AP. 2019. Ethnobotanical study of medicinal plants in karst environment in Gunung Kidul, Yogyakarta, Indonesia. *Nusantara Biosci* 11 (2): 133-141. DOI: 10.13057/nusbiosci/n110204.
- Nguyen TS, Xia NH, Chu TV, Sam HV. 2019. Ethnobotanical study on medicinal plants in traditional markets of Son La Province, Vietnam. *For Soc* 3 (2): 171-192. DOI: 10.24259/fs.v3i2.6005.
- Nisa U, Astana PR, Triyono A, Ardiyanto D, Fitriani U, Zulkaini Z, Novianto F, Jannah WV. 2021. Ethnobotanical study of medicinal plants used for treating urinary tract problems in eastern Indonesia. *IOP Conf. Ser.: Earth Environ. Sci* Vol 905 012119.
- Oladel JO, Ajayi EI, Oyeleke OM, Oladele OT, Olowookere BD, Adeniyi BM, Oyewole OI, Oladiji AT. 2020. A systematic review on COVID-19 pandemic with soecial emphasis on curative potentials of Nigeria based medicinal plants. *Heliyon* 6 (9): e04897. DOI: 10.1016/j.heliyon.2020.e04897.
- Pandiangan D, Silalahi M, Dapas F, Kandau F. 2019. Diversity of medicinal plants and their uses by the Sanger Tribe of Sangihe Islands, North Sulawesi, Indonesia. *Biodiversitas* 20 (3): 611-621. DOI: 10.13057/biodiv/d200301.
- Panyod S, Ho CT, Sheen LY. 2020. Dietary therapy and herbal medicine for COVID-19 prevention: A review and perspective. *J Tradit Complement Med* 10: 420-427.
- Penecilla GL, Magno CP. 2011. Antibacterial activity of extracts of twelve common medicinal plants from the Philippines. *J Med Plants Res* 5 (16): 3975-3981. DOI: 10.5897/JMPR/.
- Pérez-Nicolás M, Vibrans H, Manzanares AR, Saynes-Vasquez A, Luna-Cavazos M, Flores-Críz M, Lira-Saade R. 2017. Patterns of knowledge and use of medicinal plants in Santiago Camotlan, Oaxaca, Mexico. *Econ Bot* 71: 209-223. DOI: 10.1007/s12231-017-9384-0.
- Phumthum M, Nguanchoo V, Balsev H. 2021. Medicinal plants used for treating mild Covid-19 symptoms among Thai Karen and Hmong. *Front Pharmacol* 12: 699897. DOI: 10.3389/fphar.2021.699897.
- Puspitaningtyas DM. 2017. Orchid inventory in Bantimurung Bulusaraung National Park, South Sulawesi, Indonesia. *Biodiversitas* 18 (1): 341-350. DOI: 10.13057/biodiv/d180144.
- Rahayu YYS, Araki T, Rosleine D. 2020. Factors affecting the use of herbal medicines in universal health coverage system in Indonesia. *J Ethnopharmacol* 260: 112974. DOI: 10.1016/j.jep.2020.112974.
- Rastogi S, Pandey DN, Singh RH. 2022. COVID-19 pandemic: A pragmatic plan for Ayurveda intervention. *J Ayurveda Integr Med* 13(1): 100312. DOI: 10.1016/j.jaim.2020.04.002.
- Siburian R. 2010. Pengelolaan Taman Nasional Bantimurung-Bulusaraung dan dampaknya terhadap masyarakat lokal. *Jurnal Masyarakat dan Budaya* 12 (1): 119-144. [Indonesian]
- Silalahi M, Supriatna J, Walujo EB, Nisyawati. 2015. Local knowledge of medicinal plants in sub-ethnic Batak Simalungun of North Sumatra, Indonesia. *Biodiversitas* 16 (1): 44-54. DOI: 10.13057/biodiv/d160106.
- Syamsiah SFH, Mu'nisa A, Jumadi O. 2016. Study on medicinal plants used by Ethnic Mamuju in West Sulawesi. *J Trop Crop Sci* 3 (2): 42-48. DOI: 10.29244/jtcs.3.2.43-48.
- Vellingiri B, Jayaramayya K, Iyer M, Narayanasamy A, Govindasamy V, Giridharan B, Ganesan S, Venugopal A, et al. 2020. COVID-19: A promising cure for the global panic. *Sci Total Environ* 10 (725): 138277. DOI: 10.1016/j.scitotenv.2020.138277.
- Vieira DS, Oliveira FT, Garcia SJA, Silva DP, Bernardo THL, Bastos MLA. 2021. Biological activities: anti-infectious, antioxidant and healing of the vegetable species *Jatropha multifida*. *Ref Bras Enferm* 74 (2): 1-9. DOI: 10.1590/0034-7167-2020-0451.
- Wayland C, Walker LS. 2014. Length of residence, age and patterns of medicinal plant knowledge and use among women in the urban Amazon. *J Ethnobiol Ethnomed* 10 (1): 25. DOI: 10.1186/1746-4269-10-25.
- Wiryono, Wanandi Y, Ilahi AK, Deselina, Senoaji G, Siswahyono. 2019. The local knowledge of the plant names and uses by Semende tribe people in Kaur District, Bengkulu Province, Indonesia. *Biodiversitas* 20 (3): 754-761. DOI: 10.13057/biodiv/d200320.
- Xavier-Santos JB, Félix-Silva J, Passos JGR, Gomes JAS, Fernandes JM, Garcia VB, de Araujo-Junior RF, Zucolotto SM, Silva-Junior AA, Fernandes-Pedrosa MF. 2018. Development of an effective and safe topical anti-inflammatory gel containing *Jatropha gossypifolia* leaf extract: Results from a pre-clinical trial in mice. *J Ethnopharmacol* 227: 268-278. DOI: 10.1016/j.jep.2018.09.007.
- Yuan H, Ma Q, Ye L, Piau G. 2016. The Traditional Medicine and Modern Medicine from Natural Products. *Molecules* 21(5):559. DOI:10.3390/molecules21050559.
- Yudharaj P, Shankar M, Sowjanya R, Sireesha B. 2016. Importance and Use of Medicinal Plants-An overview. *Intl J Preclinical Pharm Res* 7 (2): 67-73.
- Zenderland JRH, Rainer WB, Narel YPZ, Shalva S, Zaal K, David K, David T, Manana K, Ketevan B. 2019. The use of "Use Value": Quantifying importance in ethnobotany. *Econ Bot* 73: 293-303. DOI: 10.1007/s12231-019-09480-1.
- Zikri M, Sumartono E, Novanda RR, Parwito, Purnomo A, Busro, Supriyono. 2018. Ethnobotany of medical plants by Rejang Selupu Ethnic. *J Phys: Conf* 1114: 012130. DOI: 10.1088/1742-6596/1114/1/012130.

ORIGINALITY REPORT

---

14%

SIMILARITY INDEX

8%

INTERNET SOURCES

12%

PUBLICATIONS

1%

STUDENT PAPERS

---

PRIMARY SOURCES

---

- |   |                                                                                                                                                                                                                                                     |    |
|---|-----------------------------------------------------------------------------------------------------------------------------------------------------------------------------------------------------------------------------------------------------|----|
| 1 | "Environmental Challenges and Medicinal Plants", Springer Science and Business Media LLC, 2022<br>Publication                                                                                                                                       | 1% |
| 2 | <a href="http://www.frontiersin.org">www.frontiersin.org</a><br>Internet Source                                                                                                                                                                     | 1% |
| 3 | <a href="http://www.wattpad.com">www.wattpad.com</a><br>Internet Source                                                                                                                                                                             | 1% |
| 4 | Noureddine Chaachouay, Allal Douira, Lahcen Zidane. "Herbal Medicine Used in the Treatment of Human Diseases in the Rif, Northern Morocco", Arabian Journal for Science and Engineering, 2021<br>Publication                                        | 1% |
| 5 | Mushtaq Ahmad, Muhammad Zafar, Nuzba Shahzadi, Ghulam Yaseen, Terence M. Murphey, Shazia Sultana. "Ethnobotanical importance of medicinal plants traded in Herbal markets of Rawalpindi- Pakistan", Journal of Herbal Medicine, 2017<br>Publication | 1% |
-

6	<a href="http://www.ftz.czu.cz">www.ftz.czu.cz</a> Internet Source	1 %
7	<a href="http://dokumen.pub">dokumen.pub</a> Internet Source	<1 %
8	"Ethnobiology of Mountain Communities in Asia", Springer Science and Business Media LLC, 2021 Publication	<1 %
9	Lorraine S. Cordeiro, Timothy Johns, Jerusha Nelson-Peterman, Lindiwe Sibeko. "Anti-Infective Plants Used for Lactation and Postpartum Recovery: Exploration of a Sub-Saharan–North African Dichotomy", American Chemical Society (ACS), 2020 Publication	<1 %
10	"Biodiversity, Conservation and Sustainability in Asia", Springer Science and Business Media LLC, 2022 Publication	<1 %
11	<a href="http://tkdlph.com">tkdlph.com</a> Internet Source	<1 %
12	Submitted to Caleb University Student Paper	<1 %
13	<a href="http://www.researchsquare.com">www.researchsquare.com</a> Internet Source	<1 %

14 Endang Purba, Nisyawati -, Marina Silalahi. "The ethnomedicine of the Batak Karo people of Merdeka sub-district, North Sumatra, Indonesia", International Journal of Biological Research, 2016  
Publication

---

15 Kavitha Vijayaraghavan, Johanna Rajkumar, Syed Nasir Abbas Bukhari, Badr Al-Sayed, Mohammed Ali Seyed. "Chromolaena odorata: A neglected weed with a wide spectrum of pharmacological activities", Molecular Medicine Reports, 2017  
Publication

---

16 Nouredine Chaachouay, Abdelhamid Azeroual, Bouchaib Bencharki, Allal Douira, Lahcen Zidane. "Ethnoveterinary medicines plants for animal therapy in the Rif, North of Morocco.", South African Journal of Botany, 2022  
Publication

---

17 [jppres.com](http://jppres.com)  
Internet Source

---

18 [nopr.niscpr.res.in](http://nopr.niscpr.res.in)  
Internet Source

---

19 Marina Silalahi. "Diversity of medicinal plants in homegardens in Tanjung Julu village, North

# Sumatra, Indonesia", International Journal of Biological Research, 2016

Publication

20

Mudasir Nazir Bhat, Bikarma Singh, Opende Surmal, Bishander Singh, Vijay Shivgotra, Carmelo Maria Musarella. "Ethnobotany of the Himalayas: Safeguarding Medical Practices and Traditional Uses of Kashmir Regions", Biology, 2021

Publication

<1 %

21

[etd.aau.edu.et](http://etd.aau.edu.et)

Internet Source

<1 %

22

[j-tropical-crops.com](http://j-tropical-crops.com)

Internet Source

<1 %

23

Submitted to University of Zululand

Student Paper

<1 %

24

[academicjournals.org](http://academicjournals.org)

Internet Source

<1 %

25

[mdpi-res.com](http://mdpi-res.com)

Internet Source

<1 %

26

Andrade-Cetto, Adolfo, and Michael Heinrich. "From the Field into the Lab: Useful Approaches to Selecting Species Based on Local Knowledge", Frontiers in Pharmacology, 2011.

Publication

<1 %

27

Seyid Ahmet Sargin, Selami Selvi, Mustafa Büyükcengiz. "Ethnomedicinal plants of Aydincik District of Mersin, Turkey", Journal of Ethnopharmacology, 2015

Publication

&lt;1 %

28

Suroowan, Shanoo, and Fawzi Mahomoodally. "Complementary and alternative medicine use among Mauritian women", Complementary Therapies in Clinical Practice, 2013.

Publication

&lt;1 %

29

Magaly Villena-Tejada, Ingrid Vera-Ferchau, Anahi Cardona-Rivero, Rina Zamalloa-Cornejo et al. "Use of medicinal plants for COVID-19 prevention and respiratory symptom treatment during the pandemic in Cusco, Peru: A cross-sectional survey", Cold Spring Harbor Laboratory, 2021

Publication

&lt;1 %

30

Thamina Acter, Nizam Uddin, Jagotamoy Das, Afroza Akhter, Tasrina Rabia Choudhury, Sunghwan Kim. "Evolution of severe acute respiratory syndrome coronavirus 2 (SARS-CoV-2) as coronavirus disease 2019 (COVID-19) pandemic: A global health emergency", Science of The Total Environment, 2020

Publication

&lt;1 %

31

Internet Source

&lt;1 %

32

[nick-simon.icu](https://www.nick-simon.icu/)

Internet Source

&lt;1 %

33

Naoufal El Hachlafi, Nesrine Benkhaira, Mohamed Ferioun, Fahd Kandsi et al.  
"Moroccan Medicinal Plants Used to Treat Cancer: Ethnomedicinal Study and Insights into Pharmacological Evidence", Evidence-Based Complementary and Alternative Medicine, 2022

Publication

&lt;1 %

34

[worldwidescience.org](https://www.worldwidescience.org/)

Internet Source

&lt;1 %

35

Fatiha Brahmi, Yassmina Iblhoulen, Hanane Issaadi, Mahmoud Fahmi Elsebai, Khodir Madani, Lila Boulekbache-Makhlouf.  
"Ethnobotanical survey of medicinal plants of bejaia localities from algeria to prevent and treat coronavirus (COVID-19) infection shortened title: phytomedicine to manage COVID-19 pandemic", Advances in Traditional Medicine, 2022

Publication

&lt;1 %

36

Tabuti, J.. "Traditional herbal drugs of Bulamogi, Uganda: plants, use and

&lt;1 %

administration", Journal of  
Ethnopharmacology, 200309

Publication

37

[pt.scribd.com](https://pt.scribd.com)

Internet Source

<1 %

38

[smujo.id](https://smujo.id)

Internet Source

<1 %

39

[www.researchgate.net](https://www.researchgate.net)

Internet Source

<1 %

40

"Plant and Human Health, Volume 2",  
Springer Science and Business Media LLC,  
2019

Publication

<1 %

41

A A Andriyani, R Nugraha, S N Marlina.  
"Distribution and characteristics of the  
Makassar tarsius Tarsius fuscus fischer, 1804  
sleeping nest in the tropical primary and  
secondary forests of South Sulawesi", IOP  
Conference Series: Earth and Environmental  
Science, 2021

Publication

<1 %

42

Bosele Israel Moichwanetse, Peter Tshepiso  
Ndhlovu, George Sedupane, Adeyemi  
Oladapo Aremu. "Ethno-veterinary plants  
used for the treatment of retained placenta  
and associated diseases in cattle among  
Dinokana communities, North West Province,

<1 %

South Africa", South African Journal of Botany,  
2020

Publication

---

43

Irfan Ullah, Ihsan Ullah, Maroof Ali, Faran Durrani et al. "Quantitative study of medicinal plants and biological activities of two common species used by inhabitants of district Bannu, Pakistan", Acta Ecologica Sinica, 2021

Publication

---

44

Jahid Siraz Chowdhury, Haris Abd Wahab, Rashid M. Saad, Parimal Roy. "chapter 2 "Ihsanic" Philosophy as an Alternative to Social Justice", IGI Global, 2022

Publication

---

45

Marina Silalahi, Nisyawati. "An ethnobotanical study of traditional steam-bathing by the Batak people of North Sumatra, Indonesia", Pacific Conservation Biology, 2019

Publication

---

46

Sakina Mussarat, Rahila Amber, Akash Tariq, Muhammad Adnan, Naser M. AbdElsalam, Riaz Ullah, Roqaia Bibi.

"Ethnopharmacological Assessment of Medicinal Plants Used against Livestock Infections by the People Living around Indus River", BioMed Research International, 2014

Publication

---

<1 %

<1 %

<1 %

<1 %

47	Shah, Payal, and Kathy Baylis. "Evaluating Heterogeneous Conservation Effects of Forest Protection in Indonesia", PLoS ONE, 2015. Publication	<1 %
48	<a href="http://discoveryjournals.org">discoveryjournals.org</a> Internet Source	<1 %
49	<a href="http://downloads.hindawi.com">downloads.hindawi.com</a> Internet Source	<1 %
50	<a href="http://ethnobiomed.biomedcentral.com">ethnobiomed.biomedcentral.com</a> Internet Source	<1 %
51	<a href="http://medcraveonline.com">medcraveonline.com</a> Internet Source	<1 %
52	<a href="http://researchspace.ukzn.ac.za">researchspace.ukzn.ac.za</a> Internet Source	<1 %
53	<a href="http://s-space.snu.ac.kr">s-space.snu.ac.kr</a> Internet Source	<1 %
54	D Inayah, T Artaka, E Arisoesilaningih. "Mapping divers terrestrial orchids grown in the orchids garden of the Ranu Darungan Resort, the Bromo Tengger Semeru National Park", IOP Conference Series: Earth and Environmental Science, 2021 Publication	<1 %
55	Prabin Bhandari, Min Bahadur Gurung, Chandra Kanta Subedi, Ram Prasad Chaudhary et al. "Traditional use of medicinal	<1 %

plants in the Chyangthapu-Phalaicha biological sub-corridor, Panchthar District, Kangchenjunga Landscape, Nepal", Research Square, 2020

Publication

---

56

Subramanyam Ragupathy. "Consensus of the 'Malasars' traditional aboriginal knowledge of medicinal plants in the Velliangiri holy hills, India", Journal of Ethnobiology and Ethnomedicine, 2008

Publication

---

57

"Medicinal Herbs and Fungi", Springer Science and Business Media LLC, 2021

Publication

---

58

Jorge Mario Vargas, Adolfo Andrade-Cetto. "Ethnopharmacological Field Study of Three Q'eqchi Communities in Guatemala", Frontiers in Pharmacology, 2018

Publication

---

59

Nazim Hassan, Muhammad Shuaib, Yu Zhu, Ying Chen, Mohammad Nisar, Ajmal Iqbal, Saraj Bahadur, Muhammad Romman, Naila Azam. "Quantitative analysis of medicinal plants consumption in the highest mountainous region of Bahrain valley northern, Pakistan", Acta Ecologica Sinica, 2020

Publication

---

<1 %

<1 %

<1 %

<1 %

60

S. PALABAŞ UZUN, R. ŞİMŞİR BOZDAĞ.  
"ETHNOBOTANICAL STUDY ON TRADED  
MEDICINAL PLANTS AND HERBAL MARKET  
ANALYSES IN GAZIANTEP/TURKEY", Applied  
Ecology and Environmental Research, 2022  
Publication

---

<1 %

---

Exclude quotes On

Exclude matches < 5 words

Exclude bibliography On