

Prediction of Potential Fishing Zones for Skipjack Tuna During the Northwest Monsoon Using Remotely Sensed Satellite Data

by . .

Submission date: 20-Apr-2022 10:43PM (UTC-0700)

Submission ID: 1816125621

File name: IJMS-2017.pdf (665.69K)

Word count: 3101

Character count: 16679

Prediction of Potential Fishing Zones for Skipjack Tuna During the Northwest Monsoon Using Remotely Sensed Satellite Data

Mukti Zainuddin^{1*}, Safruddin¹, Muhammad Banda Selamat¹, Aisjah Farhum¹ and Sarip Hidayat²

¹Faculty of Marine Science and Fisheries, Hasanuddin University
Jl. Perintis Kemerdekaan km 10 Tamalanrea, Makassar 90245, Indonesia
²Indonesian National Institute of Aeronautics and Space (LAPAN) Parepare
Jl. Jend. A. Yani KM. 6, Kota Parepare, 91112 Indonesia
Email: mukti_fishocean@yahoo.co.id

Abstract

One of economically important fish in the Bay of Bone is Skipjack tuna which their distribution and migration are influenced by surrounding environment. This study aims to investigate the relationship between skipjack tuna and their environments, and to predict potential fishing zones (PFZs) for the fish in the Bone Bay-Flores Sea using satellite-based oceanography and catch data. Generalized additive models (GAMs) were used to assess the relationship. A generalized linear model (GLM) constructed from GAMs was used for prediction. Monthly mean sea surface temperature (SST) and chlorophyll-a during the northwest monsoon (December-January) together with catch data were used for the year 2012-2013. We used the GAMs to assess the effect of the environment variables on skipjack tuna CPUE (catch per unit effort). The best GLM was selected to predict skipjack tuna abundance. Results indicated that the highest CPUEs (fish/trip) occurred in areas where SST and chlorophyll-a ranged from 29.5°-31.5°C and 0.15 - 0.25 mg m⁻³, respectively. The PFZs for skipjack were closely related to the spatial distribution of the optimum oceanographic conditions and these mainly developed in three locations, northern area of Bone Bay in December, in the middle area of the bay (4°-5.5°S and 120.5°-121.5°E) during January and moved to the Flores Sea in February. The movement of skipjack concentration was consistent with the fishery data. This suggests that the dynamics of the optimum oceanographic signatures provided a good indicator for predicting feeding grounds as hotspot areas for skipjack tuna in Bone Bay-Flores Sea during northwest monsoon.

Keywords: skipjack tuna, potential fishing zones, satellite based-oceanographic data, Northwest monsoon

Introduction

The Bone Bay- Flores Sea located in the central Indonesian Seas is one of the most biologically productive areas in the tropical region (Figure 1.). This area is also one of the main pathways the Indonesian Through Flow (ITF) and is strongly influenced by the Asian monsoon i.e. southeast monsoon and northwest monsoon (Gordon, 2005). The study area is also well known as one of the most productive skipjack tuna fishing grounds in Indonesian waters (Mallawa, 2009).

Skipjack tuna is the most important species targeting by fishermen in the Bay of Bone, South Sulawesi. The distribution and migration of this species are strongly influenced by oceanographic factors such as distributions of SST and chlorophyll-a (hereafter Chl-a) concentration (Zainuddin, 2011a,b). Sea surface temperature (SST) can influence the geographical range of marine species, the observed association of albacore with ocean thermal structures cannot be explained by

temperature per se, but involve also other behavioral mechanisms linked with feeding activity (Zainuddin et al., 2008). In respect to tuna ecology, SST is an important variable for thermoregulation process and physiological adaptation for tuna, while Chl-a concentration is an important indicator for tuna forage habitat (Polovina et al., 2017). The physical oceanographic parameter is one of important oceanographic parameters to study skipjack tuna habitat in tropical region. Skipjack migration route and habitat in the Bone Bay corresponds to the movement of optimum range SST (Zainuddin et al., 2013).

A combined satellite remote sensing (SRS) and geographic information system (GIS) provides a powerful tool to characterize potentially marine fish habitats particularly for highly migratory tuna (Mugo et al., 2010). SST and Chl-a derived from satellite data are determinant factors in predicting tuna forage and their habitat in Western North Pacific Ocean (Polovina et al., 2001; Zainuddin et al., 2008). Temperature preferences for skipjack in

^{*}) Corresponding author
© Ilmu Kelautan, UNDIP

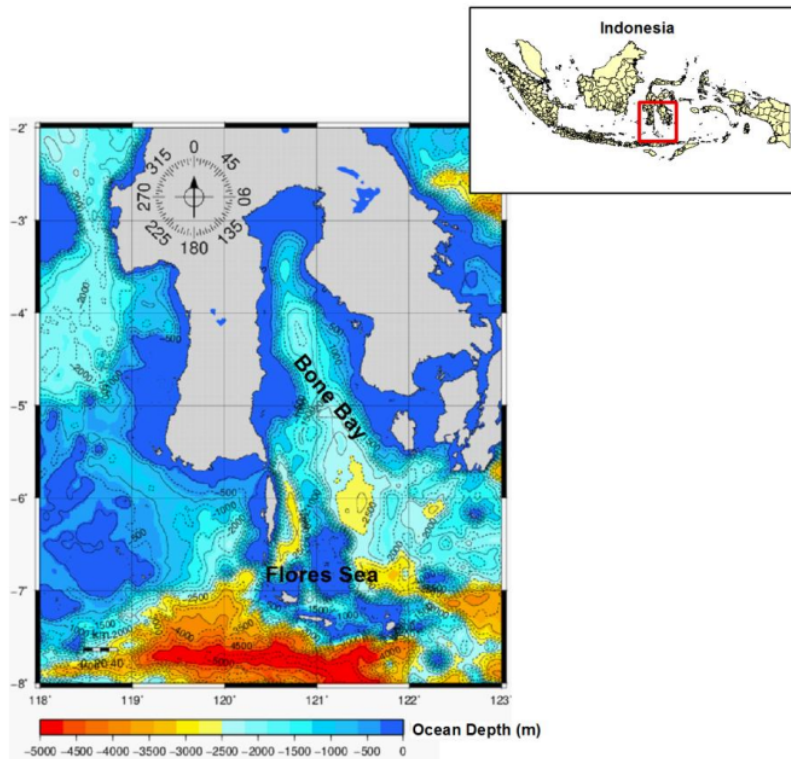


Figure 1. Location map of the area investigated in Bone Bay-Flores Sea within Indonesian Waters

western North Pacific and the southwest Atlantic (Brazilian waters) range from 20.5 to 26 °C and from 22 to 26.5 °C (Andrade and Garcia, 1999; Mugo *et al.*, 2010). Off coast of Japan, the Chl-a associates with skipjack in areas of oligotrophic waters (surface Chl-a 0.08–0.18, 0.22–0.27 and 0.3–0.37 mg.m⁻³) (Mugo *et al.*, 2010). Our previous study indicates that skipjack tuna during the south-east monsoon associates well with preferred SST and chlorophyll-a concentration (Zainuddin *et al.*, 2013). An investigation of the potential fishing zone for skipjack tuna during the north-west monsoon is still unclear. Therefore, the objectives of this study are to explore the relationship between oceanographic factors and skipjack tuna abundance, to predict the potential fishing zones the north-west monsoon.

Materials and Methods

Pole and line fishery data

The pole and line fishery, extending from the Bone bay to Flores Sea, catches skipjack tuna during year round. Our database indicates that

geographical distributions of skipjack in the Bone Bay to Flores Sea by latitude mainly locate about 3-8°S and the high skipjack abundance occurs in southeast monsoon (Zainuddin *et al.*, 2013). In this study we compiled from daily into monthly fishery data during northwest monsoon (December-February). The catch data, including skipjack catch numbers per unit effort (CPUE) and fishing position were geo-referenced with high resolution of both longitude and latitude. One trip in the fishing operation usually consisted of 2-4 fishing sets (hauling). Therefore, the unit of fishing efforts in this study used the fishing set to improve the accuracy (minimizing deviation standard in effort). We obtained these data by following fishing operations during the period.

Satellite remote sensing data

The physical and biological environmental data used to describe the oceanographic condition around the fishing locations are surface chlorophyll-a concentration and sea surface temperature (SST). These data have the same spatial and temporal resolution.

²¹ Aqua/MODIS (Moderate Resolution Imaging Spectroradiometer) level 3 standard mapped images were used to estimate sea surface Chl-a concentration. These data were obtained from NASA GSFC's Distributed Active Archive Center (DAAC) (<http://oceancolor.gsfc.nasa.gov/>). We used Global Area Coverage (GAC), monthly composite MODIS images with a spatial resolution of about 4 x 4 km for the period from December 2012 to February 2013.

²⁵ In this study, Aqua/MODIS sea surface temperature (SST) was used to estimate temperature along the study area. The NASA distributes Standard Mapped Image (SMI) SST level 3 binary data with HDF (Hierarchical Data Format) format. This study used the satellite data with monthly temporal resolution during December 2012 to February 2013, at 0.044° of longitude and latitude spatial resolution. Data were processed using IDL (Interactive Data Language) software package to get image data throughout the area.

¹¹ **Prediction of potential fishing zones**

To predict spatial patterns of potential fishing zone for skipjack tuna, statistical models were applied. These models were built by combining generalized additive model (GAM) and linear model/generalized linear model (GLM). This study constructed the linear model based on the nature of the relationship between skipjack CPUE as the response variable and SST and Chl-a as predictor variables resulting from a GAM with the least different of residual deviance (Zainuddin et al., 2008). Despite the GAM may explain variance of CPUE more effective and flexible than the linear model (GLM), the model has no analytical form (Mathsoft, 2000). A linear model provides a way of estimating a function of mean response (CPUE) as a linear function of some set of covariates. Therefore, this study used the GLM fit to predict a spatial pattern of skipjack CPUE. The first step to get the spatial predictive model was to construct GAM as an exploratory tool. This step was used to identify the shapes of the relationships between environmental factors and skipjack CPUE as it was most likely that the expected relationships are non-linear. The second, once the shape of the relationships between the skipjack CPUE and each predictor (SST and Chl-a) were identified, the appropriate functions were used to parameterize these shapes in the linear model (Zainuddin et al., 2008;2013). The shapes resulting from the GAM were reproduced as closely as possible using the piecewise linear model. Statistical Models of the GAM and the linear model respectively:

$$\log(cpue+1) = \alpha + s(SST) + s(Chl - a) + \epsilon$$

$$\log(cpue+1) = \beta_0 + \beta_1(SST) + \beta_2(Chl - a) + \epsilon$$

⁶ where α and β_0 are constant, $s(.)$ is a spline smooth function of the predictor variables (SST and Chl-a) and ϵ is a random error term, β_1 and β_2 is the vector of model coefficients. The constant intercept terms were computed using `gam` and `glm` functions in R Language. All statistical analyses were carried out using R Language version 3.1.2.

Results and Discussion

SST was highest in December and the relatively lower SSTs were more apparent in January when the skipjack tuna were widely distributed along the Bone Bay (Figure 2.). During northwest monsoon (December-February), the fishing sets occupied areas where SST ranged from 28.5 °C to 32.5 °C and the skipjack CPUEs were found to be highest at about 30 °C (Figure 3). The highest CPUEs were obtained in December.

Figure 2 also shows that during the northwest monsoon, the fishing operations aggregated in areas of chl-a concentrations of 0.075 -0.25 mg.m⁻³. The highest CPUEs occurred in the fishing grounds of less than 0.25 mg.m⁻³. The histogram graph confirmed that the highest fishing frequency and skipjack CPUE were found at 0.2 mg.m⁻³ (Figure 3.). Fishing data CPUE are often used as an index of fish occurrence and abundance (Zainuddin et al., 2006) and therefore high CPUEs can be said to indicate preferred areas for a species (Zainuddin et al., 2008). Whilst, fishing ground chlorophyll environment relationship during northwest monsoon showed that most fishing sets have a good association with surface chlorophyll-a of 0.125–0.275 mg.m⁻³ (Figure 3). The latitudinal displacement of the fishing sets during the northwest monsoon corresponded with the spatial dynamics of relatively lower Chl-a concentration and relatively warmer SST. Figures 2 and 3 showed the highest CPUEs during the west monsoon were consistent with the movement of both optimum surface chlorophyll-a and SST. These evidences reflect that the Chl-a and SST signatures are capable of detecting potential habitats (hotspot) for tuna species such as upwelling area, frontal zone and eddy field (Zainuddin et al., 2006; Mugo et al., 2010).

¹⁹ GAM plots could be interpreted as the individual effect of each predictor variable on CPUE as a scatter plot (Figure 4:upper). Rug plots on the horizontal axis represent observed data points and

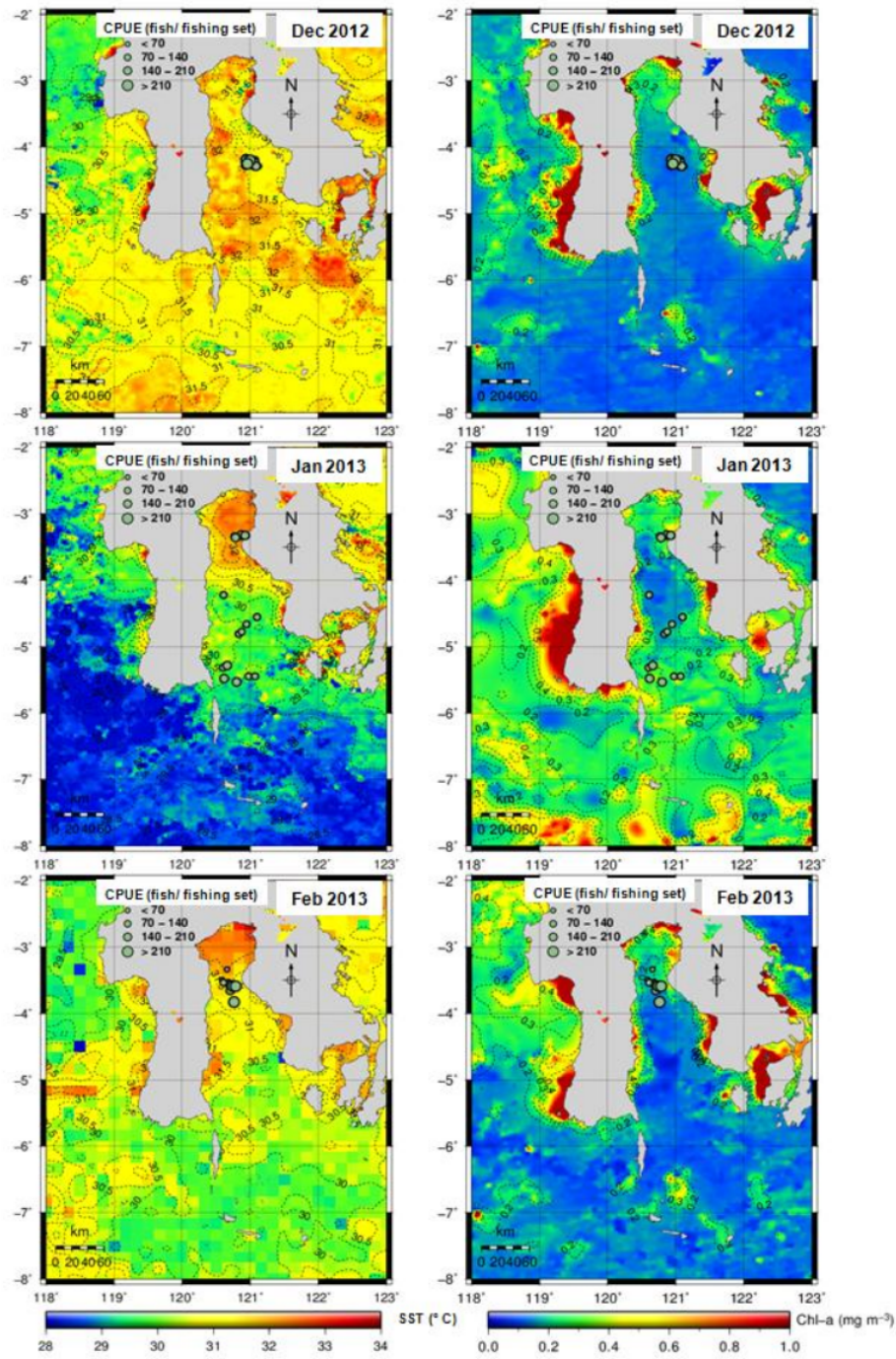


Figure 2. The spatial distribution of skipjack CPUE (fish/fishing sets) from the pole and line fishery shown as dots for December 2012- February 2013 overlain on the MODIS SST and chlorophyll concentration images

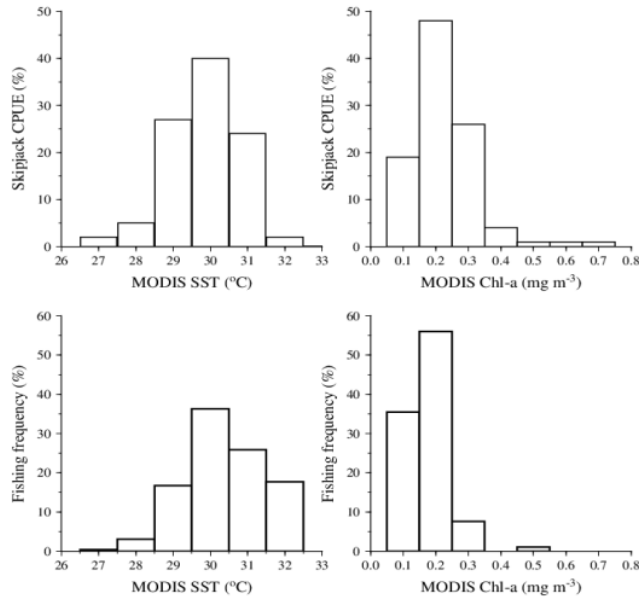


Figure 3. Histogram of skipjack CPUE (upper) and fishing frequency of skipjack fishery (lower) in relation to both SST and Chl-a.

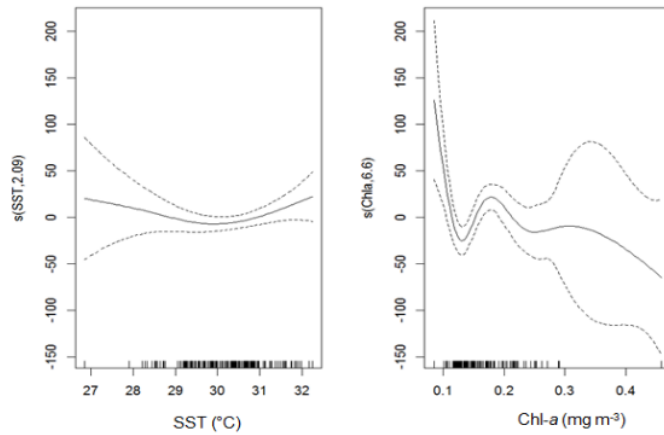


Figure 4. Generalized additive model derived effect of SST and Chl-a on nominal skipjack CPUE deviance (upper). Both independent variables are included in the GAM. Dashed lines indicate 95% confidence bands.

15

the fitted function is shown by the thick line (Figure 4). The dashed line indicates the 95% confidence bands. Both SST and Chl-a had a negative effect on skipjack CPUE. It is important to see that skipjack CPUE increases significantly with Chl-a from 0.10 to 0.20 mg.m⁻³ and SST from 30 to 31°C. Our result indicated that Chl-a is the stronger predictor than

SST. The SST and Chl-a values outside the preferred oceanographic ranges is unclear because the reduced density of fishery data points leads to larger standard error ranges (wider confidence bands).

The GAM plots (rug plots) are substantially reinforced by the histogram graphs (Figure 3.). From

this graph, distribution of Chl-a data presented more specific and sharper than that of SST. It implies that skipjack tuna are more tolerable in physiological adaptation and temperature limit in the equatorial region. It is more probable that skipjack tuna captured within study area have various sizes. The preferred SST range within the Bone Bay-Flores Seais higher than in subtropical waters (Mugo *et al.*, 2010), but it has specific in surface Chl-a range.

the northwest monsoon. The predicted CPUE for skipjack tuna present a southward displacement from December (in the middle of Bone Bay), extending to southern area in January, after which there is a highly potential fishing zones formed in Bone Bay (121°E-121.5°E and 4°S-4.5°S). The potential fishing zones developed when nutrient rich waters probably stimulating by the seasonal upwelling well enhanced. In February, relatively high skipjack CPUEs are again concentrated back to northern area of Bone Bay. A good feeding ground was well formed during this period and leads to

Figure 5 shows the spatial prediction of skipjack CPUE and the potential fishing zones during

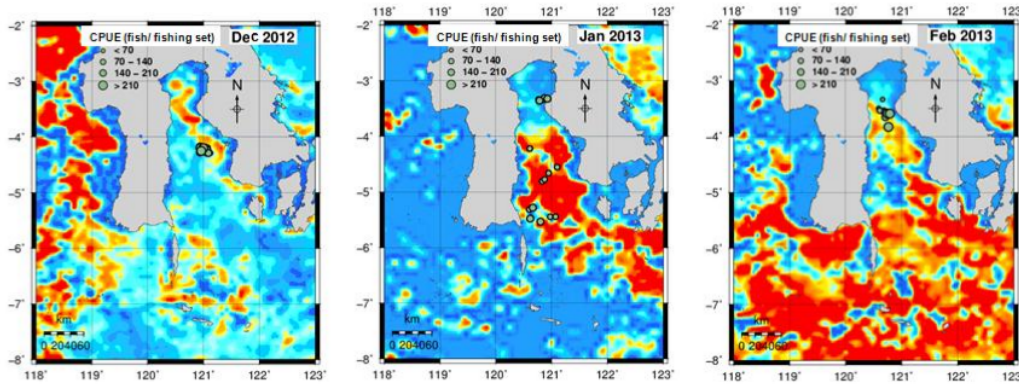


Figure 5. The spatial distribution of skipjack CPUE (fish/fishing sets) from the pole and line fishery shown as dots for December 2012-February, 2013 overlay on the predicted CPUE derived GAM –GLM (linear model).

Note. CPUE (fish/ fishing set)

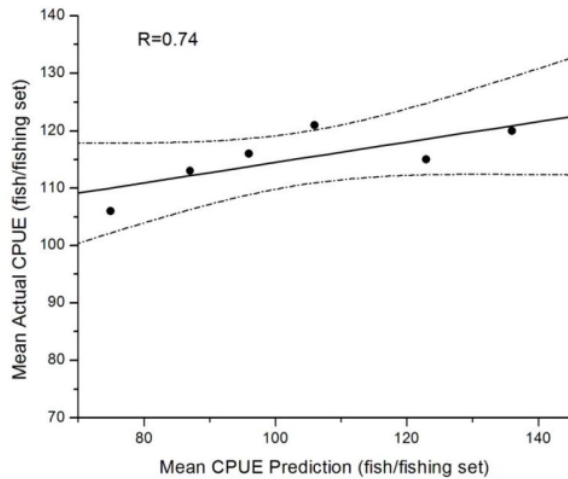


Figure 6. A scatter plot of pooled monthly observed against predicted CPUE values ($P < 0.05$, $r=0.74$). Dash lines signify 95% CL.

significantly increase CPUE particularly in December. During this month, the potential fishing zones developed and these were accessible for fishery activities where the CPUE were highest (Figure 5.). This is clearly characterized by the development of preferred oceanographic ranges (SST and Chl-a). The predicted values lie from zero to approximately 200 fish per fishing set. The predicted CPUE map indicates that skipjack CPUE was highest in December and was consistent with the fishing data overlaid on the map throughout the northwest monsoon.

The relationship between actual CPUE and predicted CPUE pooled monthly was statically significant ($P < 0.05$) (Figure 6). Predicted CPUEs show an appreciable concurrence with actual pole and line fishing locations during the northwest monsoon (2012-2013). This fact showed consistent increases in mean CPUE over the study period, suggesting that the model performed fairly well in predicting skipjack potential areas.

Conclusions

Using satellite-based oceanographic and catch data, the PFZs for skipjack were closely related to the spatial distribution of the optimum value of SST and Chl-a ranges. The potential fishing areas were predicted in three locations, northern area of Bone Bay (December), in the middle area of the bay (January) and Flores Sea in February. This suggests that the key oceanographic signatures of both SST and Chl-a provide a good indicator for predicting potential fishing grounds for skipjack tuna in Bone Bay-Flores Sea during northwest monsoon.

Acknowledgements

We are greatly indebted to Rini Sahni Putri dan Nur Indah Reskyanti for all assistances in collecting the pole and line fishery data in Bone Bay and Flores Sea. We also appreciate the use of AQUA-MODIS SST and chlorophyll-a data sets, downloaded from the ocean color portal (<http://oceancolor.gsfc.nasa.gov>). This work was partly supported to MZ. by the National Competitive Research Grant (Competence Grant-Hibah Kompetensi 2015/2016), Directorate General of Higher Education.

References

- Andrade, H.A. & Garcia, C.A.E. 1999. Skipjack tuna fishery in relation to sea surface temperature off the southern Brazilian coast. *Fisheries Oceanogr.* 8(4):245-254. doi: 10.1046/j.1365-2419.1999.00107.x.
- Mallawa, A., 2009. Pemetaan Daerah Penangkapan, Hubungan Habitat Selection dan best Fishing Ground. Bahan Ajar Program S3 Ilmu Pertanian minat Perikanan. Program Pasca Sarjana UNHAS. Tidak Dipublikasikan, pp.67.
- Mathsoft. 1999. S-Plus 2000 guide to statistics: Data Analysis Products Division, Mathsoft, Inc. Seattle, USA, pp.650.
- Mugo, R., Saitoh, S.I., Nihira, A. & Kuroyama, T. 2010. Habitat characteristics of skipjack tuna (*Katsuwonus pelamis*) in the western North Pacific: a remote sensing perspective. *Fisheries Oceanogr.* 19(5):382-396. doi: 10.1111/j.1365-2419.2010.00552.x.
- Polovina, J.J., Howell, E., Kobayashi, D.R. & Seki, M.P. 2001. The transition zone chlorophyll front, a dynamic global feature defining migration and forage habitat for marine resources. *Prog. Oceanogr.* 49(1-4):469-483. doi: 10.1016/S0079-6611(01)00036-2.
- Polovina, J.J., Howell, E.A., Kobayashi, D.R. & Seki, M.P. 2017. The Transition Zone Chlorophyll Front updated: Advances from a decade of research. *Prog. Oceanogr.* 150:79-85. doi: 10.1016/j.pocean.2015.01.006.
- Gordon, A., 2005. Oceanography of the Indonesian Seas and Their Through flow. *Oceanogr.* 18(4):14-27. doi: 10.5670/oceanogr.2005.01.
- Zainuddin, M., Kiyofuji, H., Saitoh, K. & Saitoh, S.I. 2006. Using multi-sensor satellite remote sensing and catch data to detect ocean hot spots for albacore (*Thunnus alalunga*) in the northwestern North Pacific. *Deep-Sea Research Part II: Topical Studies in Oceanography*, 53(3-4):419-431. doi:10.1016/j.dsr2.2006.01.007
- Zainuddin, M., Saitoh, K. & Saitoh, S.I. 2008. Ibacore (*Thunnus alalunga*) fishing ground in relation to oceanographic conditions in the western North Pacific Ocean using remotely sensed satellite data. *Fisheries Oceanogr.* 17(2): 61-73. doi: 10.1111/j.1365-2419.2008.00461.x
- Zainuddin, M., 2011a. Skipjack tuna in relation to sea surface temperature and Chlorophyll-A concentration of Bone Bay using remotely sensed satellite data. *Jurnal Ilmu dan Teknologi Kelautan Tropis.* 3(1): 82-90.

Zainuddin, M. 2011b. Preliminary Findings on Distribution and Abundance of Flying fish in Relation to Oceanographic Conditions of Flores Sea Observed from Multi-spectrum Satellite Images. *Asian Fisheries Sci.* 24:20-30.

Zainuddin, M., Nelwan, A., Farhum, S.A., Hajar, M.A.I. & Kurnia, M. 2013. Characterizing Potential

Fishing Zone of Skipjack Tuna during the Southeast Monsoon in the Bone Bay-Flores Sea Using Remotely Sensed Oceanographic Data. *Int. J. Geosci.* 4:259-266. doi: 10.4236/ijg.2013.41A023.

Prediction of Potential Fishing Zones for Skipjack Tuna During the Northwest Monsoon Using Remotely Sensed Satellite Data

ORIGINALITY REPORT

20%
SIMILARITY INDEX

10%
INTERNET SOURCES

16%
PUBLICATIONS

5%
STUDENT PAPERS

PRIMARY SOURCES

- 1** **123dok.com** Internet Source **2%**
- 2** **repository.unhas.ac.id** Internet Source **1%**
- 3** R Ardianto, A Setiawan, J J Hidayat, A R Zaky. "Development of an automated processing system for potential fishing zone forecast", IOP Conference Series: Earth and Environmental Science, 2017 Publication **1%**
- 4** Safruddin, B Aswar, M Rijal Ashar, R Hidayat, Y K Dewi, M. T Umar, S. A Farhum, A Mallawa, M Zainuddin. "The Fishing Ground of Large Pelagic Fish during the Southeast Monsoon in Indonesian Fisheries Management Area-713", IOP Conference Series: Earth and Environmental Science, 2019 Publication **1%**
- 5** Kuo-Wei Lan, Ming-An Lee, Chin-Pei Chou, Ali Haghi Vayghan. " Association between the **1%**

interannual variation in the oceanic environment and catch rates of bigeye tuna () in the Atlantic Ocean ", Fisheries Oceanography, 2018

Publication

6

Syazwani Mohd Yusop, Muzzneena Ahmad Mustapha, Tukimat Lihan. "Determination of spatio-temporal distribution of Rastrelliger kanagurta using modelling techniques for optimal fishing", Journal of Coastal Conservation, 2021

Publication

1 %

7

Setiawati, Martiwi Diah, Abu Bakar Sambah, Fusanori Miura, Tasuku Tanaka, and Abd. Rahman As-syakur. "Characterization of bigeye tuna habitat in the Southern Waters off Java-Bali using remote sensing data", Advances in Space Research, 2015.

Publication

1 %

8

Submitted to Universitas Diponegoro

Student Paper

1 %

9

Submitted to Universitas Hasanuddin

Student Paper

1 %

10

Safruddin, Rachmat Hidayat, Yashinta Kumala Dewi, Moh. Tauhid Omar, St. Aisjah Farhum, Achmar Mallawa, Mukti Zainuddin. "The distribution of yellowfin tuna based on sea surface temperature and water depth

1 %

parameters in the Bone Gulf, Indonesia", IOP
Conference Series: Earth and Environmental
Science, 2020

Publication

11

www.tandfonline.com

Internet Source

1 %

12

Submitted to Houston Community College

Student Paper

1 %

13

R Hidayat, M Zainuddin, S Safruddin, A
Mallawa, S A Farhum. " Skipjack Tuna () catch
in relation to the Thermal and Chlorophyll-a
Fronts during May – July in the Makassar
Strait ", IOP Conference Series: Earth and
Environmental Science, 2019

Publication

1 %

14

Submitted to National College of Ireland

Student Paper

1 %

15

Submitted to Udayana University

Student Paper

1 %

16

udspace.udel.edu

Internet Source

1 %

17

Humber Agrelli Andrade. "Skipjack tuna
fishery in relation to sea surface temperature
off the southern Brazilian coast", Fisheries
Oceanography, 12/1999

Publication

<1 %

18

nbn-resolving.org

Internet Source

<1 %

19

EVAN A. HOWELL. "El Niño effects in the Palmyra Atoll region: oceanographic changes and bigeye tuna (*Thunnus obesus*) catch rate variability", *Fisheries Oceanography*, 11/2006

Publication

<1 %

20

Takehiro Okuda, Masashi Kiyota, Shiroh Yonezaki, Chisato Murakami et al.

"Delineating the boundary and structure of higher trophic level assemblages in the western North Pacific Ocean", *Deep Sea Research Part II: Topical Studies in Oceanography*, 2017

Publication

<1 %

21

agupubs.onlinelibrary.wiley.com

Internet Source

<1 %

22

pubmed.ncbi.nlm.nih.gov

Internet Source

<1 %

23

tel.archives-ouvertes.fr

Internet Source

<1 %

24

Alabia, Irene D., Sei-Ichi Saitoh, Robinson Mugo, Hiromichi Igarashi, Yoichi Ishikawa, Norihisa Usui, Masafumi Kamachi, Toshiyuki Awaji, and Masaki Seito. "Seasonal potential fishing ground prediction of neon flying squid

<1 %

(*Ommastrephes bartramii*) in the western and central North Pacific", Fisheries Oceanography, 2015.

Publication

25

Tseng, Chen-Te, Chi-Lu Sun, Igor M. Belkin, Su-Zan Yeh, Chin-Lau Kuo, and Don-Chung Liu. "Sea surface temperature fronts affect distribution of Pacific saury (*Cololabis saira*) in the Northwestern Pacific Ocean", Deep Sea Research Part II Topical Studies in Oceanography, 2014.

Publication

<1 %

26

journal.unhas.ac.id

Internet Source

<1 %

27

journalarticle.ukm.my

Internet Source

<1 %

28

turtle.hpa.edu

Internet Source

<1 %

29

www.pcouncil.org

Internet Source

<1 %

30

Jintao Wang, Xinjun Chen, Yong Chen. "Spatio-temporal distribution of skipjack in relation to oceanographic conditions in the west-central Pacific Ocean", International Journal of Remote Sensing, 2016

Publication

<1 %

Exclude quotes On

Exclude matches < 5 words

Exclude bibliography On

Prediction of Potential Fishing Zones for Skipjack Tuna During the Northwest Monsoon Using Remotely Sensed Satellite Data

GRADEMARK REPORT

FINAL GRADE

/0

GENERAL COMMENTS

Instructor

PAGE 1

PAGE 2

PAGE 3

PAGE 4

PAGE 5

PAGE 6

PAGE 7

PAGE 8
